

Hyperion Series

300W Fresnel, PC, Profile

(ver. 2023/02)



SOURCE

- 300W LED ARRAY
- Source life expectancy: > 50.000 h
- Note: for Luminous flux and Colour rendering refer to the table at the end of this document

SOFTWARE FUNCTIONS

- ESD: 8 or 16bit extra soft dimming
- 3 selectable dimmer curves
- Adjustable delay in turning on and off
- PWM LED 500Hz-20KHz
- Amber shift (6C)
- ± Green (6C)
- Color boost (6C, RGBW, TW)
- Calibration function (6C, RGBW, TW)
- Service channel
- Stand-alone
- Master Slave
- Hour-counter on single LED
- Storage and factory recovery
- Upgradable Firmware via DMX/USB tool
- Advanced remote settings for all parameters via DMX

CONTROL

- Protocols: DMX512, RDM
- Local potentiometer
- Reversible graphics display with standby-shutdown function
- Wireless ready

	DMX Channels
WHITE	1 / 3 / 6 ch
TW	2 / 5 / 7 / 9 / 10 ch
RGBW	3 / 6 / 7 / 16 ch
6C	3 / 6 / 7 / 8 / 9 / 21 / 22 ch

THERMAL MANAGEMENT

- Wide ventilation slots for better LED cooling with selectable fan speed in: "standard", "silent" and "auto" or DMX regulated
- High efficiency heat pipe cooling system
- No heat load from LED engine towards electronic and vice-versa avoiding the risk of failure due to overheating
- Ta max 40°C

OPTICS

- 200mm High-quality glass lens optics – AR coating
- Focus: manual
- Gobo size: B (Profile)
- Compatible with fixed optics (Profile)

Note: for Beam angles refer to the table at the end of this document

PRESETS

- 45-GEL FILTER (6C, RGBW)
- CCT 2700-20000K (6C, RGBW, TW)
- 10 CUSTOM PRESETS (6C, RGBW, TW)

HOUSING

- Highly resistant body in extruded aluminum and techno-polymer body
- Finishing: Black
- IP 20

ELECTRICAL

- Power supply: 100-240 V – 50/60 Hz
- Power consumption: 300 W
- PF>0.94/230VAC PF>0.98/115VAC at full load

CONNECTION

- Power connector: Chassis PowerCON TRUE1 In/Out
- Additional cable: 2m H05RN-F cable with powerCON TRUE1 female cable connector
- DMX: XLR 5-pole In/Out panel connectors

OPTIONS

- Pole Operated Yokes
- ARC Motorized Yokes DMX 512
- Market-standard fixed optics adaptor

COMPLIANCE

- CE
- EN 60598-1; EN 60598-2-17
- SSL Licensing Program
- Manufactured in Italy with Quality System ISO 9001:2015

DIMENSIONS

FN	9.5 Kg	43*30*48 cm
PC	12.5 Kg	47*30*57 cm
PR (ZS)	15.0 Kg	47x34x76 cm
PR (ZW)	14.0 Kg	47x34x64 cm

Hyperion Series

300W Fresnel, PC, Profile

(ver. 2023/02)



DMX chart

	WHITE		
	1CH	3CH	6CH
	8 BIT	8 BIT	16 BIT
1 ch	DIMMER	DIMMER	DIMMER
2 ch		STROBO	DIMMER FINE
3 ch		SERVICE	DELAY
4 ch			FAN
5 ch			STROBE
6 ch			SERVICE
7 ch			
8 ch			
9 ch			
10 ch			

	TUNABLE WHITE				
	EASY	SPLIT	SPLIT	STUDIO	THEATRE FULL
	8 BIT	8 BIT	16 BIT	16 BIT	16 BIT
DIMMER	DIMMER	DIMMER	DIMMER	DIMMER	DIMMER
CCT	WW	DIMMER FINE	DIMMER FINE	DIMMER FINE	DIMMER FINE
	CW	WW	CCT	CCT	CCT
	STROBO	WW FINE	WW +/-	DELAY	DELAY
	SERVICE	CW	CW +/-	FAN	FAN
		CW FINE	DELAY	STROBO	STROBO
		DELAY	FAN	SERVICE	SERVICE
		FAN	STROBO		
		STROBO	SERVICE		
		SERVICE			

	RGBW				
	EASY	HSI	CMY	RGBW	FULL
	8 BIT	8 BIT	8 BIT	8 BIT	16 BIT
1 ch	DIMMER	DIMMER	DIMMER	DIMMER	DIMMER
2 ch	COLOUR PRESET	HUE	CYAN	RED	DIMMER FINE
3 ch	CCT	HUE FINE	MAGENTA	GREEN	RED
4 ch		SATURATION	YELLOW	BLUE	RED FINE
5 ch		STROBO	STROBO	WHITE	GREEN
6 ch		SERVICE	SERVICE	STROBO	GREEN FINE
7 ch				SERVICE	BLUE
8 ch					BLUE FINE
9 ch					WHITE
10 ch					WHITE FINE
11 ch					CCT
12 ch					COLOUR PRESET
13 ch					DELAY
14 ch					FAN
15 ch					STROBO
16 ch					SERVICE

	RGBACL						
	EASY	CMY	RGB	HSIC	RGBACL	THEATER	STUDIO
	8 BIT	8 BIT	8 BIT	8 BIT	8 BIT	16 BIT	16 BIT
1 ch	DIMMER	DIMMER	DIMMER	DIMMER	DIMMER	DIMMER	DIMMER
2 ch	COLOUR PRESET	CYAN	RED	HUE	RED	DIMMER FINE	DIMMER FINE
3 ch	CCT	MAGENTA	GREEN	HUE FINE	GREEN	RED	RED
4 ch		YELLOW	BLUE	SATURATION	BLUE	RED FINE	RED FINE
5 ch		STROBO	STROBO	CCT	AMBER	GREEN	GREEN
6 ch		SERVICE	SERVICE	STROBO	CYAN	GREEN FINE	GREEN FINE
7 ch				SERVICE	LIME	BLUE	BLUE
8 ch					STROBO	BLUE FINE	BLUE FINE
9 ch					SERVICE	AMBER	AMBER
10 ch						AMBER FINE	AMBER FINE
11 ch						CYAN	CYAN
12 ch						CYAN FINE	CYAN FINE
13 ch						LIME	LIME
14 ch						LIME FINE	LIME FINE
15 ch						COLOUR PRESET	COLOUR PRESET
16 ch						SATURATION	CCT
17 ch						CCT	+/- GREEN
18 ch						+/- GREEN	DELAY
19 ch						DELAY	FAN
20 ch						FAN	STROBO
21 ch						STROBO	SERVICE
22 ch						SERVICE	

Hyperion Series

300W Fresnel, PC, Profile

(ver. 2023/02)



Model	Type	CT	(measure at)	CRI	TLCI	TM-30	Lumen	Beam	Lux	Ø Beam	Lux	Ø Beam	Lux	Ø Beam	Lux	Ø Beam	Lux	Ø Beam	Peak CD
FN HY LED 300	WW	3200K	3200K	97	97	93	8.591	9°	12.984	0,6	5.771	0,9	3.246	1,3	2.077	1,6	1.443	1,9	207.740
								45°	1.220	3,3	542	4,9	305	6,6	195	8,2	136	9,9	19.516
	CW	5600K	5600K	95	92	93	10.107	9°	15.275	0,6	6.789	0,9	3.819	1,3	2.444	1,6	1.697	1,9	244.400
								45°	1.435	3,3	638	4,9	359	6,6	230	8,2	159	9,9	22.960
	TW	2700-6500K	5600K	95	92	93	9.096	9°	13.748	0,6	6.110	0,9	3.437	1,3	2.200	1,6	1.528	1,9	219.960
								45°	1.292	3,3	574	4,9	323	6,6	207	8,2	144	9,9	20.664
	RGBW	2700-8000K	Full Ch	85	90	90	8.666	12°	9.400	0,8	4.178	1,3	2.350	1,7	1.504	2,1	1.044	2,5	150.400
								45°	1.083	3,3	481	4,9	271	6,6	173	8,2	120	9,9	17.320
	6C	1500-20000K	Full Ch	97	92	94	7.486	12°	8.725	0,8	3.878	1,3	2.181	1,7	1.396	2,1	969	2,5	139.600
								45°	923	3,3	410	4,9	231	6,6	148	8,2	103	9,9	14.760
									4 m		6 m		8 m		10 m		12 m		

Model	Type	CT	(measure at)	CRI	TLCI	TM-30	Lumen	Beam	Lux	Ø Beam	Lux	Ø Beam	Lux	Ø Beam	Lux	Ø Beam	Lux	Ø Beam	Peak CD
PC HY LED 300	WW	3200K	3200K	97	97	93	8.628	6°	20.650	0,4	9.178	0,6	5.163	0,8	3.304	1,0	2.294	1,2	330.400
								45°	1.248	3,3	554	4,9	312	6,6	200	8,2	139	9,9	19.960
	CW	5600K	5600K	95	92	93	10.151	6°	24.294	0,4	10.797	0,6	6.074	0,8	3.887	1,0	2.699	1,2	388.706
								45°	1.468	3,3	652	4,9	367	6,6	235	8,2	163	9,9	23.482
	TW	2700-6500K	5600K	95	92	93	10.166	6°	20.875	0,4	9.278	0,6	5.219	0,8	3.340	1,0	2.319	1,2	334.000
								45°	1.608	3,3	714	4,9	402	6,6	257	8,2	179	9,9	25.720
	RGBW	2700-8000K	Full Ch	85	90	90	6.526	8°	10.838	0,6	4.817	0,8	2.709	1,1	1.734	1,4	1.204	1,7	173.400
								45°	1.007	3,3	448	4,9	252	6,6	161	8,2	112	9,9	16.116
	6C	1500-20000K	Full Ch	97	92	94	6.398	8°	10.625	0,6	4.722	0,8	2.656	1,1	1.700	1,4	1.181	1,7	170.000
								45°	988	3,3	439	4,9	247	6,6	158	8,2	110	9,9	15.800
									4 m		6 m		8 m		10 m		12 m		

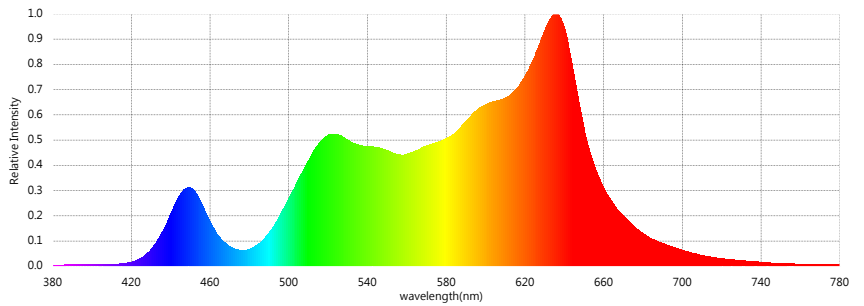
Model	Type	CT	(measure at)	CRI	TLCI	TM-30	Lumen	Beam	Lux	Ø Beam	Lux	Ø Beam	Lux	Ø Beam	Lux	Ø Beam	Lux	Ø Beam	Peak CD
PR HY LED 300 ZS	WW	3200K	3200K	95	92	93	7.036	15°	13.789	1,0	6.128	1,6	3.447	2,1	2.206	2,6	1.532	3,1	220.622
								30°	3.683	2,1	1.637	3,2	921	4,3	589	5,3	409	6,4	58.933
	CW	5600K	5600K	95	92	93	7.407	15°	16.222	1,0	7.210	1,6	4.056	2,1	2.596	2,6	1.802	3,1	259.556
								30°	4.333	2,1	1.926	3,2	1.083	4,3	693	5,3	481	6,4	69.333
	TW	2700-6500K	5600K	95	92	93	6.666	15°	14.600	1,0	6.489	1,6	3.650	2,1	2.336	2,6	1.622	3,1	233.600
								30°	3.900	2,1	1.733	3,2	975	4,3	624	5,3	433	6,4	62.400
	RGBW	2700-8000K	Full Ch	85	90	90	4.845	15°	9.614	1,0	4.273	1,6	2.403	2,1	1.538	2,6	1.068	3,1	153.816
								30°	2.601	2,1	1.156	3,2	650	4,3	416	5,3	289	6,4	41.616
	6C	1500-20000K	Full Ch	97	92	94	4.750	15°	9.425	1,0	4.189	1,6	2.356	2,1	1.508	2,6	1.047	3,1	150.800
								30°	2.550	2,1	1.133	3,2	638	4,3	408	5,3	283	6,4	40.800
PR HY LED 300 ZW	WW	3200K	3200K	95	92	93	8.724	25°	5.785	1,8	2.571	2,6	1.446	3,5	926	4,4	643	5,3	92.556
								50°	2.035	3,7	905	5,6	509	7,4	326	9,3	226	11,1	32.564
	CW	5600K	5600K	95	92	93	9.183	25°	6.806	1,8	3.025	2,6	1.701	3,5	1.089	4,4	756	5,3	108.889
								50°	2.394	3,7	1.064	5,6	599	7,4	383	9,3	266	11,1	38.311
	TW	2700-6500K	5600K	95	92	93	8.265	25°	6.125	1,8	2.722	2,6	1.531	3,5	980	4,4	681	5,3	98.000
								50°	2.155	3,7	958	5,6	539	7,4	345	9,3	239	11,1	34.480
	RGBW	2700-8000K	Full Ch	85	90	90	5.564	25°	4.055	1,8	1.802	2,6	1.014	3,5	649	4,4	451	5,3	64.872
								50°	1.479	3,7	657	5,6	370	7,4	237	9,3	164	11,1	23.664
	6C	1500-20000K	Full Ch	97	92	94	5.455	25°	3.975	1,8	1.767	2,6	994	3,5	636	4,4	442	5,3	63.600
								50°	1.450	3,7	644	5,6	363	7,4	232	9,3	161	11,1	23.200
									4 m		6 m		8 m		10 m		12 m		

Product information and test conditions

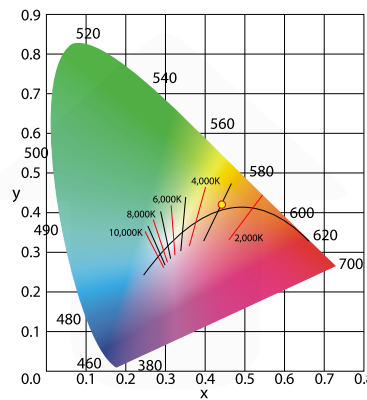
Name	PC HY LED 300 6C - 3000K		
Time	2021-02-08 23:46:56(Time-zone GMT+8)		
Manufacturer	Spotlight		
User	Spotlight (palup@spotlight.it)		
Temperature(°C)	17	Humidity(%)	60
		Distance(m)	

Parameters	
CIE_x	0.4421
CIE_y	0.4203
CIE_u'	0.2470
CIE_v'	0.5284
CCT	3043 K
Duv	0.0056
CRI (Ra)(R1~R8)	95
CRI (Re) (R1-R15)	93
CQS	92
TLCI(Qa)	82
GAI	52
TM-30-18 Rf	93
TM-30-18 Rg	103
Illuminance	2,875 lux
Foot Candle	267.1 fc
PPFD (400-700nm)	41.54 $\mu\text{mol}/\text{m}^2\text{s}$
λ_p	636 nm
λ_D	581 nm
Purity (Pe)	60 %
SP Ratio	1.4
Circadian Stimulus	0.60
Circadian Light	2,691
Flicker Percentage	41 %
Flicker Index	0.11
Flicker Frequency	135 Hz

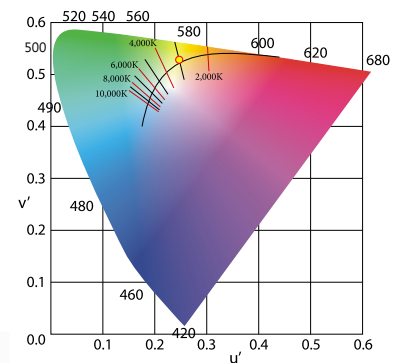
Spectrum



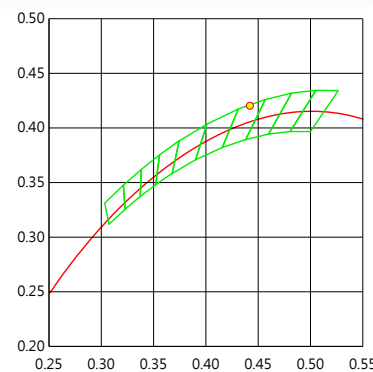
CIE 1931



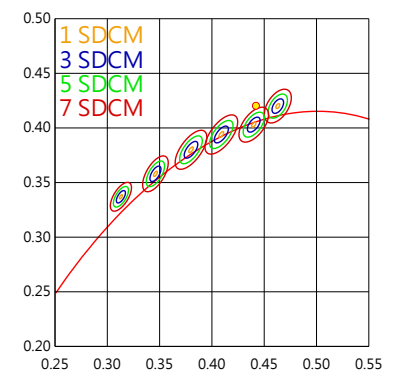
CIE 1976



C78.377 - 2017



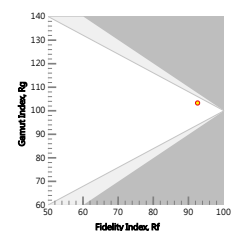
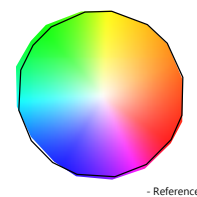
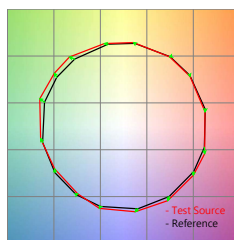
IEC-SDCM



CRI (Re) (R1-R15)

R1	98	R6	98	R11	82
R2	96	R7	96	R12	85
R3	90	R8	97	R13	99
R4	89	R9	87	R14	93
R5	97	R10	90	R15	96

TM-30-18



Hyperion Series

300W Fresnel, PC, Profile

(ver. 2023/02)



NOISE LEVEL DATA (silent mode)

Test conditions during measurements:

Temperature: 22°C
 Relative humidity: 79%
 Radius of spherical measuring surface: 2m



Test in hemi-anechoic room

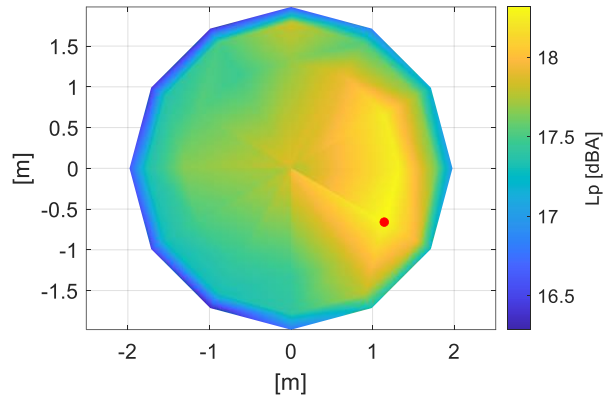
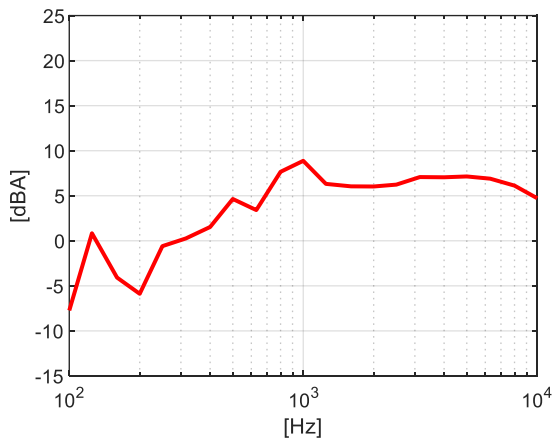
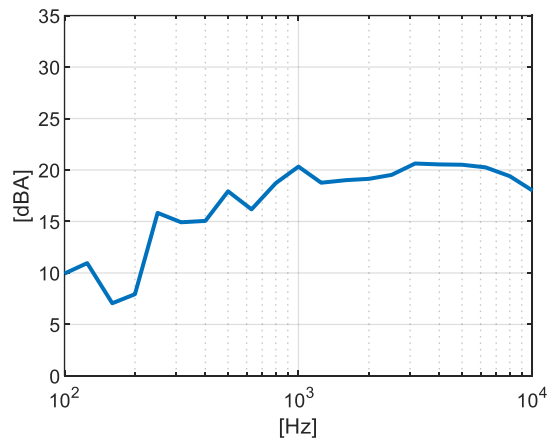


Diagram of Sound Pressure level L_p [dBA], the red point identifies the direction of maximum noise emission ¹



Sound pressure level spectrum [dBA] measured at maximum noise emission point



Sound power level spectrum L_{WA} [dBA]

Total sound pressure level L_p (0.1 – 10 kHz, ref. 2×10^{-5} Pa) at different distances²:

Distance	1 m	2 m	4 m	6 m
Sound pressure level L_p	24.3 dBA	18.3 dBA	12.3 dBA	8.8 dBA

The total sound power level L_{WA} is equal to 31.3 dBA (0.1 – 10 kHz, ref. 1×10^{-12} W).

¹The positive direction of X axis corresponds to the spotlight central axis and points in the direction of light emission

²Estimated Sound Pressure levels starting from the one measured at the point of maximum noise emissions at 2 m.

Hyperion Series

300W Fresnel, PC, Profile

(ver. 2023/02)

