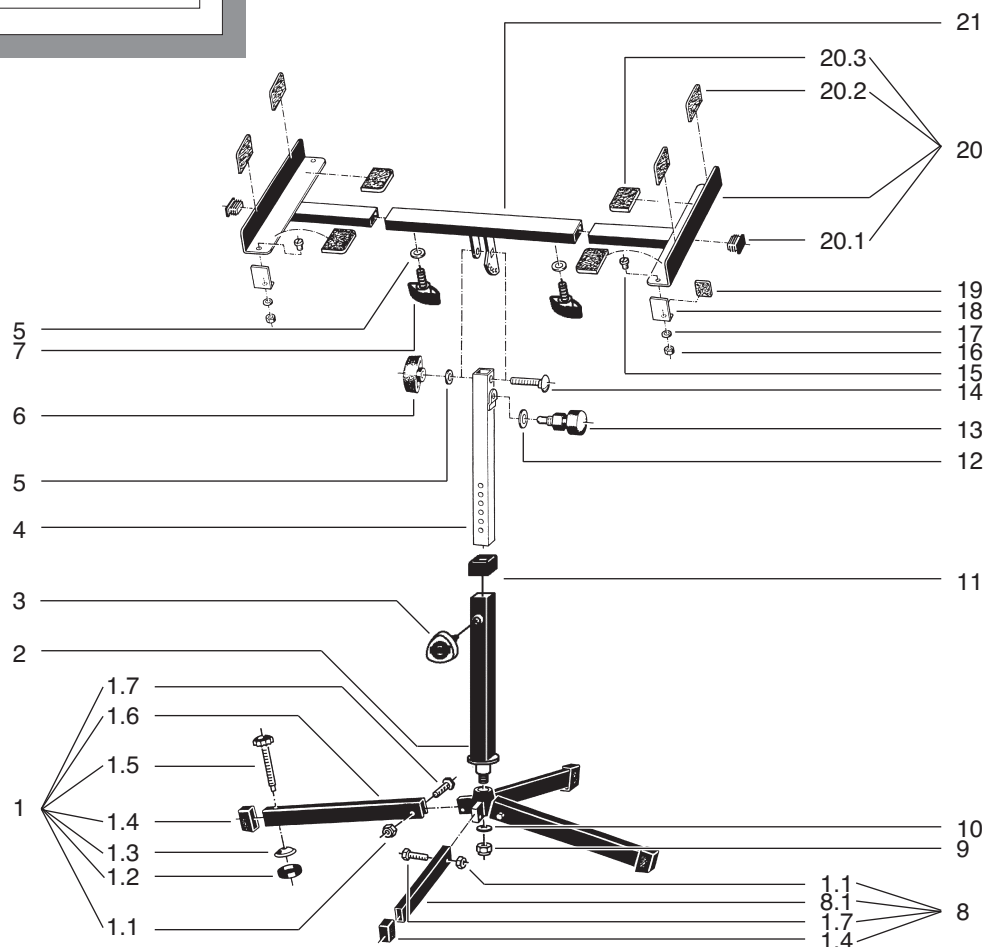


28075 Special Stand

28075.000.55 black



pos.	description	art.-no.	qty
1	adjustable leg complete, consisting of:	7.280.700655	1
1.1	locking nut M6	03.08.330.29	4
1.2	disc cover	01.87.150.55	1
1.3	threaded disk	03.12.810.01	1
1.4	end cap	01.84.790.55	4
1.5	leg adjustment screw M6 x 50 mm	01.81.240.55	1
1.6	threaded leg	02.15.191.55	1
1.7	hexagon screw M6 x 28 mm	03.01.340.29	4
2	base rod complete	5.28070.3.55	1
3	spring-loaded clamping knob complete	6.18810.2.55	1
4	extension rod complete	5.28075.2.01	1
5	washer	03.11.520.29	3
6	locking knob	01.83.980.55	1
7	star shaped locking bolt M8 x 18 mm	01.83.822.55	2
8	leg complete, consisting of:	7.280.700555	3
8.1	leg tubing	02.15.190.55	1
9	locking nut M10	03.08.622.29	1
10	washer	03.11.640.29	1
11	plastic cap	01.97.395.55	1
12	washer	03.11.640.29	1
13	spring loaded adjustment bolt	6.28070.1.00	1
14	carriage bolt M8 x 40 mm	03.07.550.25	1
15	cylinder screw M4 x 8 mm	03.05.118.01	2
16	hexagon nut M4	03.08.110.01	2
17	washer	03.11.210.01	2
18	back square	01.29.558.55	2
19	felt pad	03.21.540.55	2
20	adjustable support arm complete, consisting of:	5.28070.2.55	2
20.1	end cap	03.20.800.55	2
20.2	felt pad	03.21.690.55	2
20.3	felt pad	03.21.680.55	2
21	support arm brace complete	5.28075.1.55	1