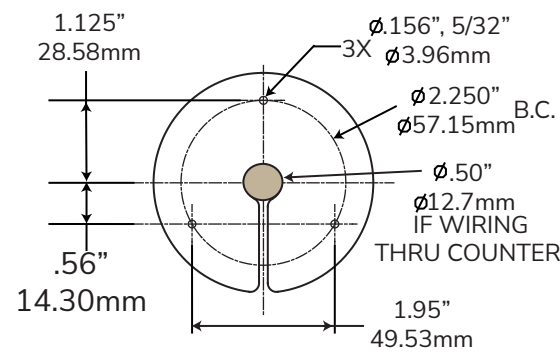
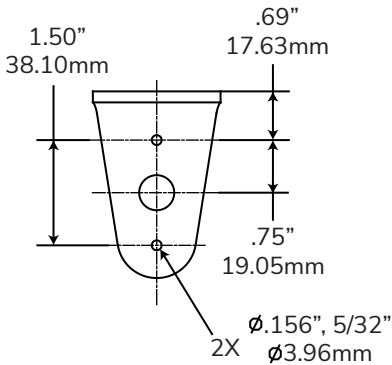


Mounting Options

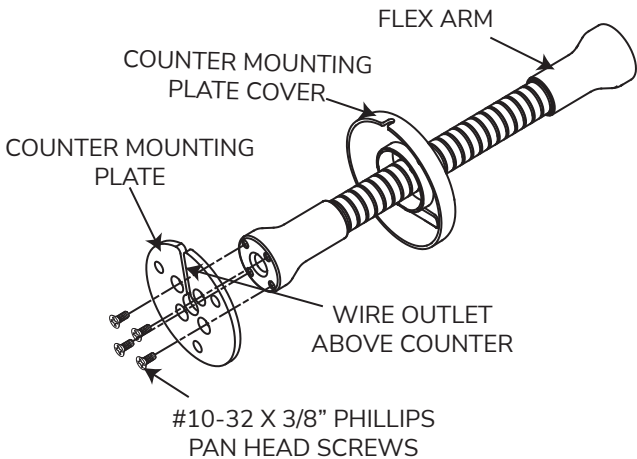
COUNTER MOUNTING



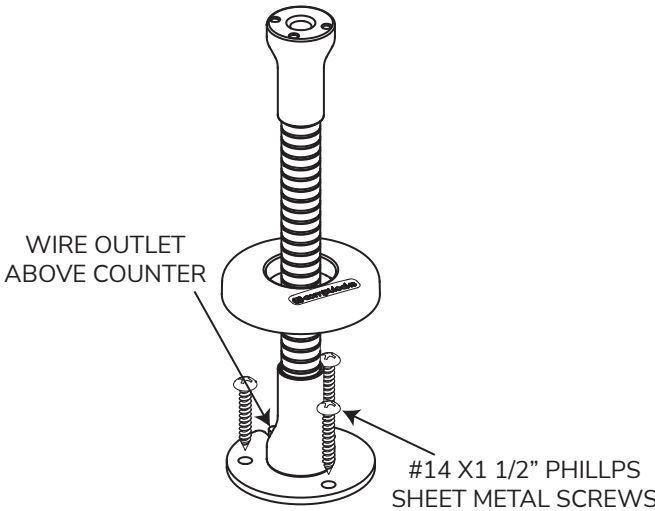
WALL MOUNTING



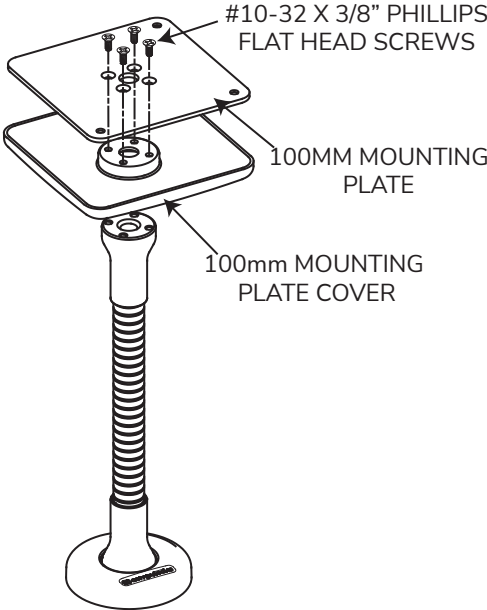
1



2



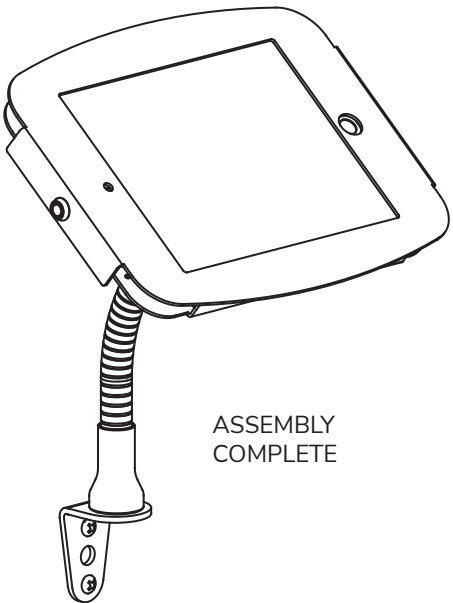
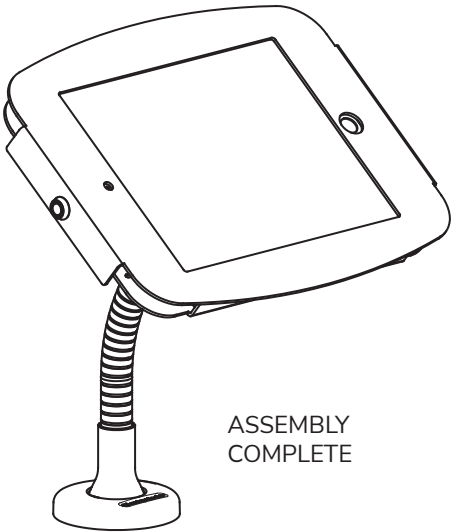
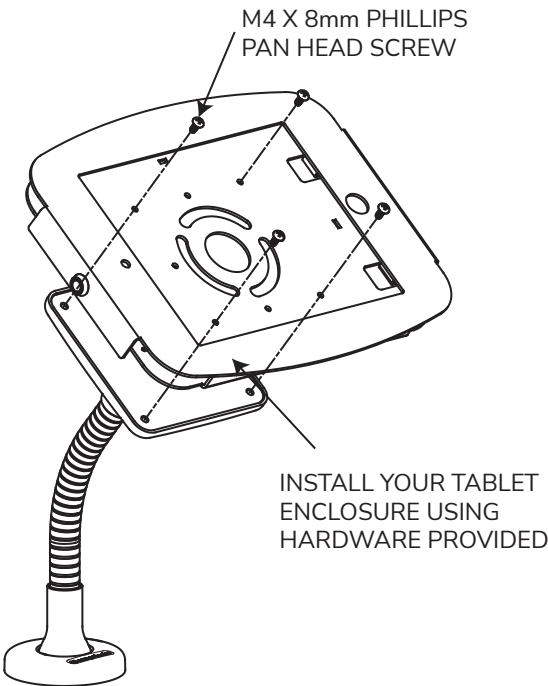
3



4

COUNTER

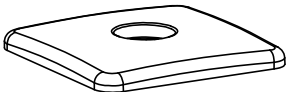
WALL MOUNT



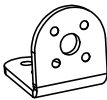
IN THE BOX



Mounting
Plate Cover



100mm
Plate Cover



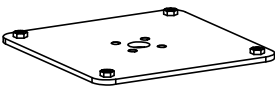
Right Angle
Mounting Bracket



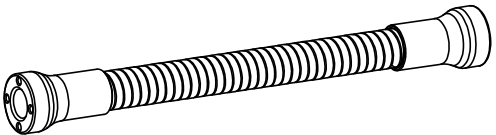
Hardware Kit



Mounting
Bracket

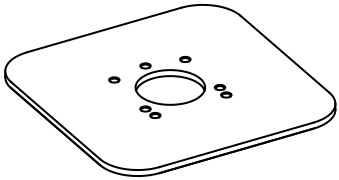


100mm Bracket



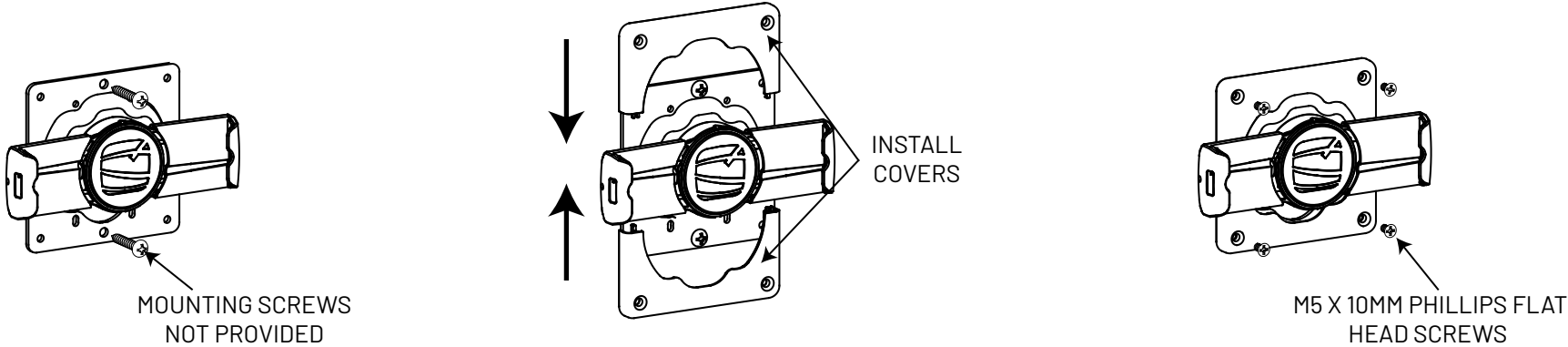
Flex Arm

ACCESSORIES

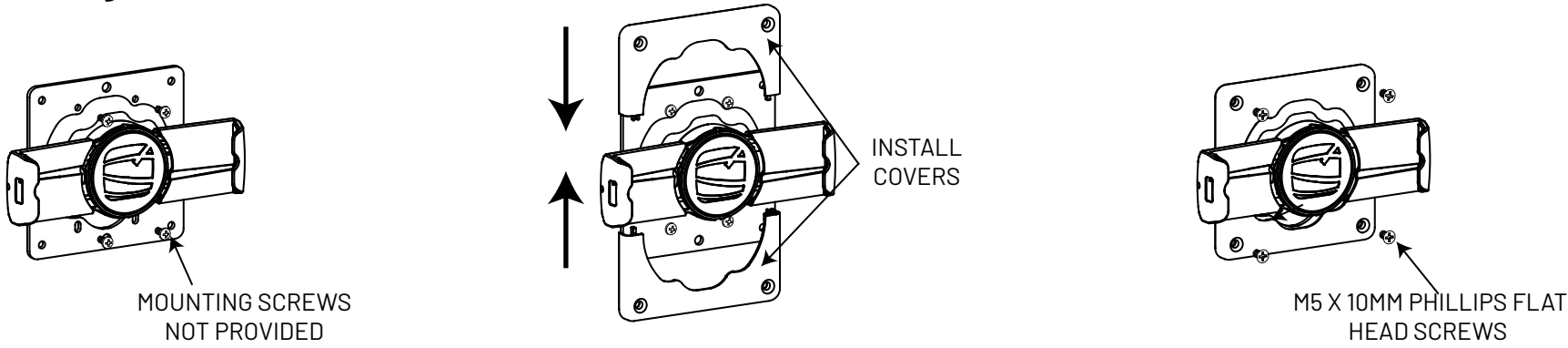


Adhesive Base

Wall Mounting



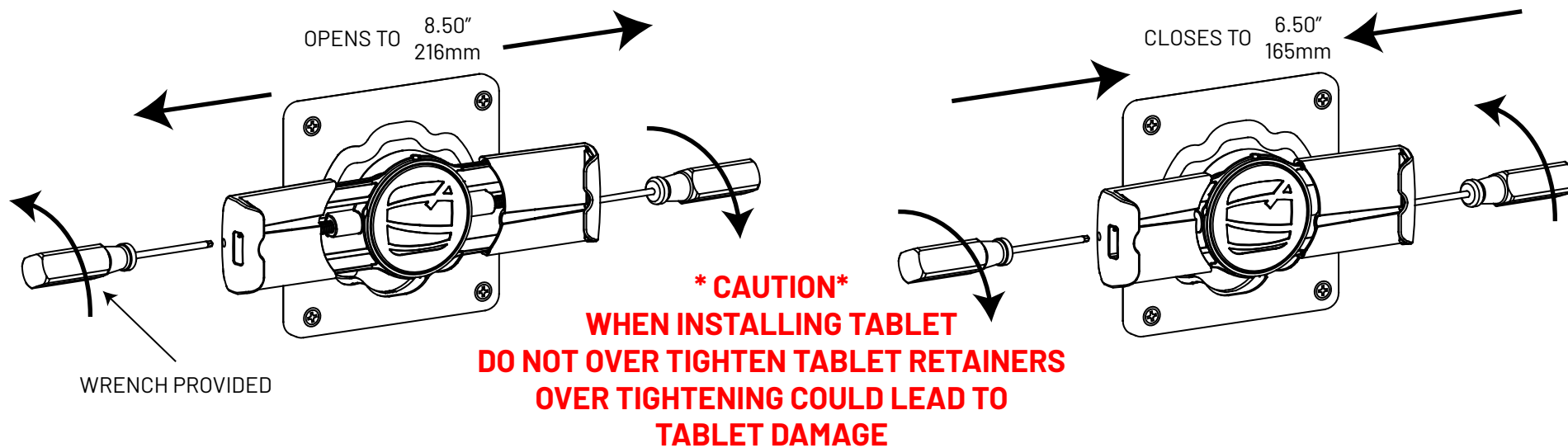
J-Box Mounting



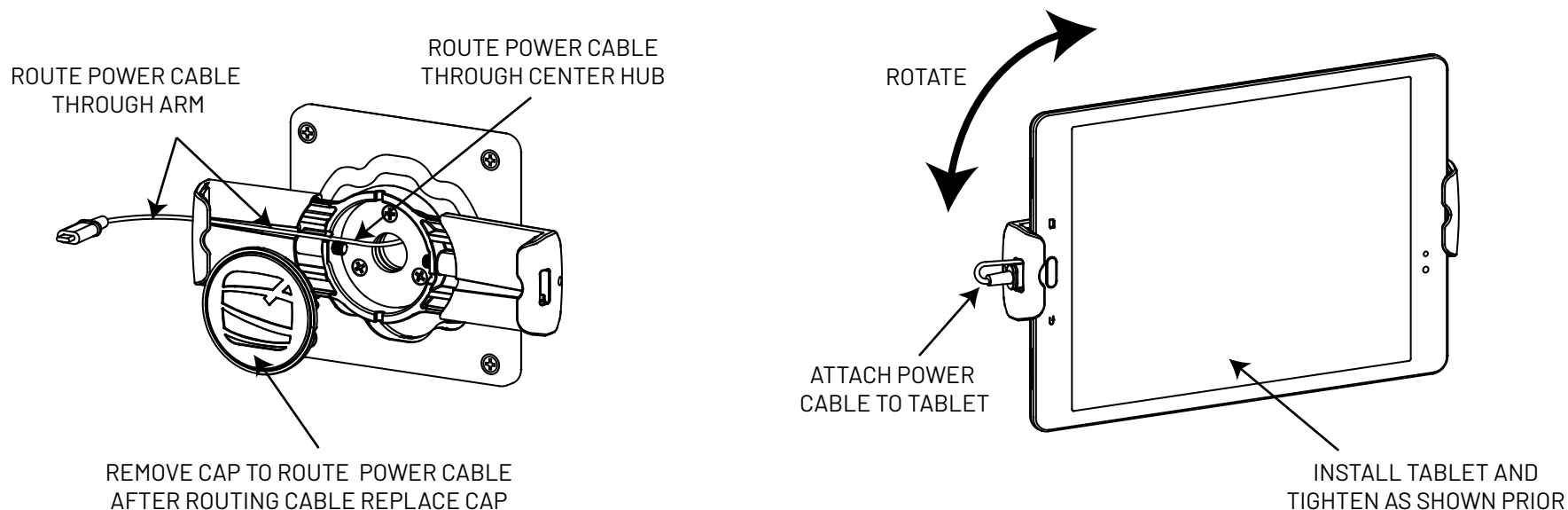
100mm Vesa Mounting



Minimum and Maximum Opening of Mount

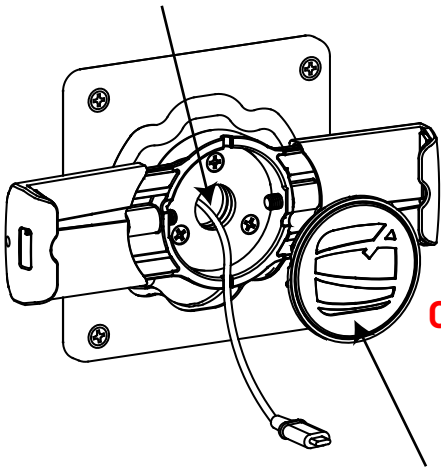


Tablet Portrait Installation



Tablet Landscape Installation

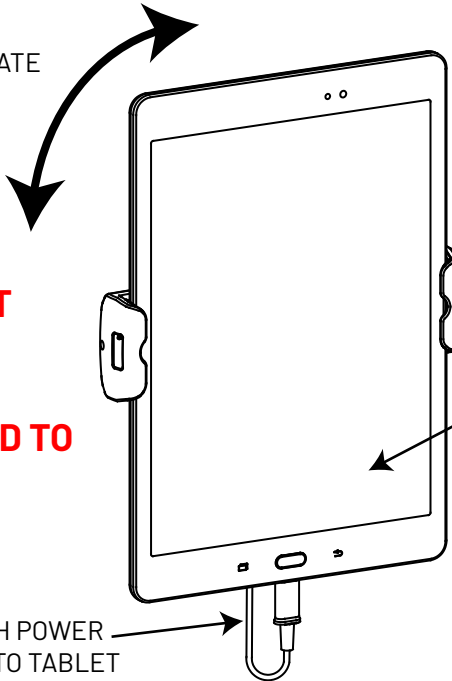
ROUTE POWER CABLE
THROUGH CENTER HUB



REMOVE CAP TO ROUTE POWER CABLE
AFTER ROUTING CABLE REPLACE CAP

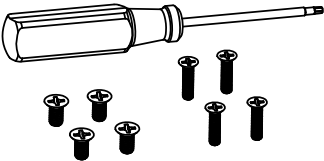
*** CAUTION***
WHEN INSTALLING TABLET
DO NOT OVER TIGHTEN
TABLET RETAINERS
OVER TIGHTENING COULD LEAD TO
TABLET DAMAGE

ROTATE

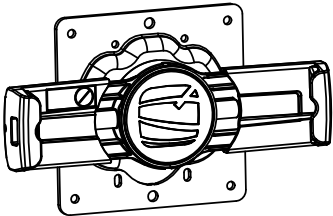


INSTALL TABLET AND
TIGHTEN AS SHOWN PRIOR

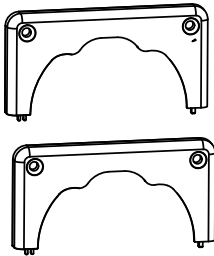
IN THE BOX



Hardware Kit



Cling VESA 100mm



Covers