

Universe	Professional
Type	Verticality
Category	Harnesses
Subcategory	Harnesses for fall arrest, work positioning and suspension

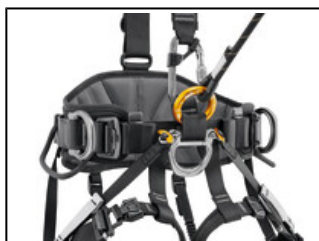


AVAO® FAST European Version

The AVAO FAST harness is specifically designed for workers at height. Its design is specific to work positioning and rope descent. Contoured foam on the semi-rigid waistbelt and leg loops provide comfort during use. The waistbelt features metal side attachment points, equipment loops, and tool holder slots, allowing the user to organize all the necessary equipment for a day of work. Adjustment is quick, easy, and convenient, with self-locking DOUBLEBACK buckles and FAST opening buckles.



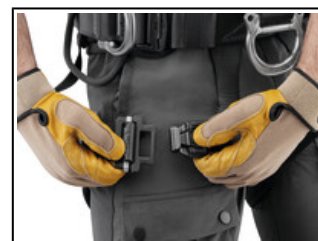
With an ergonomic construction, the AVAO FAST harness allows users to work and move comfortably throughout the workday.



Textile loop on the ventral connection point (for installing a lanyard with a RING OPEN) and a metal D ring (for installing a PODIUM or LITEPOD work seat).



The waistbelt is equipped with five equipment loops and two slots for tool holders, for optimal equipment management.



Leg loops are equipped with FAST opening buckles that fasten and unfasten quickly and easily, even while wearing gloves, without needing to readjust.

Short Description Comfortable and versatile harness for work at height

Selling Points

- Comfortable construction:
 - Widely spaced shoulder straps reduce neck chafing
 - Thin, sliding straps provide more freedom and ease of movement
 - All contact zones use contoured foam and are lined with breathable material, including the shoulder straps, waistbelt and leg loops, making it more comfortable to work and move around
 - Semi-rigid waistbelt and leg loops provide optimal harness fit and support
 - Metal side attachment points can be folded down to prevent them snagging accidentally when not in use
 - Elastic leg loop bands (replaceable and available as an accessory) allow the harness to maintain the right adjustment whether the user is walking or suspended
- Convenient and quick to adjust:
 - Self-locking DOUBLEBACK buckles on the shoulder straps and waistbelt, and FAST opening buckles on the leg loops make adjustments quick, easy, and convenient
 - Anti-slip devices installed on the DOUBLEBACK buckles help maintain the right adjustment throughout the workday
- Easy to carry and organize equipment:
 - Metal ventral D ring is equipped with connection points to install a PODIUM or LITEPOD work seat
 - Ventral connection point features a textile loop that allows the user to install a lanyard with a RING OPEN attachment ring
 - Two side metal attachment points for connecting a positioning lanyard in double mode
 - Five pre-shaped equipment loops with protective sheath
 - Two slots for CARITOOL tool holders or the INTERFAST connection system

Specification

- Ventral attachment point: Attachment for a descender, a positioning lanyard in single mode, a work seat on the ventral D ring; attachment for a lanyard with a RING OPEN to the textile connection point
- Lateral attachment points: Attachment for a positioning lanyard for use in double mode
- Sternal attachment point: Attachment for a fall-arrest system
- Dorsal attachment point: Attachment for a fall-arrest system
- Rear attachment point on the waistbelt: Attachment for a restraint lanyard
- Certification(s): CE EN 361, EN 813, EN 358
- Material(s): Nylon, polyester, aluminum, steel

Specifications by reference

Reference(s)	C071BB00	C071BB01	C071BB02	C071BB03
Color(s)	Black, Yellow	Black, Yellow	Black, Yellow	Black
Size	0	1	2	0
Waist belt	65-80 cm	70-93 cm	83-120 cm	65-80 cm
Leg loops	44-59 cm	47-62 cm	50-65 cm	44-59 cm
Stature	160-180 cm	165-185 cm	175-200 cm	160-180 cm
Weight	1695 g	1735 g	1835 g	1695 g
Made in	RO	RO	RO	RO
Guarantee	3 years	3 years	3 years	3 years
Inner Pack Count	1	1	1	1
Quantity Per Box	3	3	3	3
EAN	3342540845428	3342540845435	3342540845442	3342540845459

Reference(s)	C071BB04	C071BB05
Color(s)	Black	Black
Size	1	2
Waist belt	70-93 cm	83-120 cm
Leg loops	47-62 cm	50-65 cm
Stature	165-185 cm	175-200 cm
Weight	1735 g	1835 g
Made in	RO	RO
Guarantee	3 years	3 years
Inner Pack Count	1	1
Quantity Per Box	3	3
EAN	3342540845466	3342540845480

Spare part(s) DOUBLEBACK Locking Accessory
Elastic Keepers 45 mm
Plastic Keepers 45 mm

Accessory(ies) Lanyard Connector Parking
RING OPEN
CARITool
INTERFAST
TOOLEASH
MINO
Shackles

Related product(s) ASAP®
ASAP® LOCK
ASAP'SORBER
PODIUM
LITEPOD
I'D® S
JANE-I
PROGRESS ADJUST-I Progression Lanyard
PROGRESS ADJUST-Y
ABSORBICA®-Y MGO European Version
GRILLON

- In addition to routine checks for each use, PPE should regularly undergo a detailed inspection by a competent person. Petzl recommends an inspection every 12 months and after any exceptional event in the life of the product.
 - PPE inspection should be conducted with the manufacturer's Instructions for Use.
- Download the instructions at [PETZL.COM](https://www.petzl.com).

PROFESSIONAL HARNESSSES

User information

Surname

Address

Identifier

PPE information

Model

Serial number

Year of manufacture

Date of purchase

Date of first use

Manufacturer: Petzl, ZI Cidex 105A - 38920 Crolles - France



Good condition (G)



To monitor (TM)



To repair (TR)



Do not use, retire (R)

N/A

Not applicable

1. Known product history

Usage conditions or exceptional event during use (examples: fall or fall arrest, use or storage at extreme temperatures, modification outside manufacturer's facilities...):



N/A

2. Preliminary observations

- Verify the presence and legibility of the serial number and the CE mark.
- Verify that the product lifetime has not been exceeded.
- Compare with a new product to verify there are no modifications or missing parts.

3. Checking the condition of the straps

- Check for cuts, swelling, damage and wear due, for example, to use, to heat, and to contact with chemicals. Check the waistbelt straps, leg loops, leg loop/waistbelt linkage and shoulder straps, if present. Be sure to check the areas hidden by the buckles.
- Check the condition of the safety stitching on both sides. Look for any threads that are loose, worn, or cut. Safety stitching is identified by thread of a different color than that of the webbing.
- Verify that hems are present on the strap ends.

4. Checking the fall arrest indicators

- On the international versions of the NAVAHO, NEWTON, AVAO, ASTRO, VOLT harnesses: check the dorsal fall arrest indicator.
- On the European version of the VOLT harnesses: check the stitching on the LADDER CLIMB attachment-point strap.

5. Checking the attachment points

- Check the condition of the metal attachment points (absence of any deformation, cracks, marks, wear, corrosion).
- Check the condition of the plastic attachment points (e.g. cuts, wear, tears).
- Check the condition of the textile attachment points (e.g. cuts, wear, tears).

6. Checking the condition of the adjustment buckles

- Check the condition of the FAST adjustment buckles (absence of any deformation, cracks, marks, wear, corrosion).
- Check the condition of the DOUBLEBACK adjustment buckles (absence of any deformation, cracks, marks, wear, corrosion).
- Check that the straps are correctly threaded, with no twists.
- Verify that the buckles operate properly.

7. Checking the condition of the comfort parts

- Check the condition of the waist, leg and shoulder foams (e.g. cuts, wear, tears).
- Check the condition of the leg loop elastic bands (e.g. cuts, wear, tears).
- Check the condition of the elastic and/or plastic keepers (e.g. cuts, wear, tears).
- Check the condition of the equipment loops (e.g. cuts, wear, tears).

8. Checking the condition of the chest/sit harness connector (if any)

- For connector inspection, see the inspection form for your connector model at Petzl.com.
- If the harness features a chest/sit harness connector, make sure that it is present.
- Verify that the connector is the correct model and that it is correctly attached to the harness.
- Gated attachment point: verify that the screws on the gated attachment point are in place and properly tightened.

9. Checking the condition of the CROLL rope clamp (if any)

- For rope clamp inspection, see the inspection form for your rope clamp model at Petzl.com.

10. Special case for SEQUOIA/SEQUOIA SRT harnesses

- Check the condition of the textile attachment bridge (e.g. cuts, wear, tears). For attachment bridges made of rope: make sure the rope shows no signs of damage: e.g. cuts, burns, frayed strands, fuzzy areas, or signs of chemicals.
- Check the condition of the gated rings (absence of deformation, cracks, marks, wear, corrosion). Verify that the screw is in place and properly tightened.

11. Special case: NEWTON HI-VIZ

- On the HI-VIZ models, check the condition of the HI-VIZ vest and of the reflective bands (e.g. cuts, wear, fading).

Comments (detail here any defects found on the product and accomplished tasks)

VERDICT

Product **fit** to remain in service

Product **unfit** to remain in service

Inspected by

Company

Date

Next inspection date

- In addition to routine checks for each use, PPE should regularly undergo a detailed inspection by a competent person. Petzl recommends an inspection every 12 months and after any exceptional event in the life of the product.
 - PPE inspection should be conducted with the manufacturer's Instructions for Use.
- Download the Instructions at [PETZL.COM](https://www.petzl.com).



PROFESSIONAL HARNESSSES

1. Known product history

Any PPE showing questionable degradation should be quarantined, pending a detailed inspection.

The user should:

- Provide precise information on the usage conditions.
 - Report any exceptional event regarding their PPE.
- (Examples: fall or fall arrest, use or storage at extreme temperatures, modification outside manufacturer's facilities).



2. Preliminary observations

Verify the presence and legibility of the serial number and the CE mark.

Note: the serial number code on our products is evolving. Two types of code will coexist. See below for details on each serial number code.

Code A:

00 000 AA 0000

Year of manufacture
 Day of manufacture
 Name of Inspector
 Incrementation

Code B:

00 A 0000000 000

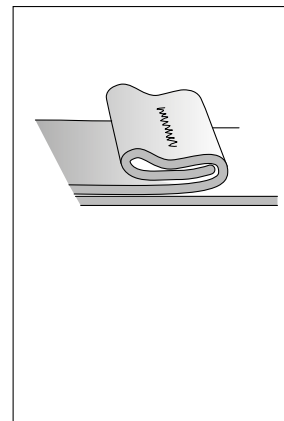
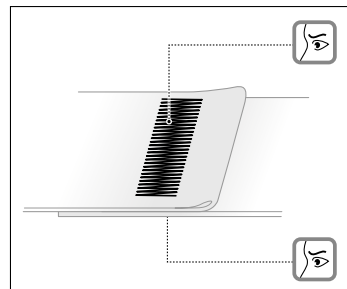
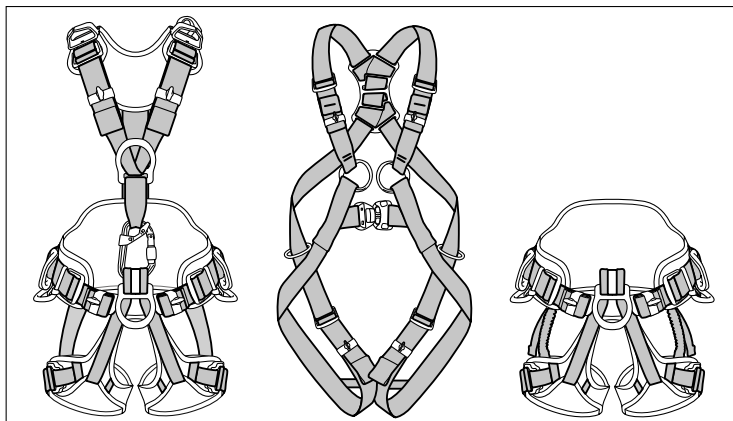
Year of manufacture
 Month of manufacture
 Batch number
 Incrementation



Verify that the product lifespan has not been exceeded.
 Compare with a new product to verify there are no modifications or missing parts.

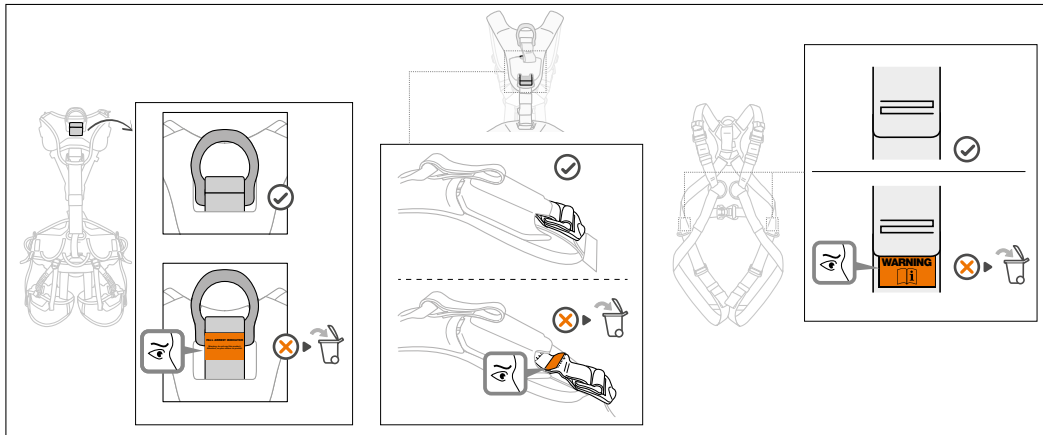
3. Checking the condition of the straps

- Check for cuts, swelling, damage and wear due, for example, to use, to heat, and to contact with chemicals. Check the waistbelt straps, leg loops, leg loop/waistbelt linkage and shoulder straps, if present. Be sure to check the areas hidden by the buckles.
- Check the condition of the safety stitching on both sides. Look for any threads that are loose, worn, or cut. Safety stitching is identified by thread of a different color than that of the webbing.
- Verify that hems are present on the strap ends.

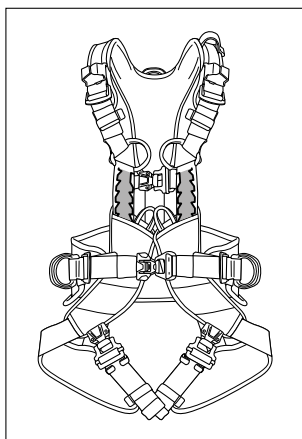


4. Checking the fall arrest indicators

- On the international versions of the NAVAHO, NEWTON, AVAO, ASTRO, VOLT harnesses: check the dorsal fall arrest indicator.

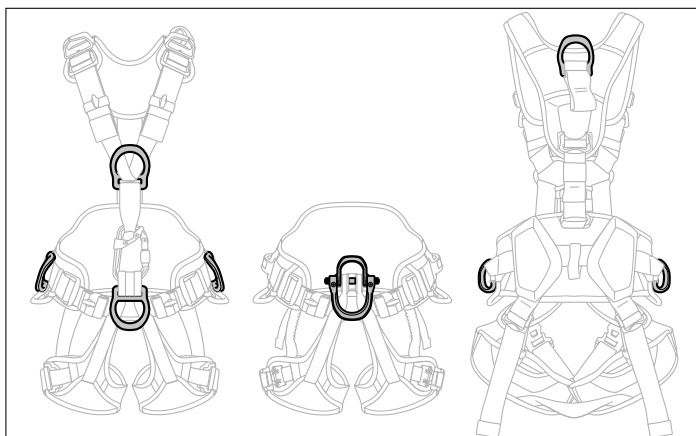


- On the European version of the VOLT harnesses: check the stitching on the LADDER CLIMB attachment-point strap.

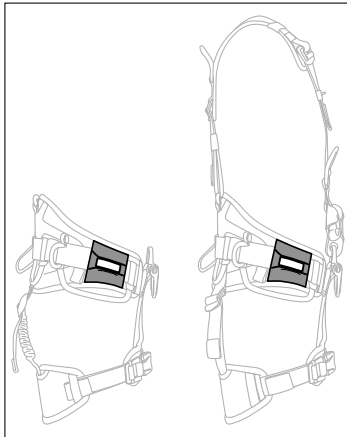


5. Checking the attachment points

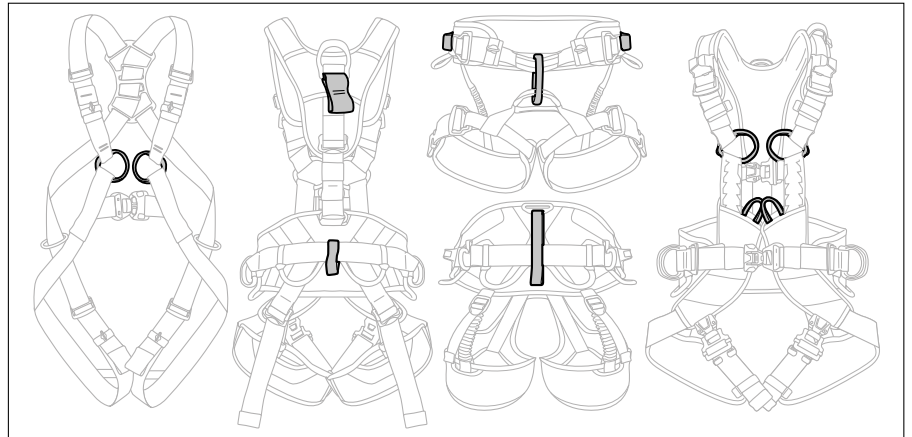
- Check the condition of the metal attachment points (absence of any deformation, cracks, marks, wear, corrosion).



- Check the condition of the plastic attachment points (e.g. cuts, wear, tears).

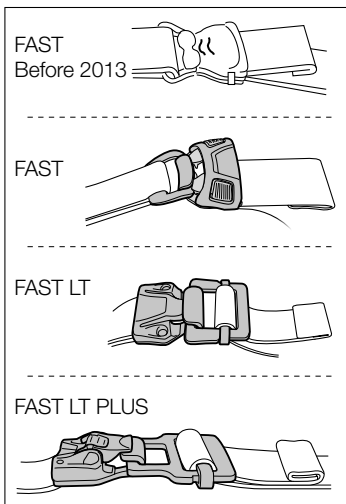


- Check the condition of the textile attachment points (e.g. cuts, wear, tears).

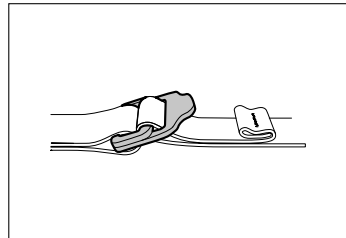


6. Checking the condition of the adjustment buckles

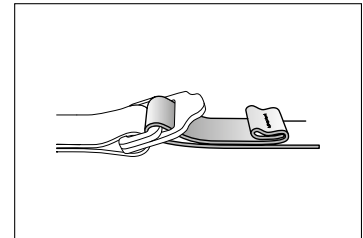
- Check the condition of the FAST adjustment buckles (absence of any deformation, cracks, marks, wear, corrosion).



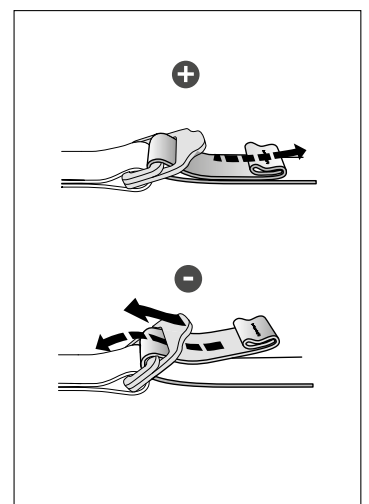
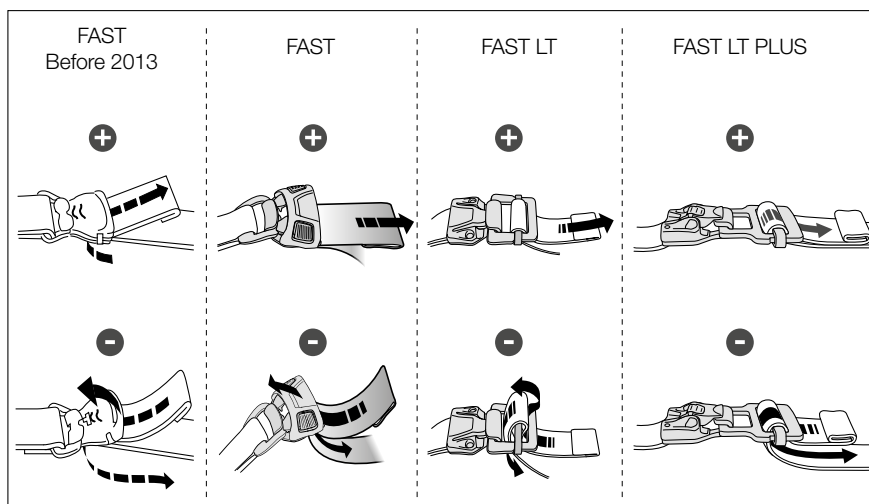
- Check the condition of the DOUBLEBACK adjustment buckles (absence of any deformation, cracks, marks, wear, corrosion).

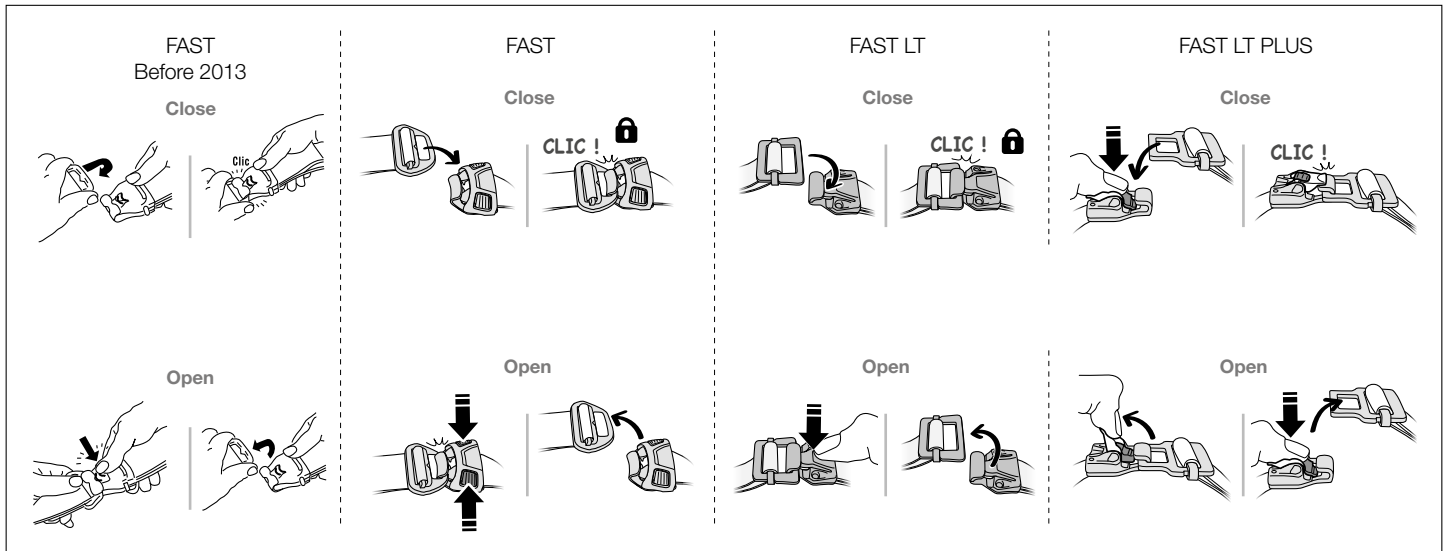


- Check that the straps are correctly threaded, with no twists.



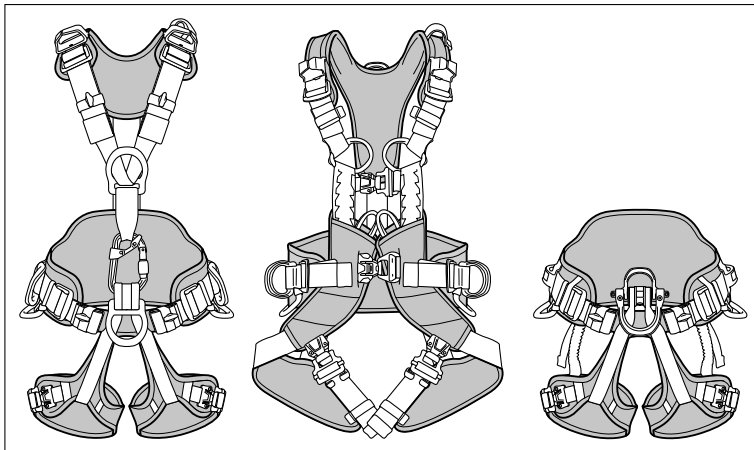
- Verify that the buckles operate properly.



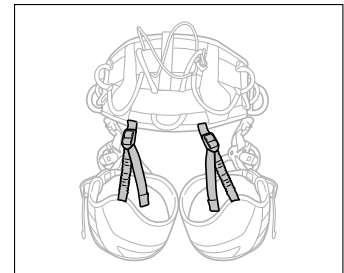


7. Checking the condition of the comfort parts

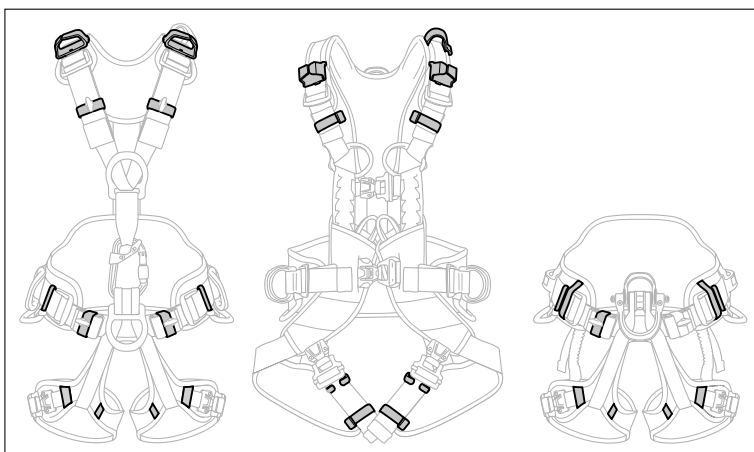
- Check the condition of the waist, leg and shoulder foams (e.g. cuts, wear, tears).



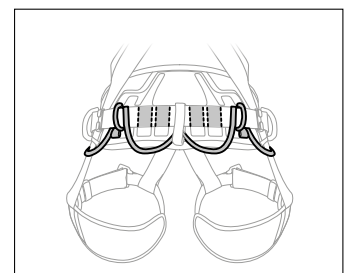
- Check the condition of the leg loop elastic bands (e.g. cuts, wear, tears).



- Check the condition of the elastic and/or plastic keepers (e.g. cuts, wear, tears).

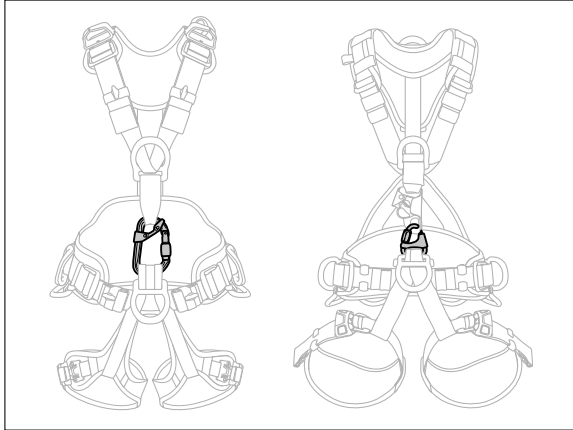


- Check the condition of the equipment loops (e.g. cuts, wear, tears).



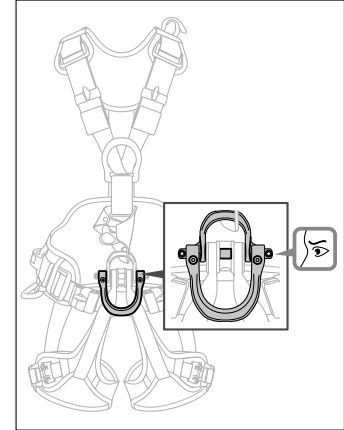
8. Checking the condition of the chest/sit harness connector (if any)

- For connector inspection, see the inspection form for your connector model at Petzl.com.



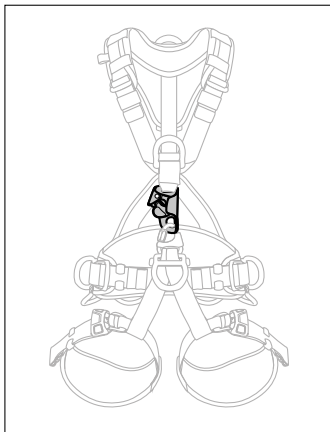
- If the harness features a chest/sit harness connector, make sure that it is present.
- Verify that the connector is the correct model and that it is correctly attached to the harness.

- Gated attachment point: verify that the screws on the gated attachment point are in place and properly tightened.



9. Checking the condition of the CROLL rope clamp (if any)

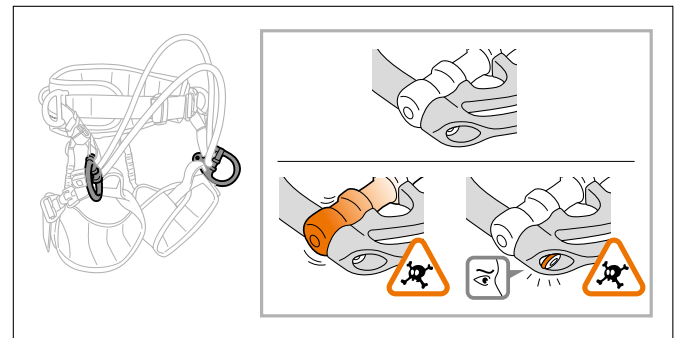
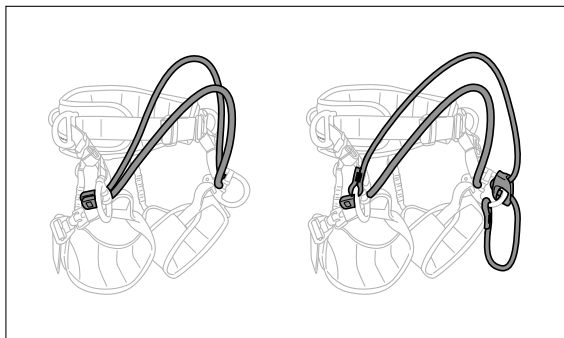
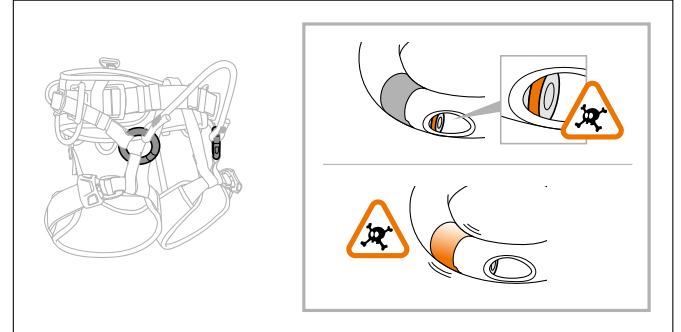
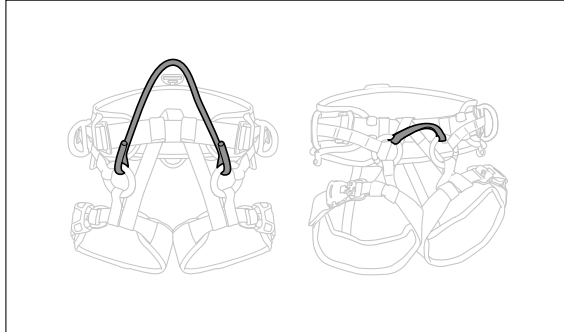
- For rope clamp inspection, see the inspection form for your rope clamp model at Petzl.com.



10. Special case for SEQUOIA/SEQUOIA SRT harnesses

- Check the condition of the textile attachment bridge (e.g. cuts, wear, tears). For attachment bridges made of rope: make sure the rope shows no signs of damage: e.g. cuts, burns, frayed strands, fuzzy areas, or signs of chemicals.

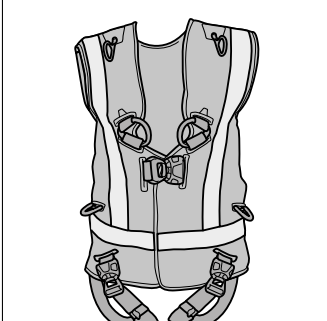
- Check the condition of the gated rings (absence of deformation, cracks, marks, wear, corrosion). Verify that the screw is in place and properly tightened.



		SEQUOIA V1	SEQUOIA V2	SEQUOIA V3 (2019)
Mounting compatibility (certification not taken into account)				
Bridge v1 Strap		✓	✓	✓
Bridge v2 Rope with eye		✗	✓	✓
Bridge v3 (2019) With stopper		✗	✗	✓
ADJUST bridge v2 and v3		✗	✓	✓

11. Special case: NEWTON HI-VIZ

- On the HI-VIZ models, check the condition of the HI-VIZ vest and of the reflective bands (e.g. cuts, wear, fading).



12. Appendices: examples of worn harnesses that should be retired or repaired

- Onset of breakage of the waistbelt strap



- Cut equipment loop



- Cut load-adjustment strap



- Damaged protective fabric



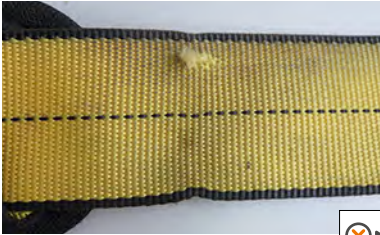
- Damaged protective fabric



- Reversed bar



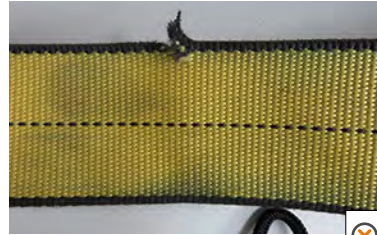
- Snagged webbing



- Marking on webbing



- Cut webbing



- Damaged webbing



- Damaged webbing



- Unstitched hem



- Damaged attachment point



- Fall indicator is visible



- Damaged safety stitching



- Damaged attachment point



- Damaged attachment point



- Damaged attachment point



- Worn out D-ring



- Broken buckle



- Corrosion



- Corrosion



- Traces of paint



- Buckle not working



► Petzl contact