



# evolution wireless G4 500 P series

Instruction Manual

Sennheiser electronic GmbH & Co. KG

**SENNHEISER**

Am Labor 1, 30900 Wedemark, Germany, [www.sennheiser.com](http://www.sennheiser.com)  
ew 500 P G4 - v1.1



## **Overview 6**

### **ew 500 P G4 series products 7**

- EK 500 G4 diversity receiver 8
- SKM 500 G4 handheld transmitter 9
- SK 500 G4 bodypack transmitter 10
- SKP 500 G4 plug-on transmitter 11

### **Accessories 12**

- Microphones and cables 12
  - Microphone modules 12
  - Headset and Lavalier microphones 13
  - Line connecting cable 13
- Rechargeable battery and charger 14
  - BA 2015 rechargeable battery 14
  - L 2015 charger 14
- Accessories for camera mounting 15
  - CA 2 camera adapter 15
- Additional accessories 16
  - Color labeling set 16
  - Microphone clamp 16

### **The frequency bank system 17**

### **Installing ew 500 P G4 series devices 18**

#### **Installing the EK 500 G4 19**

- Inserting and removing the batteries/rechargeable batteries 19
  - Battery status 20
- Connecting headphones to the EK 500 G4 21
- Attaching the diversity receiver to a camera 22
- Connecting the diversity receiver to a camera 24

#### **Installing the SKM 500 G4 25**

- Inserting and removing the batteries/rechargeable batteries 25
  - Battery status 26
- Replacing the microphone module 27
- Changing the colored ring 28

#### **Installing the SK 500 G4 29**

- Inserting and removing the batteries/rechargeable batteries 29
  - Battery status 30
- Connecting a microphone to the SK 500 G4 31
- Connecting an instrument or line source to the SK 500 G4 32
- Attaching the bodypack transmitter to clothing 33

#### **Installing the SKP 500 G4 34**

- Inserting and removing the batteries/rechargeable batteries 34
  - Battery status 35
- Attaching the plug-on transmitter to the microphone 36

### **Using ew 500 P G4 series devices 37**

#### **Using the EK 500 G4 39**

- Operating elements of the EK 500 G4 diversity receiver



- 39
- Switching the EK 500 G4 on and off 41
- Volume control of the PHONES socket 42
- Lock-off function 43
- Displays on the EK 500 G4 display panel 44
- Buttons for navigating through the menu 44
- Home screen 46
  - Frequency/Name** standard display 46
  - Frequency Bank/Channel/Name** standard display 47
- Setting options in the menu 48
- Menu structure 50
- Sync menu item 51
- Phones Volume menu item 51
- Squelch menu item 52
- Easy Setup menu item 54
- Frequency Preset menu item 55
- Name menu item 55
- AF Out menu item 56
- Auto Lock menu item 57
- Advanced menu item 58
- Advanced -> Tune menu item 59
  - Only adjusting the frequency 59
  - Setting the channel and frequency 59
- Advanced -> Sync Settings menu item 60
- Advanced -> Pilot Tone menu item 61
- Advanced -> LCD Contrast menu item 61
- Advanced -> Reset menu item 62
- Advanced -> Software Revision menu item 62

## **Using the SKM 500 G4 63**

- Operating elements of the SKM 500 G4 handheld transmitter 63
- Switching the SKM 500 G4 handheld transmitter on and off 64
- Muting the handheld transmitter (AF mute) 65
- Deactivating the RF signal (RF mute) 65
- Lock-off function 66
- Displays on the SKM 500 G4 handheld transmitter display panel 67
  - Select a standard display 68
- Buttons for navigating the SKM 500 G4 menu 69
  - Navigating through the menu 69
  - Making changes in a menu item 69
- Setting options in the menu 70
- Sensitivity menu item 71
- Frequency Preset menu item 71
- Name menu item 72
- Auto Lock menu item 72
- Advanced menu item 73
- Advanced > Tune menu item 74
  - Only adjusting the frequency 74
  - Setting the channel and frequency 74
- Advanced > RF Power menu item 75



- Advanced > Pilot Tone menu item 75
- Advanced > LCD Contrast menu item 76
- Advanced > Reset menu item 76
- Advanced > Software Revision menu item 76

### **Using the SK 500 G4 77**

- Operating elements of the SK 500 G4 bodypack transmitter 77
- Switching the SK 500 G4 bodypack transmitter on and off 79
- Muting the bodypack transmitter (AF mute) 80
- Deactivating the RF signal (RF mute) 81
  - Deactivating the RF signal with the **MUTE** switch 81
  - Deactivating the RF signal with the **ON/OFF** button 82
- Lock-off function 83
- Displays on the SK 500 G4 bodypack transmitter display panel 84
  - Select a standard display 85
- Buttons for navigating the SK 500 G4 menu 86
  - Navigating through the menu 86
  - Making changes in a menu item 86
- Setting options in the menu 87
- Sensitivity menu item 88
- Frequency Preset menu item 88
- Name menu item 89
- Auto Lock menu item 89
- Advanced menu item 90
- Advanced > Tune menu item 91
  - Only adjusting the frequency 91
  - Setting the channel and frequency 91
- Advanced > Mute Mode menu item 92
- Advanced > RF Power menu item 92
- Advanced > Pilot Tone menu item 93
- Advanced > LCD Contrast menu item 93
- Advanced > Reset menu item 93
- Advanced > Software Revision menu item 93

### **Using the SKP 500 G4 94**

- Operating elements of the SKP 500 G4 plug-on transmitter 94
- Switching the SKP 500 G4 plug-on transmitter on and off 95
- Muting the plug-on transmitter (AF mute) 96
- Deactivating the RF signal (RF mute) 97
  - Deactivating the RF signal with the **MUTE** switch 97
  - Deactivating the RF signal with the **ON/OFF** button 98
- Lock-off function 99
- Displays on the SKP 500 G4 plug-on transmitter display panel 100
  - Select a standard display 101
- Buttons for navigating the SKP 500 G4 menu 102
  - Navigating through the menu 102
  - Making changes in a menu item 102



- Setting options in the menu 103
- Sensitivity menu item 104
- Frequency Preset menu item 104
- Name menu item 105
- Auto Lock menu item 105
- Advanced menu item 106
- Advanced > Tune menu item 107
  - Only adjusting the frequency 107
  - Setting the channel and frequency 107
- Advanced > Mute Mode menu item 108
- Advanced > RF Power menu item 108
- Advanced > Phantom Power 48V menu item 109
- Advanced > Pilot Tone menu item 109
- Advanced > LCD Contrast menu item 109
- Advanced > Reset menu item 109
- Advanced > Software Revision menu item 109

## **Establishing a radio link 110**

- Setting notes 110

## **Synchronizing devices 111**

### **Overview 112**

### **Product variants 113**

- EK 500 G4 product variants 113
  - Made in Germany 113
  - Assembled in the USA 113
- SKM 500 G4 product variants 114
  - Made in Germany 114
  - Assembled in the USA 114
- SK 500 G4 product variants 115
  - Made in Germany 115
  - Assembled in the USA 115
- SKP 500 G4 product variants 116
  - Made in Germany 116
  - Assembled in the USA 116

## **Frequency tables 117**

### **Specifications 118**

- EK 500 G4 119
  - RF characteristics 119
  - AF characteristics 120
  - Overall device 120
- SKM 500 G4 121
  - RF characteristics 121
  - AF characteristics 122
  - Overall device 122
- SK 500 G4 123
  - RF characteristics 123
  - AF characteristics 124
  - Overall device 124
- SKP 500 G4 125
  - RF characteristics 125
  - AF characteristics 126
  - Overall device 126



## **Pin assignment 127**

3.5 mm stereo jack plug 127

3.5 mm mic jack plug 127

3.5 mm line jack plug 127

6.3 mm stereo jack plug, balanced (audio in/loop out)  
127

6.3 mm mono jack plug, unbalanced 128

6.3 mm stereo jack plug for headphone jack 128

XLR-3 plug, balanced 128

Hollow jack plug for power supply 128

## **Cleaning and maintenance 129**

Cleaning the sound inlet basket of the microphone module 129

## **Contact 131**

Instruction manual as a PDF 131

Customer service 131

Feedback 131



## PRODUCT INFORMATION

### Overview



---

You can find information about the individual products in the ew 500 P G4 series under “ew 500 P G4 series products”.

For information about the available accessories, see “Accessories”.

You can find information about the ew 500 P G4 series frequency bank system under “The frequency bank system”.

---



## ew 500 P G4 series products

Click the name of the particular product to learn more about it.



You can also find more information here:

- A variety of frequency variants are available from the individual products. You can find more information under “Product variants”.
- You can find technical specifications about the individual products under “Specifications”.
- You can find information about installing the products under “Installing ew 500 P G4 series devices”.
- You can find information about operating the products under “Using ew 500 P G4 series devices”.





## EK 500 G4 diversity receiver



You can find more detailed information about the EK 500 G4 in the following sections:

- Installation and Startup: “Installing the EK 500 G4”
- Operation: “Using the EK 500 G4”
- Technical Data: “EK 500 G4”



## SKM 500 G4 handheld transmitter



You can find more detailed information about the SKM 500 G4 in the following sections:

- Installation and Startup: “Installing the SKM 500 G4”
- Operation: “Using the SKM 500 G4”
- Technical Data: “SKM 500 G4”



## SK 500 G4 bodypack transmitter



You can find more detailed information about the SK 500 G4 in the following sections:

- Installation and Startup: “Installing the SK 500 G4”
- Operation: “Using the SK 500 G4”
- Technical Data: “SK 500 G4”



## SKP 500 G4 plug-on transmitter



You can find more detailed information about the SKP 500 G4 in the following sections:

- Installation and Startup: “Installing the SKP 500 G4”
- Operation: “Using the SKP 500 G4”
- Technical Data: “SKP 500 G4”



## Accessories

A variety of accessories are available for the ew 500 P G4 series.

### Microphones and cables

#### Microphone modules

We recommend using the following microphone modules with the SKM 500 G4 handheld transmitter.

Module	Features	Article no.
<b>MMD 835-1 BK</b>	Dynamic, cardioid, black	502575
<b>MMD 845-1 BK</b>	Dynamic, super-cardioid, black	502576
<b>MME 865-1 BK</b>	Capacitor, super-cardioid, black	502581
<b>MMD 935-1 BK</b>	Dynamic, cardioid, black	502577
<b>MMD 945-1 BK</b>	Dynamic, super-cardioid, black	502579
<b>MMK 965-1 BK</b>	Capacitor, switchable Cardioid/super-cardioid, black	502582
<b>MMK 965-1 NI</b>	Capacitor, switchable Cardioid/super-cardioid, nickel	502584
<b>MMD 42-1</b>	Dynamic, omni-directional, black	506772
<b>MD 9235 BK</b>	Dynamic, cardioid, black	502585
<b>MD 9235 NI</b>	Dynamic, cardioid, black	502586
<b>MD 9235 NI/BK</b>	Dynamic, cardioid, nickel/black	502591
<b>Neumann KK 204</b>	Capacitor, cardioid, nickel	008651
<b>Neumann KK 204 BK</b>	Capacitor, cardioid, black	008652
<b>Neumann KK 205</b>	Capacitor, super-cardioid, nickel	008653
<b>Neumann KK 205 BK</b>	Capacitor, super-cardioid, black	008654



You can find more information about the individual microphone modules on their respective product pages at [www.sennheiser.com](http://www.sennheiser.com).



### Headset and Lavalier microphones

We recommend using the following Lavalier microphones and headset microphones with the SK 500 G4 bodypack transmitter.

Microphone	Features	Article no.
<b>ME 2-II</b>	Lavalier microphone, omni-directional, black	507437
<b>ME 3-II</b>	Headset microphone, cardioid, black	506295
<b>ME 4-N</b>	Lavalier microphone, cardioid, black	005020
<b>MKE 1-ew</b>	Lavalier microphone, omni-directional, black	502876
<b>MKE 1-ew-3</b>	Lavalier microphone, omni-directional, beige	502879
<b>MKE 2-ew Gold</b>	Lavalier microphone, omni-directional, black	009831
<b>MKE 40-ew</b>	Lavalier microphone, cardioid, black	500527
<b>SL Headmic 1 BE</b>	Headband microphone, omni-directional, beige	506272
<b>SL Headmic 1 BK</b>	Headband microphone, omni-directional, black	506271
<b>SL Headmic 1 SB</b>	Headband microphone, omni-directional, silver	506904

**i** You can find more information about the individual microphones on their respective product pages at [www.sennheiser.com](http://www.sennheiser.com).

### Line connecting cable

The following cables can be used to connect cameras to the EK 500 G4 diversity receiver:

- **CL 1**  
3.5 mm jack plug on lockable 3.5 mm jack plugs  
Article no. 005022
- **CL 500**  
XLR-3 on a 3.5 mm jack plug  
Article no.



## Rechargeable battery and charger

### BA 2015 rechargeable battery

The BA 2015 rechargeable battery is designed for use with evolution wireless G4 series handheld transmitters, bodypack transmitters and bodypack receivers.

Article no. 009950



### L 2015 charger

The BA 2015 rechargeable battery can be charged in the L 2015 charger on its own or inside of the bodypack transmitter/bodypack receiver.

Article no. 009828





## Accessories for camera mounting

### CA 2 camera adapter

Camera adapter with hot shoe for portable receivers from the ew 100 P G4 and ew 500 PG4 series.

Article no. 009986







## Additional accessories

### Color labeling set

- **KEN 2**, color labeling set for SKM handheld transmitters  
Article no. 530195



### Microphone clamp

- **MZQ 1**, microphone clamp for SKM handheld transmitters  
Article no. 076670





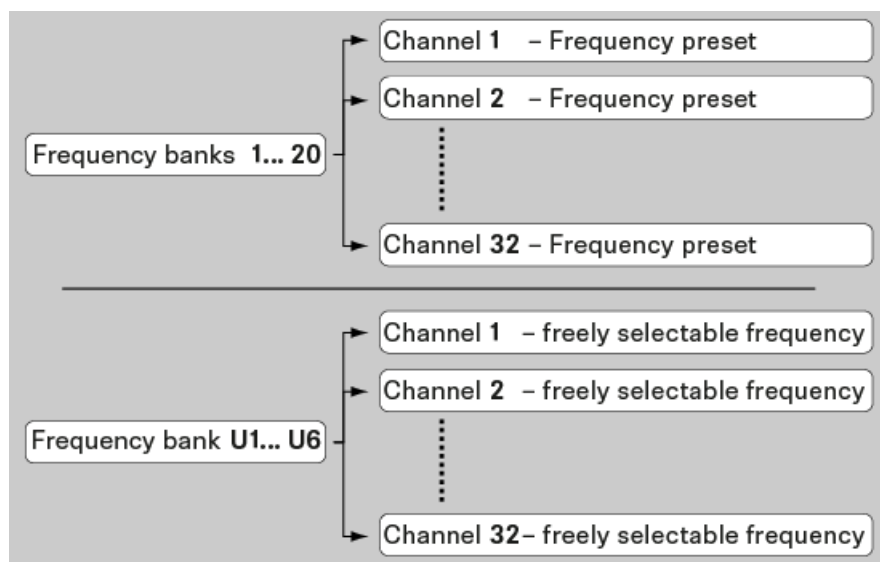
## The frequency bank system

There are different frequency ranges in the UHF band available for transmission.

The following frequency ranges are available for the ew **500 P G4** series:

- **Aw+ range:** 470 – 558 MHz
- **AS range:** 520 – 558 MHz
- **Gw1 range:** 558 – 608 MHz
- **Gw range:** 558 – 626 MHz
- **GBw range:** 606 – 678 MHz
- **Bw range:** 526 – 698 MHz
- **Cw range:** 718 – 790 MHz
- **Dw range:** 790 – 865 MHz
- **JB range:** 806 – 810 MHz
- **K+ range:** 925 – 937.5 MHz

Every frequency range has **26 frequency banks** with up to 32 channels:




---

**i** You can find information about the frequency presets in the frequency tables of the respective frequency ranges under “Frequency tables”.

---



## INSTALLATION

### Installing ew 500 P G4 series devices

You can find information about installing and connecting ew 500 P G4 series devices in the following sections.



- EK 500 G4 diversity receiver >> “Installing the EK 500 G4”



- SKM 500 G4 handheld transmitter >> “Installing the SKM 500 G4”



- **SK 500 G4** bodypack transmitter >> “Installing the SK 500 G4”



- SKP 500 G4 plug-on transmitter >> “Installing the SKP 500 G4”



You can find information about **operating** the products under “Installing ew 500 P G4 series devices”.



## Installing the EK 500 G4

These sections contain detailed information about installing the EK 500 G4.

You can find information about operating the EK 500 G4 under “Using the EK 500 G4”.

### Inserting and removing the batteries/rechargeable batteries

You can operate the diversity receiver either with batteries (AA, 1.5 V) or with the rechargeable Sennheiser BA 2015 battery.

- ▷ Press the two catches and open the battery compartment cover.
- ▷ Insert the batteries or the rechargeable battery as shown below. Please observe correct polarity when inserting the batteries.











- ▷ Close the battery compartment.
- ▷ The cover locks into place with an audible click.



### Battery status

Charge status of the batteries:

	100 %	> 8 h
	70 %	4 - 6 h
	30 %	2 - 3 h
LOW BATT 	  	

Charge status is critical (LOW BATT):





## Connecting headphones to the EK 500 G4

---

### ATTENTION



#### Danger due to high volume levels

Volume levels that are too high may damage your hearing.

- ▷ Turn down the volume of the headphone output before you put on the headphone.

---

To connect the headphones to the receiver:

- ▷ Insert the cable's 3.5 mm jack plug into the **PHONES** socket on the receiver as shown in the diagram.
- ▷ Screw the plug's coupling ring onto the audio socket thread of the receiver if needed.



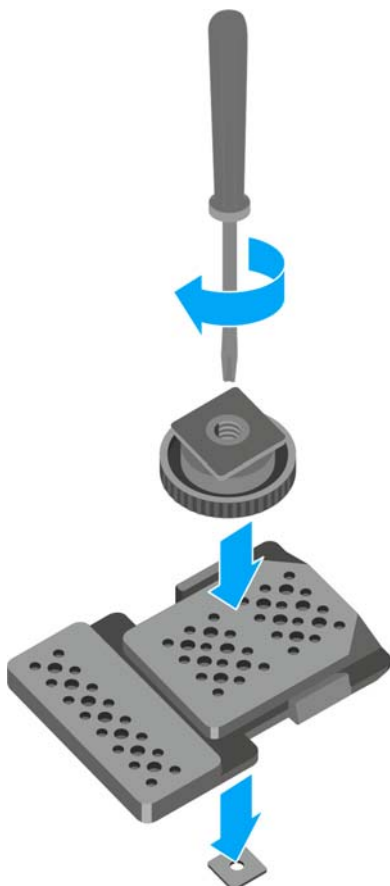


## Attaching the diversity receiver to a camera

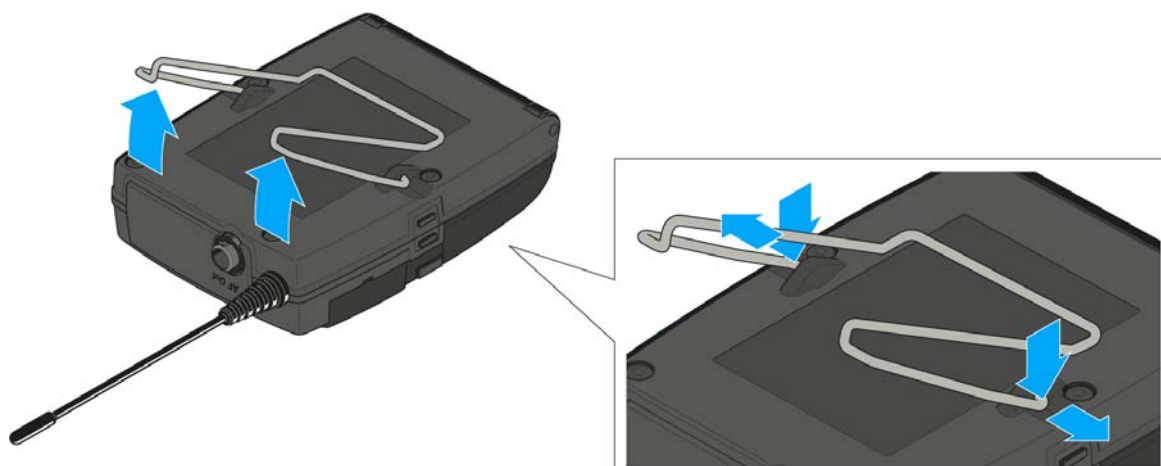
You can attach the diversity receiver on the hot shoe of the camera with the included CA 2 camera kit.

To attach the EK 500 G4 diversity receiver to a camera:

- ▷ Determine where on the perforated plate you need to attach the hot shoe adapter so that the diversity receiver can be optimally attached to the camera.
- ▷ Place a square nut under the perforated plate at this position.
- ▷ Affix the hot shoe adapter to the perforated plate with the square nut.

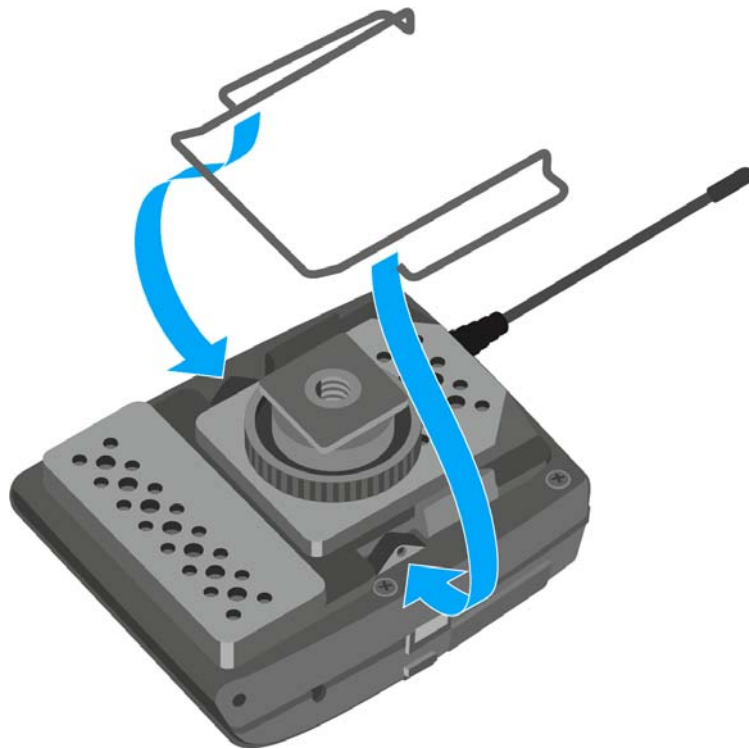


- ▷ Lift the belt clip.
- ▷ Press one side of the clip downward on the fixing hole and pull it out of the housing.
- ▷ Do the same thing on the other side.



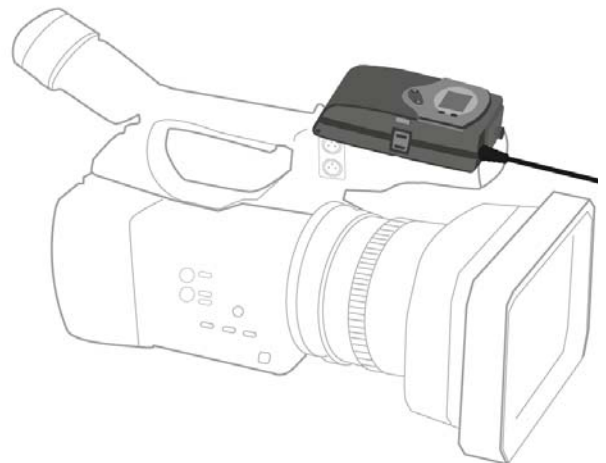


- ▷ Place the perforated plate on the rear side of the diversity receiver.
- ▷ Reattach the clip.



- ▷ Slide the receiver onto a camera.

◀ OR ▶







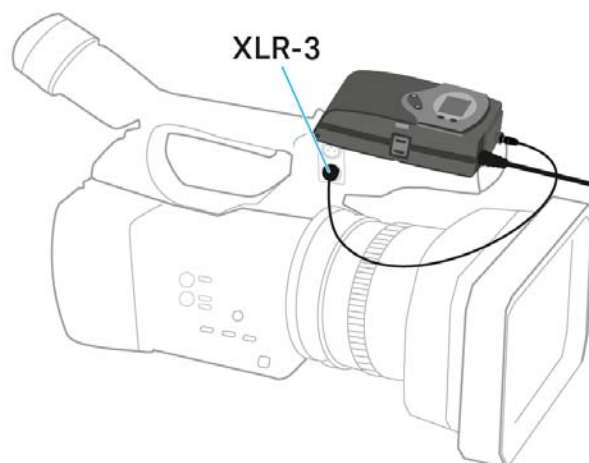
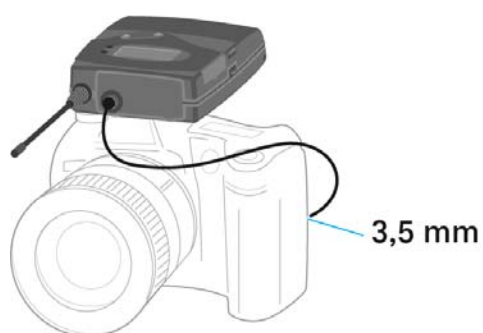
## Connecting the diversity receiver to a camera

To connect the diversity receiver to a camera:

- ▷ Attach the line input of the camera to the jack socket of the receiver using one of the enclosed line connecting cables.



◀ OR ▶



- ▷ Adjust the level of the **AF Out** audio output in the operating menu of the diversity receiver based on the input level of the camera (see “AF Out menu item”).

**i** The shielding of the line cable acts as an antenna for the second diversity branch. For details on the pin assignment, see “Pin assignment”.



## Installing the SKM 500 G4

These sections contain detailed information about installing and starting up the SKM 500 G4.

You can find information about operating the SKM 500 G4 under “Using the SKM 500 G4”.

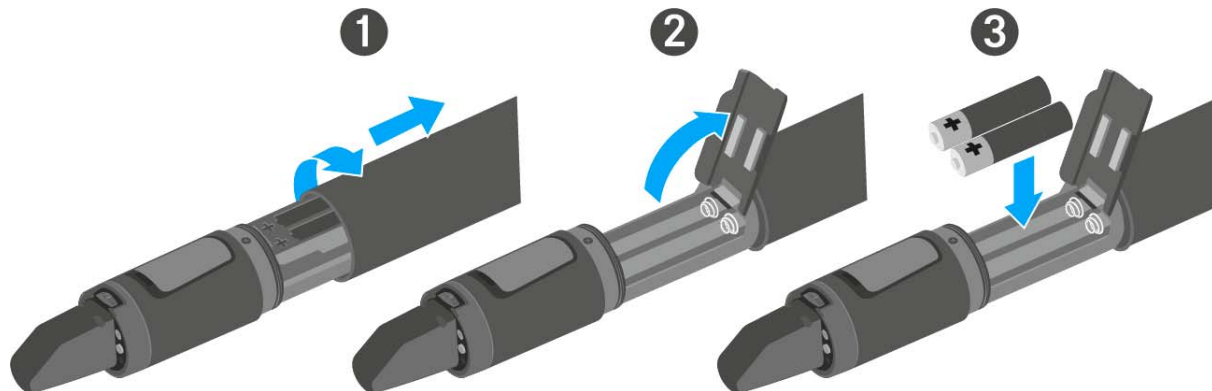
### Inserting and removing the batteries/rechargeable batteries

You can operate the wireless microphone either with batteries (AA, 1.5 V) or with the rechargeable Sennheiser BA 2015 battery.

- ▷ Screw the rear part of the wireless microphone in the direction of the arrow (counter-clockwise) off of the handle of the wireless microphone.

**i** When you remove the wireless microphone during operation, mute is automatically activated. **MUTE** appears in the display panel. When you screw the microphone back together, mute is deactivated.

- ▷ Pull the rear part of the wireless microphone all the way out.
- ▷ Open the cover of the battery compartment.
- ▷ Place the batteries or the BA 2015 rechargeable battery in the battery compartment as shown on the cover. Please observe correct polarity when inserting the batteries/accupack.



- ▷ Close the cover.
- ▷ Push the battery compartment into the handle of the wireless microphone.
- ▷ Screw the rear part of the wireless microphone back onto the handle.

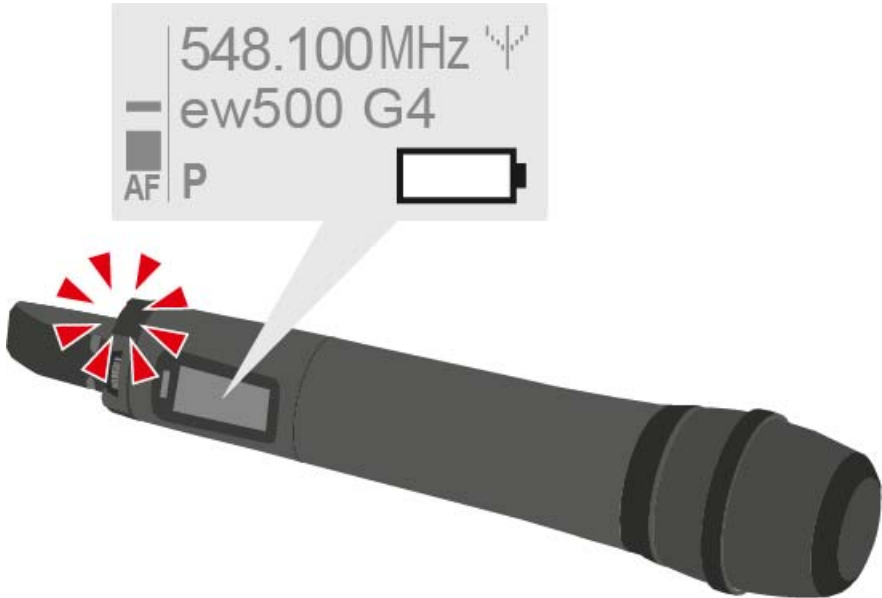


**Battery status**

Charge status of the batteries:

	100 %	> 8 h
	70 %	4 - 6 h
	30 %	2 - 3 h
LOW BATT		

Charge status is critical (LOW BATT):



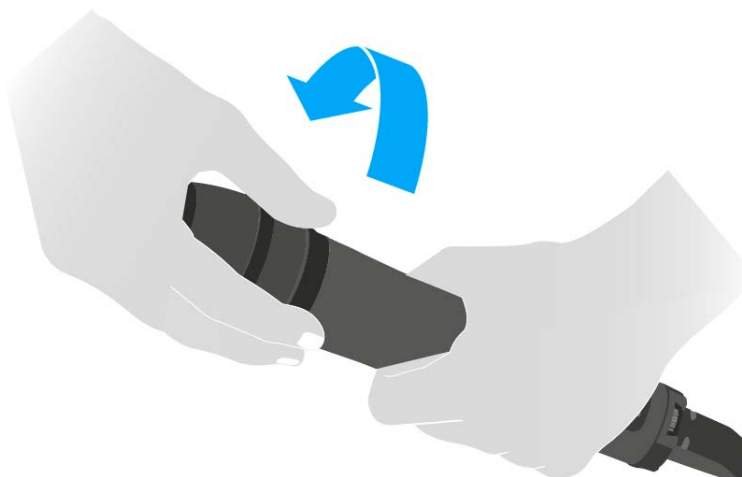


## Replacing the microphone module

You can find a list of the recommended microphone modules for the handheld transmitter under “Microphones and cables”.

To change the microphone module:

- ▷ Unscrew the microphone module.
- ▷ Screw the desired microphone module on.




---

**i** Do not touch the wireless microphone contacts or the microphone module contacts. If you touch the contacts, they may become dirty or bent.

When you unscrew the microphone module during operation, mute is automatically activated. **MUTE** appears in the display panel. When you screw the microphone module back on, mute is deactivated.

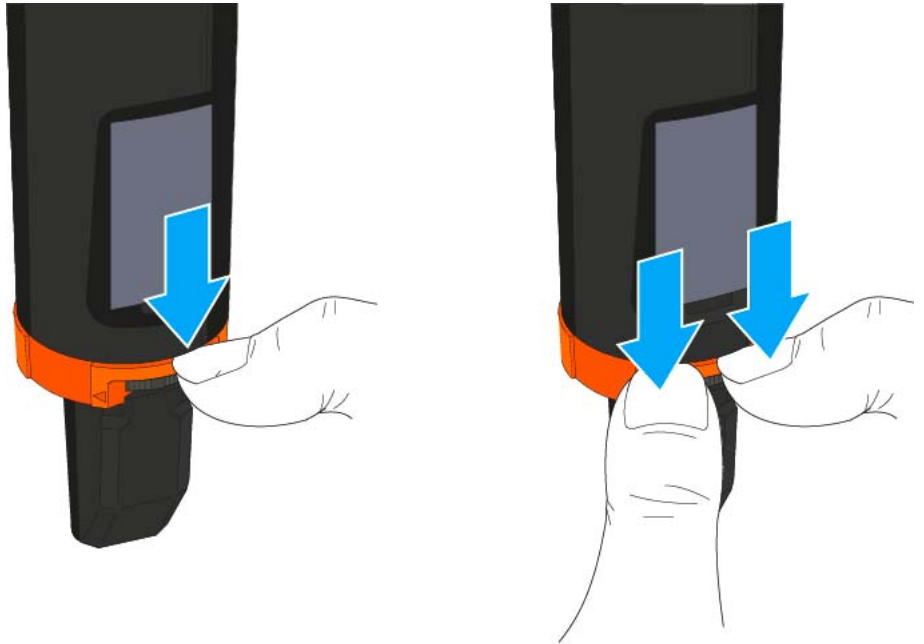
---



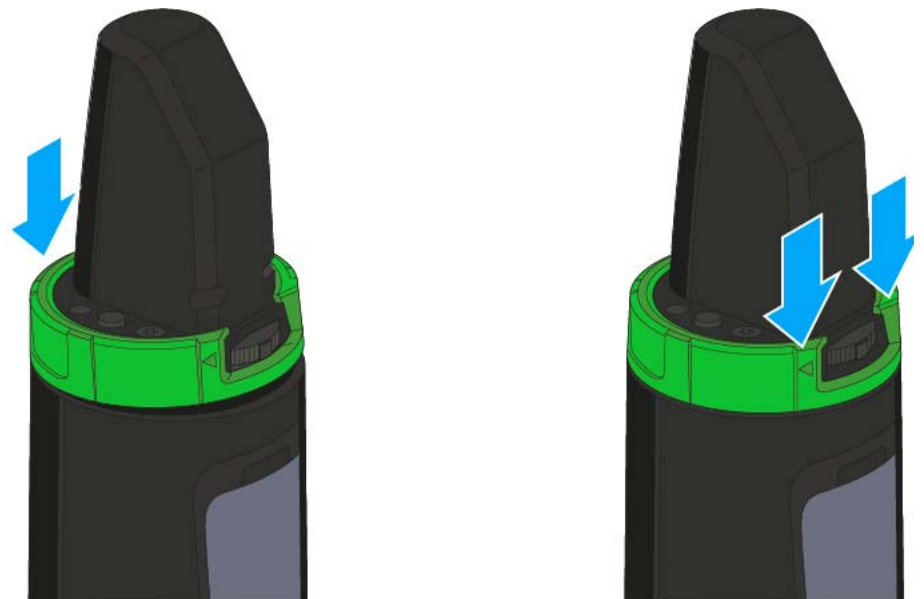
## Changing the colored ring

To change the colored ring:

- ▷ Pull the colored ring off as shown in the diagram.



- ▷ Attached a colored ring in the color you want as shown in the diagram.





## Installing the SK 500 G4

These sections contain detailed information about installing and starting up the SK 500 G4.

You can find information about operating the SK 500 G4 under “Using the SK 500 G4”.

### Inserting and removing the batteries/rechargeable batteries

You can operate the bodypack transmitter either with batteries (AA, 1.5 V) or with the rechargeable Sennheiser BA 2015 battery.

- ▷ Press the two catches and open the battery compartment cover.
- ▷ Insert the batteries or the rechargeable battery as shown below. Please observe correct polarity when inserting the batteries.








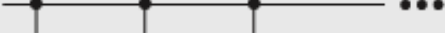


- ▷ Close the battery compartment.  
The cover locks into place with an audible click.



### Battery status

Charge status of the batteries:

	100 %	> 8 h
	70 %	4 - 6 h
	30 %	2 - 3 h
LOW BATT 	  	

Charge status is critical (LOW BATT):





## Connecting a microphone to the SK 500 G4

You can find a list of recommended Lavalier and headset microphones for the bodypack transmitter under “Microphones and cables”.

To connect a microphone to the bodypack transmitter:

- ▷ Insert the cable's 3.5 mm jack plug into the **MIC/LINE** socket on the bodypack transmitter as shown in the diagram.
- ▷ Screw the plug's coupling ring onto the audio socket thread of the bodypack transmitter.







## Connecting an instrument or line source to the SK 500 G4

You can connect instruments or audio sources with a line level to the bodypack transmitter.

To do this, you will need the **Ci 1-N** (6.3 mm jack plug on a lockable 3.5 mm jack plug) or **CL 2** (XLR-3F plug on lockable 3.5 mm jack plug) Sennheiser cables.

To connect an instrument or line source to bodypack transmitter:

- ▷ Insert the cable's 3.5 mm jack plug into the **MIC/LINE** socket on the bodypack transmitter as shown in the diagram.
- ▷ Screw the plug's coupling ring onto the audio socket thread of the bodypack transmitter.





## Attaching the bodypack transmitter to clothing

You can use the belt clip to attach the bodypack transmitter to your waistband or on a guitar strap.

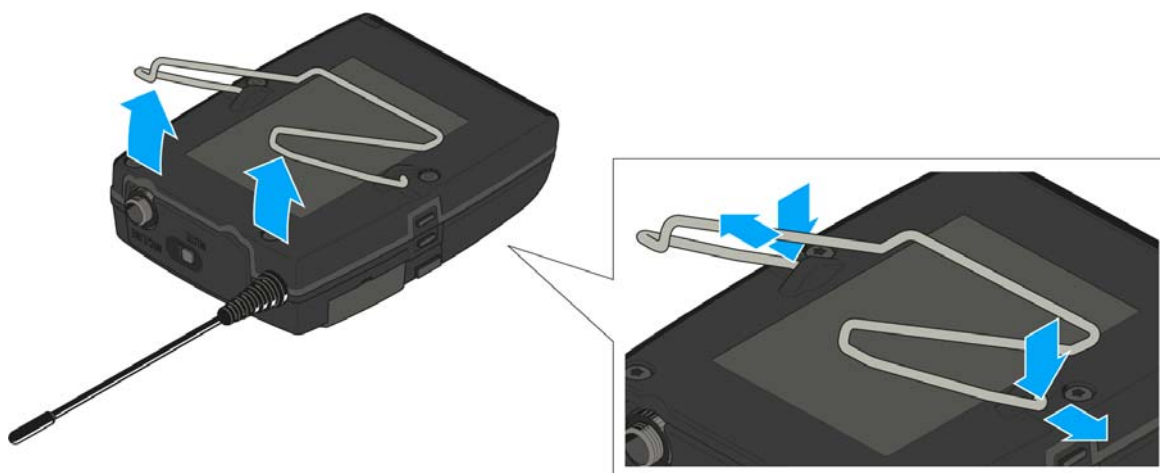
The belt clip is detachable so that you can also attach the bodypack transmitter with the antenna pointing downwards. To do so, withdraw the belt clip from its fixing points and attach it the other way round.

The belt clip is secured so that it cannot slide out of its fixing points accidentally.



To detach the belt clip:

- ▷ Lift the belt clip as shown in the diagram.
- ▷ Press one side of the clip downward on the fixing hole and pull it out of the transmitter housing.
- ▷ Do the same thing on the other side.





## Installing the SKP 500 G4

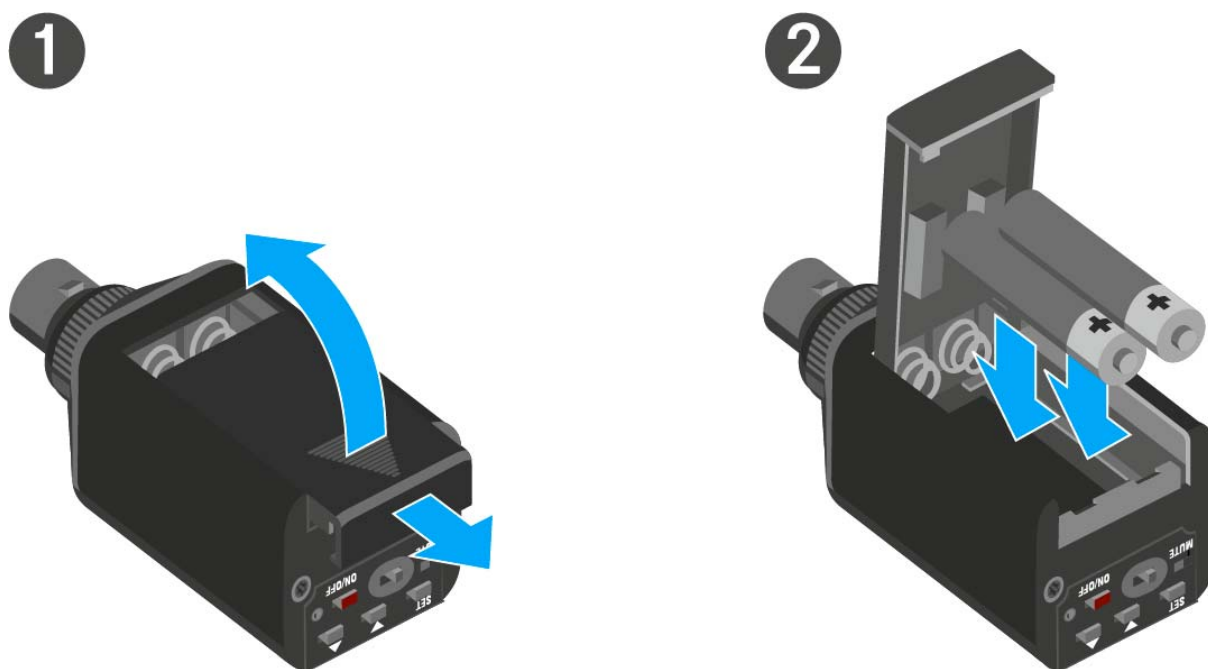
These sections contain detailed information about installing and starting up the SKP 500 G4.

You can find information about operating the SKP 500 G4 under “Using the SKP 500 G4”.

### Inserting and removing the batteries/rechargeable batteries

You can operate the plug-on transmitter either with batteries (AA, 1.5 V) or with the rechargeable Sennheiser BA 2015 battery.

- ▷ Slide the battery compartment cover in the direction of the embossed arrow and open the cover.
- ▷ Insert the batteries or the accupack as shown below. Please observe correct polarity when inserting the batteries/accupack.



- ▷ Close the battery compartment.  
The cover locks into place with an audible click.



### Battery status

Charge status of the batteries:

	100 %	> 8 h
	70 %	4 - 6 h
	30 %	2 - 3 h
LOW BATT 		

Charge status is critical (LOW BATT):

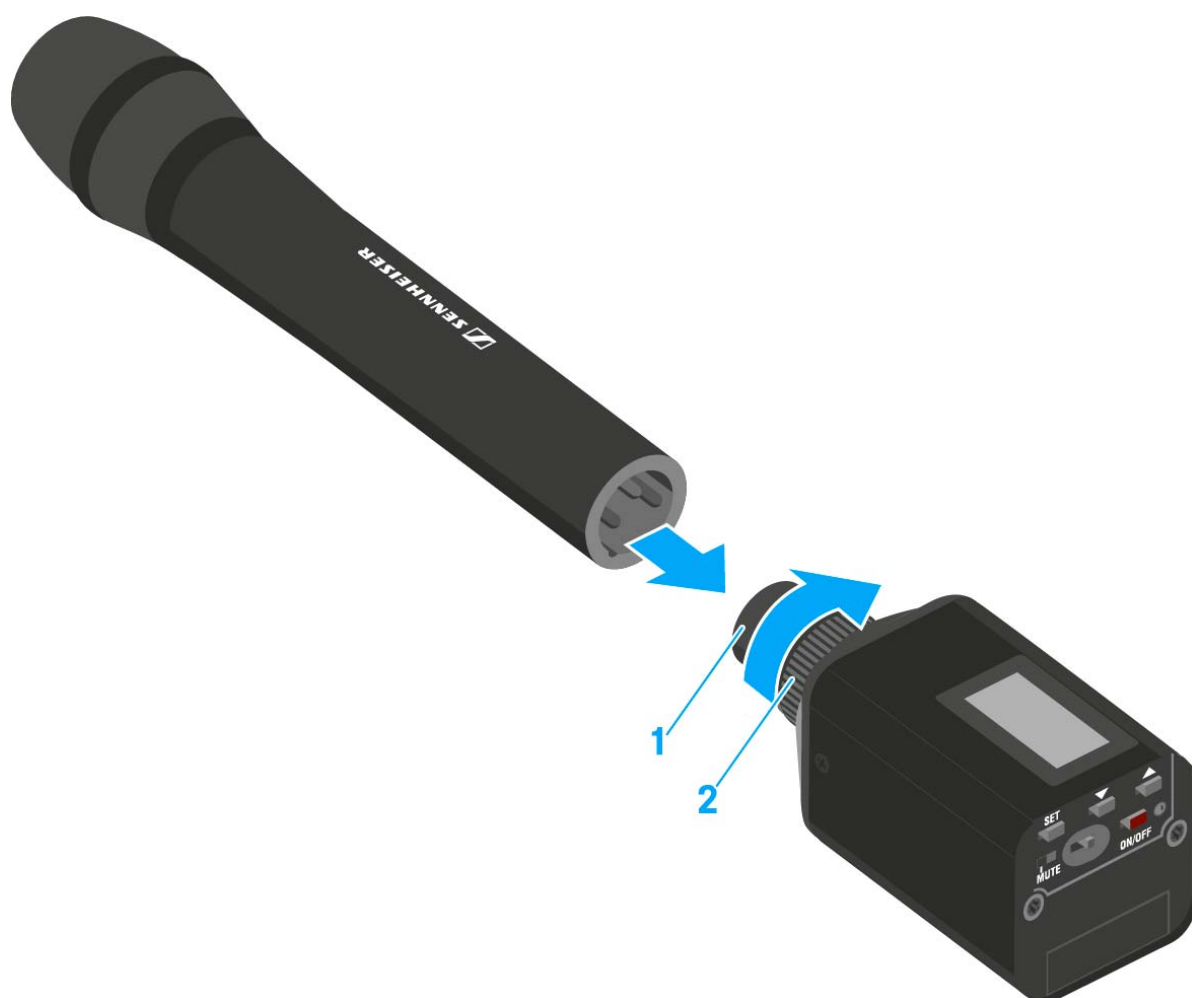




## Attaching the plug-on transmitter to the microphone

**i** Microphones with a metal casing should be used for optimal signal transmission.

- ▷ Loosen the locking ring (2) by rotating it in the clockwise direction past the center point.  
This unlocks the XLR-3 plug (1) of the plug-on transmitter.
- ▷ Connect the plug-on transmitter's XLR-3 plug (1) to the XLR-3 socket of the microphone.
- ▷ Tighten the locking ring (2) by rotating it counter-clockwise in the direction of the arrow.





## OPERATION

### Using ew 500 P G4 series devices

You can find information about using ew 500 P G4 series devices in the following sections.



- **EK 500 G3** diversity receiver >> “Using the EK 500 G4”



- **SKM 500 G3** handheld transmitter >> “Using the SKM 500 G4”



- **SK 500 G3** bodypack transmitter >> “Using the SK 500 G4”



- **SKP 500 G3** plug-on transmitter >> “Using the SKP 500 G4”

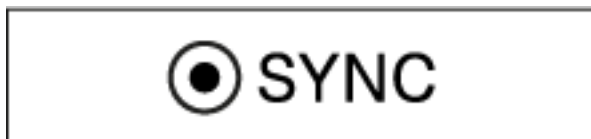
**i** You can find information about **installing** the products under “Installing ew 500 P G4 series devices”.



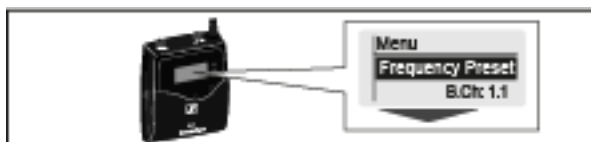
In the sections below, you can find important **information about specific use cases**.



- Establishing a **radio link** between the transmitter and receiver >> “Establishing a radio link”



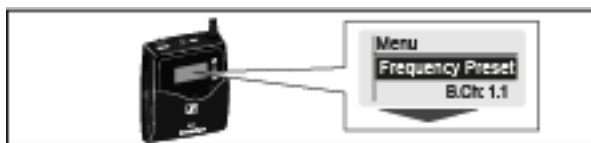
- **Synchronizing** the receiver **settings** to the transmitter >> “Synchronizing devices”



- Using the **menu** of the diversity **receiver** >> “Displays on the EK 500 G4 display panel”



- Using the **menu** of the **handheld transmitter** >> “Displays on the SKM 500 G4 handheld transmitter display panel”



- Using the **menu** of the **bodypack transmitter** >> “Displays on the SK 500 G4 bodypack transmitter display panel”



- Using the menu of the **plug-on transmitter** >> “Displays on the SKP 500 G4 plug-on transmitter display panel”

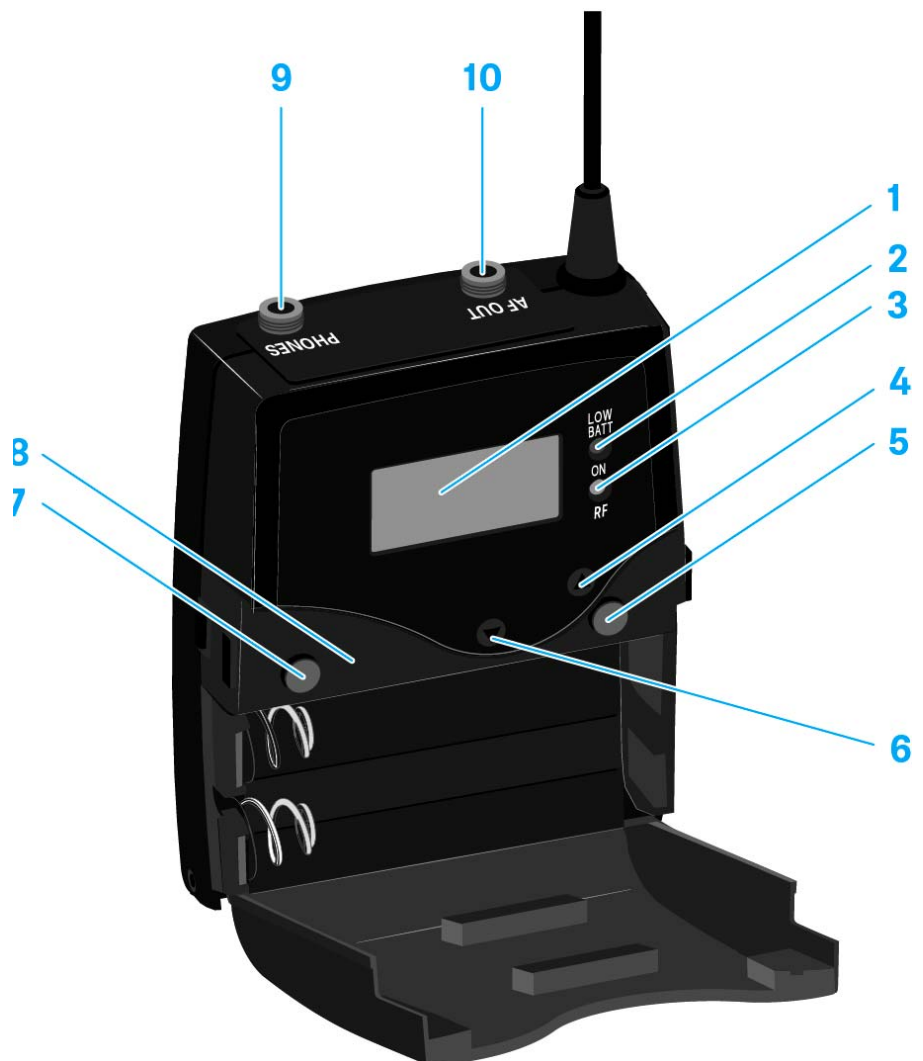


## Using the EK 500 G4

These sections contain detailed information about using the EK 500 G4.

You can find information about installing the EK 500 under “Using the EK 500 G4”.

### Operating elements of the EK 500 G4 diversity receiver



- 1** Display panel
  - See “Displays on the EK 500 G4 display panel”
- 2** Operation and battery indicator, red LED
  - illuminated = ON  
See “Switching the EK 500 G4 on and off”
  - flashing = LOW BATTERY  
See “Inserting and removing the batteries/rechargeable batteries”
- 3** Wireless reception indicator, green LED
  - illuminated = RF





- 4 UP** button
  - See “Buttons for navigating through the menu”
- 5 SET** button
  - See “Buttons for navigating through the menu”
- 6 DOWN** button
  - See “Buttons for navigating through the menu”
- 7 ON/OFF** button with ESC function in the operating menu
  - Switch the transmitter on or off  
See “Switching the EK 500 G4 on and off”
  - Escape function in the menu  
See “Buttons for navigating through the menu”
- 8** Infra-red interface
  - See “Synchronizing devices”
- 9** 3.5 mm jack socket **PHONES**
  - See “Connecting headphones to the EK 500 G4”
  - See “Volume control of the PHONES socket”
- 10** 3.5 mm jack socket **AF OUT**
  - lockable  
See “Connecting the diversity receiver to a camera”

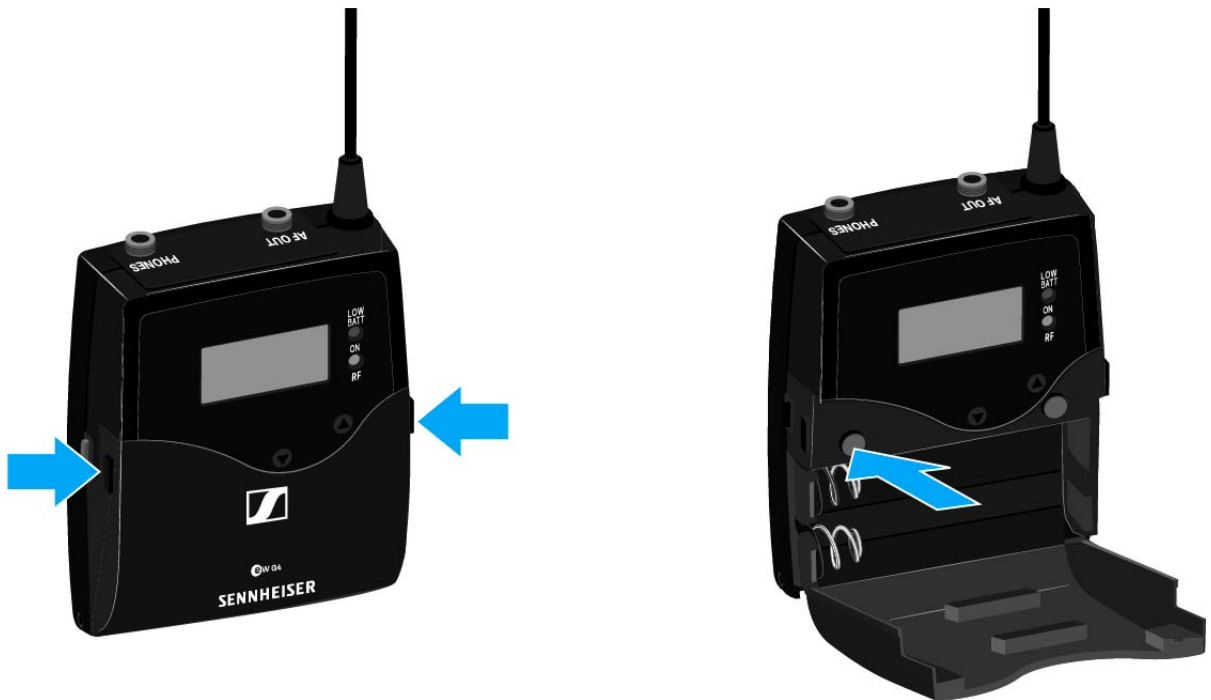


## Switching the EK 500 G4 on and off

- ▷ Press the two catches and open the battery compartment cover.

To switch the receiver on:

- ▷ Hold down the **ON/OFF** button until the Sennheiser logo appears on the display.



To switch the receiver off:

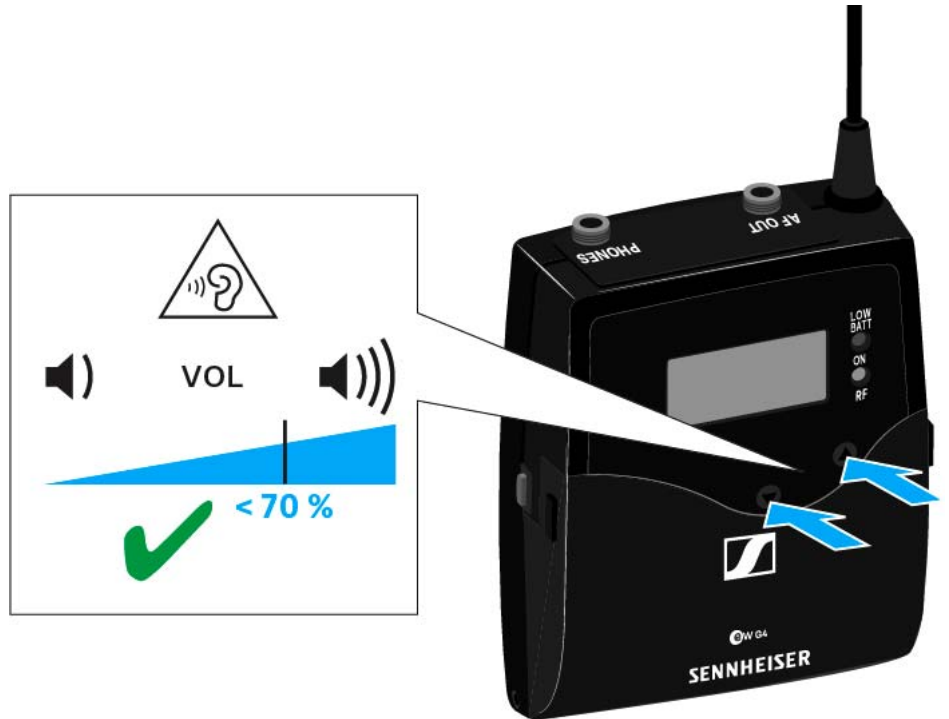
- ▷ Hold down the **ON/OFF** button until the display goes off.



## Volume control of the PHONES socket

To adjust the volume of the connected headphone:

- ▶ Press the **UP** or **DOWN** buttons.





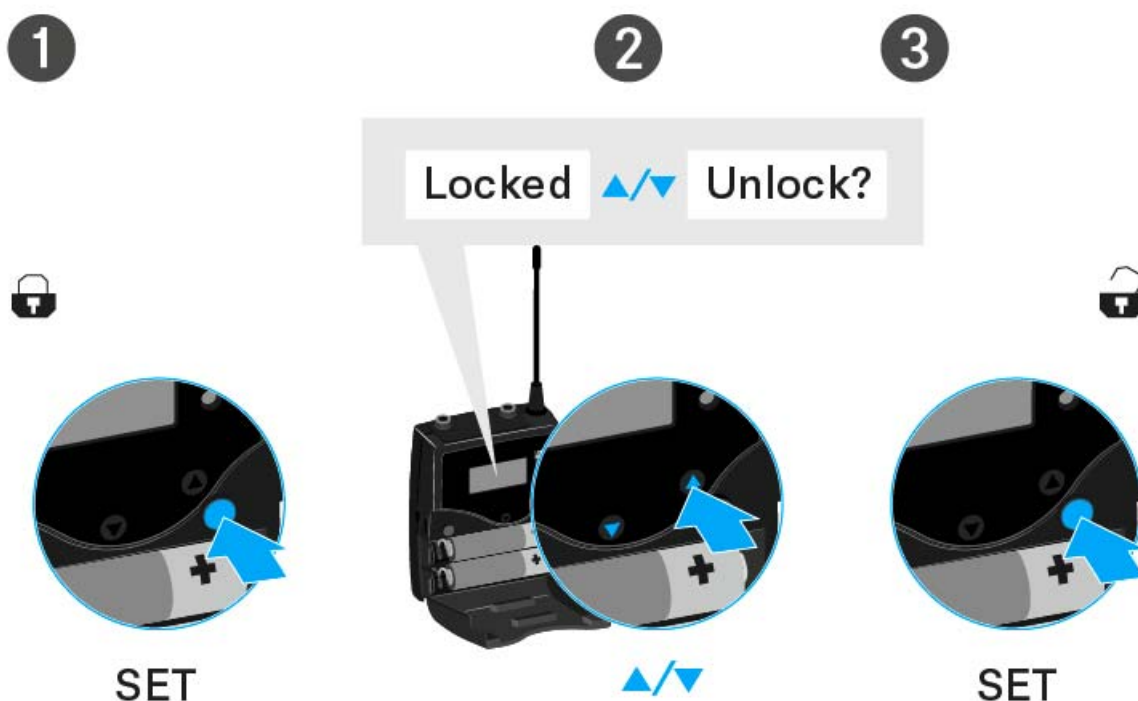
## Lock-off function

You can set the automatic lock-off function in the **Auto lock** menu (see “Auto Lock menu item”).

When you have switched on the lock-off function, you will have to turn the transmitter off and on again in order to operate it.

To temporarily deactivate the lock-off function:

- ▷ Press the **SET** button.  
Locked appears in the display panel.
- ▷ Press the **UP** or **DOWN** button.  
Unlock? appears in the display panel.
- ▷ Press the **SET** button.  
Lock-off function is now temporarily deactivated.



### When you are in the operating menu

>> Lock-off function is deactivated long enough for you to work in the operating menu.

### When one of the standard displays is shown

>> Lock-off function is automatically activated after 10 seconds.

The lock-off function icon flashes while lock-off function is being activated again.



## Displays on the EK 500 G4 display panel

---

**Status information** such as reception quality, battery status, audio level, etc. is displayed on the **home screen** of the display panel. See “Home screen”.

---

The display panel also displays the **operating menu** which you can use to configure all of the **settings**. See “Setting options in the menu”.

---

## Buttons for navigating through the menu

To navigate through the EK 500 G4 operating menu, you need the following buttons.



### ON/OFF



Press the **ON/OFF** button

- ESC function: Cancels the entry and returns to the current standard display
- Selects a standard display (see “Home screen”)



---

**SET**

Press the **SET** button

- Changes from the current standard display to the operating menu
  - Calls up a menu item
  - Changes to a submenu
  - Stores the settings and returns to the operating menu
- 



Press the **UP** or **DOWN** button

- Changes to the previous or next menu item
  - Changes the setting of a menu item
-



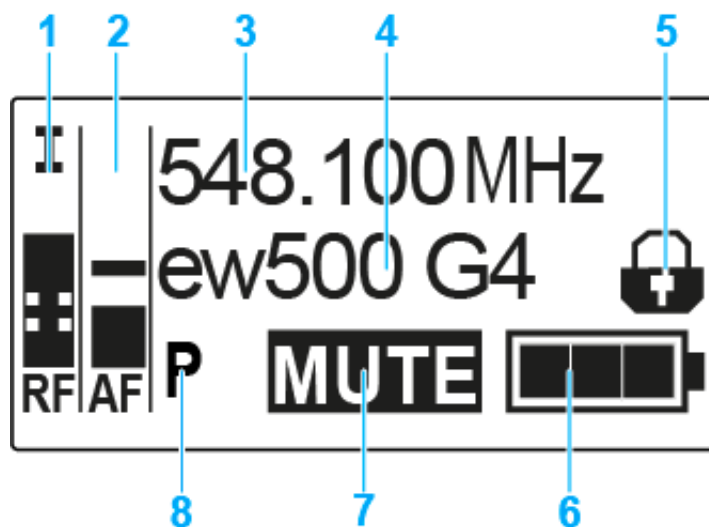
## Home screen

After you switch on the receiver, the display panel initially displays the Sennheiser logo. After a short time, the home screen is then displayed.

The home screen has two different standard displays.

- ▷ Short-press the **ON/OFF** button to switch between the standard displays.

### Frequency/Name standard display



- 1** RF level (radio frequency)
  - RF signal level display
  - including the display of the squelch threshold (see “Squelch menu item”)
- 2** AF audio level (audio frequency)
  - Displays the audio level of the received transmitter
  - When the display shows full deflection, the audio input level is excessively high.
  - See “AF Out menu item”
- 3** Frequency
  - Current receiving frequency
  - See “Frequency Preset menu item”
- 4** Name
  - Freely selectable name of the receiver
  - See “Name menu item”
- 5** Lock-off function
  - Lock-off function is activated on the receiver
  - See “Lock-off function”
- 6** Battery status of the receiver
  - See “Inserting and removing the batteries/rechargeable batteries”
- 7** **MUTE** muting function
  - No RF signal received

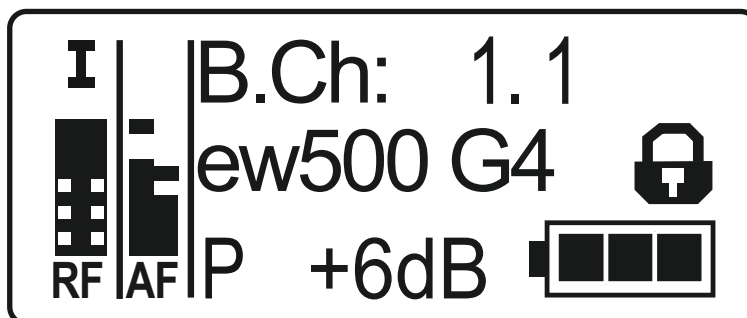


### 8 P pilot tone

- P = Activated pilot tone evaluation
- No symbol = Evaluation is deactivated
- P is black = Pilot tone is being received on the current frequency
- See “Advanced -> Pilot Tone menu item”

### Frequency Bank/Channel/Name standard display

The Frequency Bank/Channel/Name standard display shows the level of the line output **AF Out** instead of the **MUTE** muting function.







## Setting options in the menu

In the EK 500 G4 menu, you can configure the following settings.

### **Synchronizing the transmitter with the diversity receiver**

- ▷ See “Sync menu item”
- 

### **Adjusting the volume of the headphone socket**

- ▷ See “Phones Volume menu item”
- 

### **Adjusting the squelch threshold**

- ▷ See “Squelch menu item”
- 

### **Scanning for unused frequency presets, releases and selects frequency presets**

- ▷ See “Easy Setup menu item”
- 

### **Setting the frequency bank and the channel**

- ▷ See “Frequency Preset menu item”
- 

### **Entering a freely selectable name**

- ▷ See “Name menu item”
- 

### **Adjusting the audio output level**

- ▷ See “AF Out menu item”
- 

### **Activate/deactivate the automatic lock-off function**

- ▷ See “Auto Lock menu item”
- 

### **Configuring enhanced settings in the [Advanced Menu](#):**

- Adjusting the receiving frequencies for the U frequency bank
- Activating/deactivating the parameters to be transferred to the transmitters
- Activating/deactivating the pilot tone evaluation
- Adjusting the contrast of the display panel
- Resetting the receiver

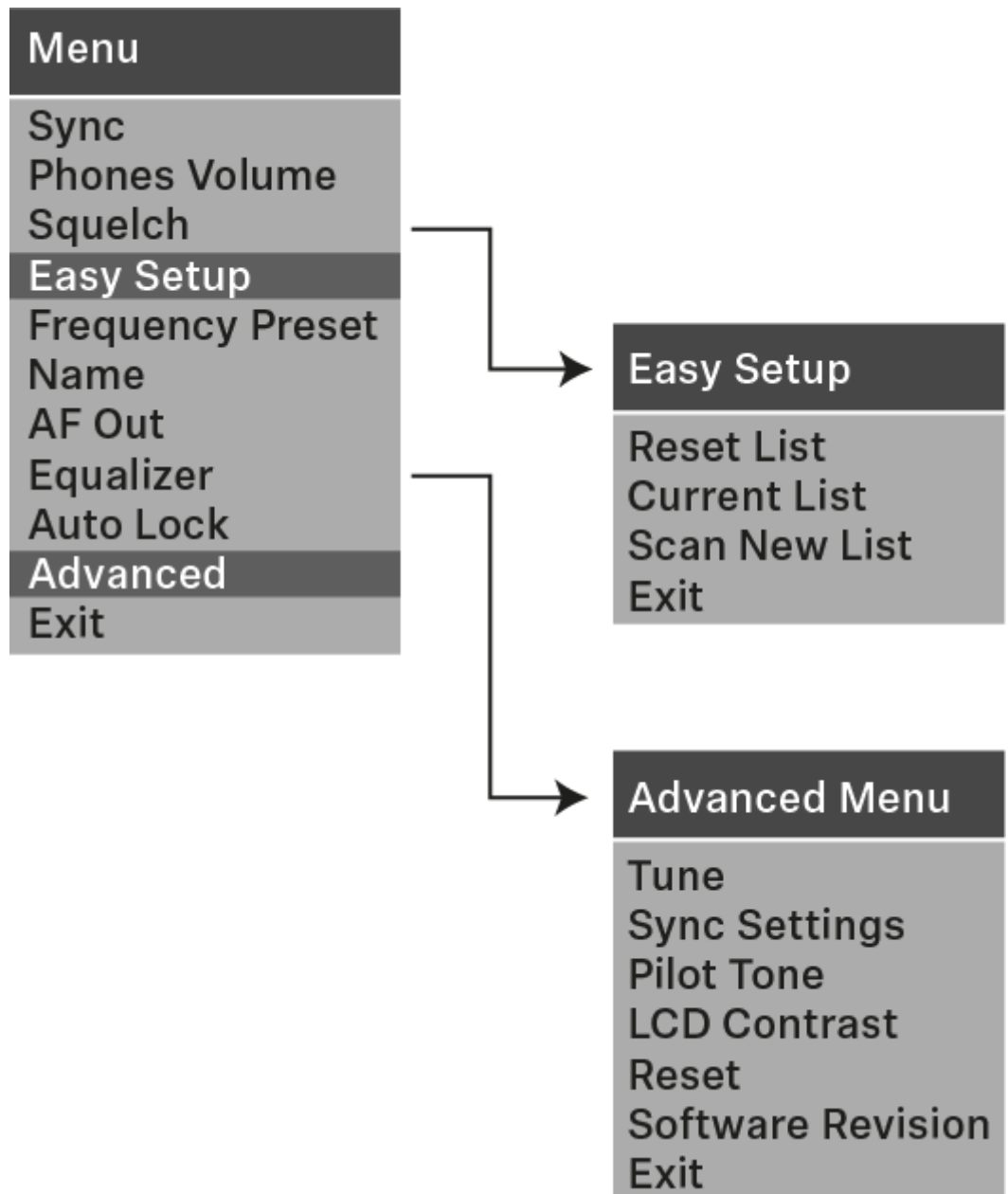


- Displaying the current software revision
    - ▷ See “Advanced menu item”
-



## Menu structure

The figure shows the complete EK 500 G4 menu structure in an overview.





## Sync menu item

In the **Sync** menu item you can synchronize ew 500 P G4 series transmitters and receivers.



For more information, see “Synchronizing devices”.

## Phones Volume menu item

In the Phones Volume menu item you can adjust the volume for the headphone output.

Setting range: 1 to 5

You can also adjust the headphone volume in the standard display with the **UP** and **DOWN** buttons. See “Volume control of the PHONES socket”.



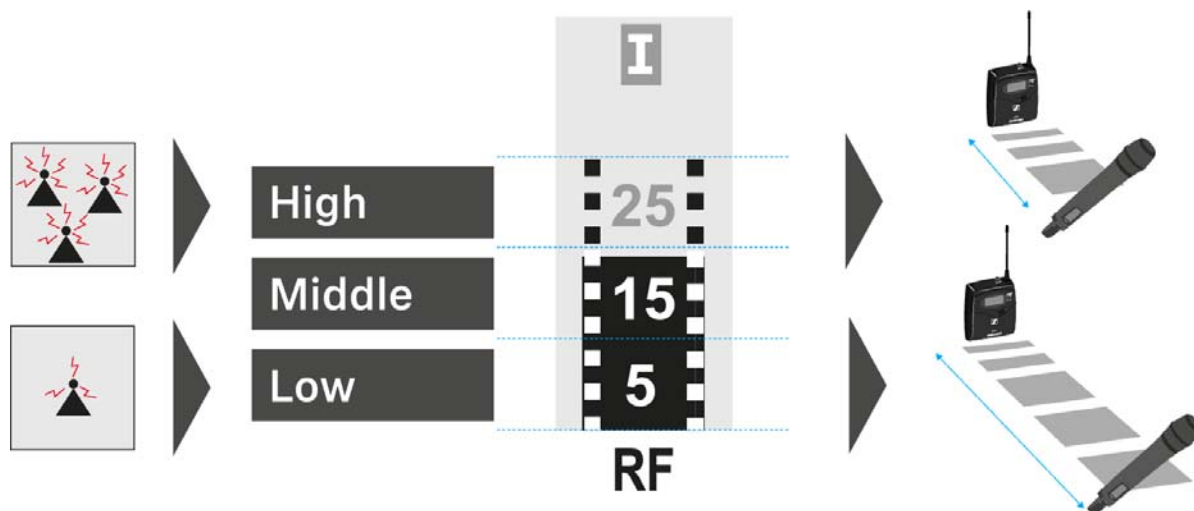
## Squelch menu item

You can adjust the squelch threshold in the **Squelch** menu item.

### Setting range:

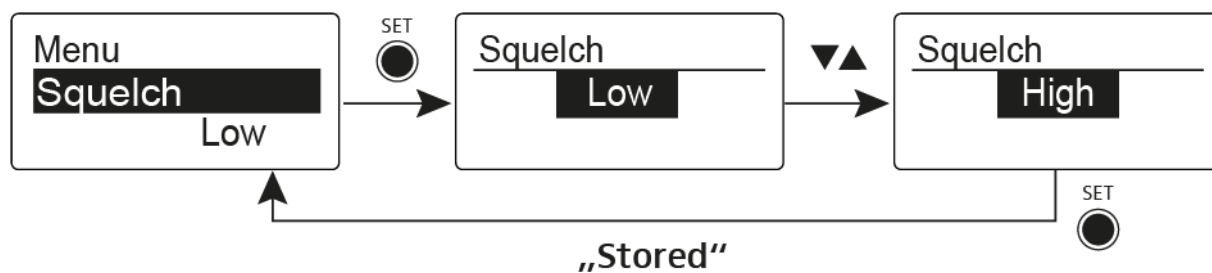
- **Low** >> 5 dB $\mu$ V
- **Middle** >> 15 dB $\mu$ V
- **High** >> 25 dB $\mu$ V

The squelch threshold is displayed on the home screen in the RF signal level area.



To open the **Squelch** menu item:

- ▷ On the home screen, press the **SET** button to open the operating menu.
- ▷ Press the **UP** or **DOWN** button until the **Squelch** menu item appears in the selection frame.
- ▷ Press the **SET** button to open the menu item.
- ▷ Adjust the settings as desired.



- ▷ Press the **SET** button to save the changes you made to the settings.  
or
- ▷ Press the **ON/OFF** button to cancel the entry without saving the settings.



---

**CAUTION****Risk of hearing and material damage**

If you set the squelch threshold to a very low value, a very loud hissing noise can occur in the receiver. This hissing noise can be loud enough to cause hearing damage or overload your system's loudspeakers.

- ▷ Before adjusting the squelch threshold, set the volume of the audio output to the minimum.
  - ▷ Never change the squelch threshold during a live transmission.
-



## Easy Setup menu item

You can scan for unused frequencies using the **Easy Setup** menu item.

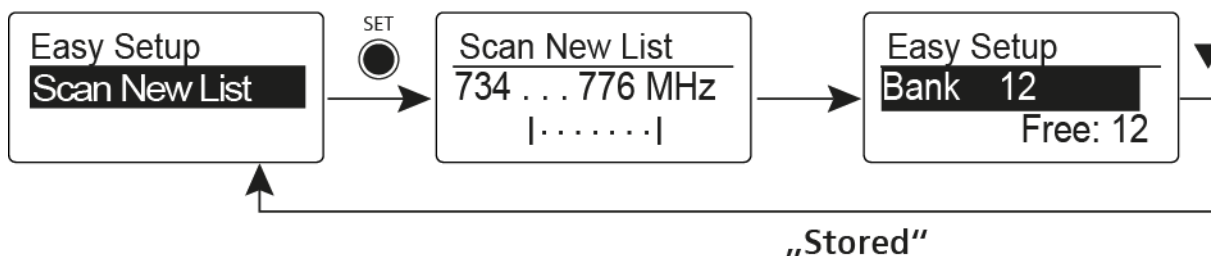


Switch off all transmitters before you perform the scan. If transmitters are still switched on, they are detected as unavailable frequencies and the frequencies that are actually available cannot then be used.

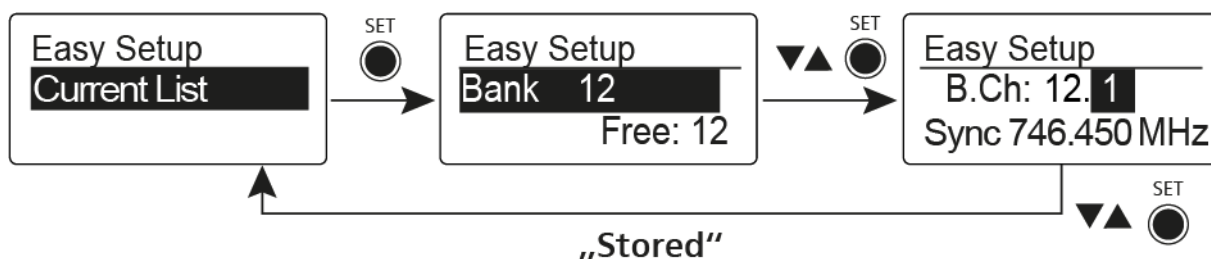
To open the **Easy Setup** menu item:

- ▷ On the home screen, press the **SET** button to open the operating menu.
- ▷ Press the **UP** or **DOWN** button until the **Easy Setup** menu item appears in the selection frame.
- ▷ Press the **SET** button to open the menu item.
- ▷ Adjust the settings as desired.

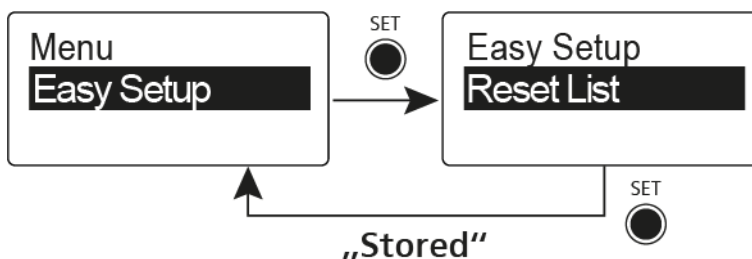
- **Scan New List:** Automatically searches for unused receiving frequencies (frequency preset scan):



- **Current List:** Selects an unused frequency preset:



- **Reset List:** Releases all occupied frequency presets and selects an unused frequency preset:



- ▷ Press the **SET** button to save the changes you made to the settings.  
or
- ▷ Press the **ON/OFF** button to cancel the entry without saving the settings.

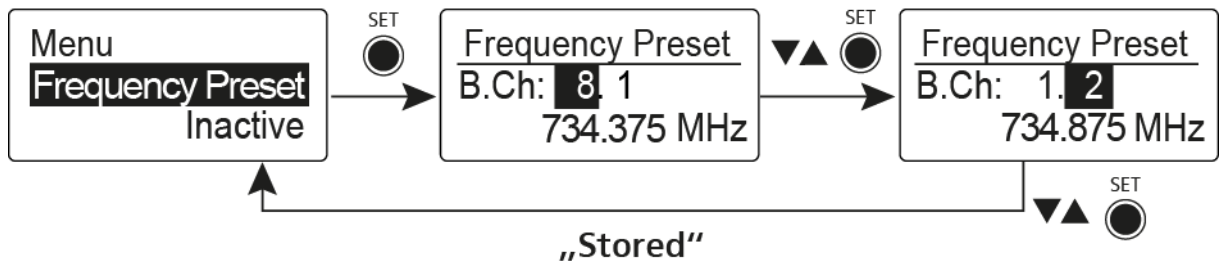


## Frequency Preset menu item

In the **Frequency Preset** menu item, you can adjust the receiving frequency of the receiver by adjusting the frequency bank and the channel.

To open the **Frequency Preset** menu item:

- ▷ On the home screen, press the **SET** button to open the operating menu.
- ▷ Press the **UP** or **DOWN** button until the **Frequency Preset** menu item appears in the selection frame.
- ▷ Press the **SET** button to open the menu item.
- ▷ Adjust the settings as desired.



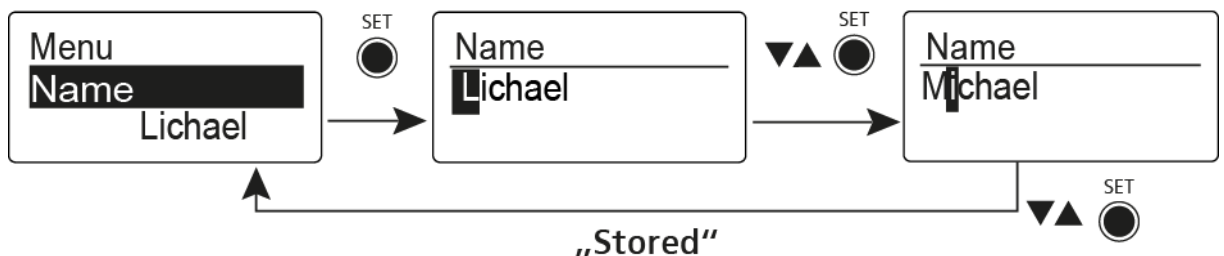
- ▷ Press the **SET** button to save the changes you made to the settings.  
or
- ▷ Press the **ON/OFF** button to cancel the entry without saving the settings.

## Name menu item

In the **Name** menu item you can enter a name for the radio link.

To open the **Name** menu item:

- ▷ On the home screen, press the **SET** button to open the operating menu.
- ▷ Press the **UP** or **DOWN** button until the **Name** menu item appears in the selection frame.
- ▷ Press the **SET** button to open the menu item.
- ▷ Adjust the settings as desired.



- ▷ Press the **SET** button to save the changes you made to the settings.  
or
- ▷ Press the **ON/OFF** button to cancel the entry without saving the settings.





## AF Out menu item

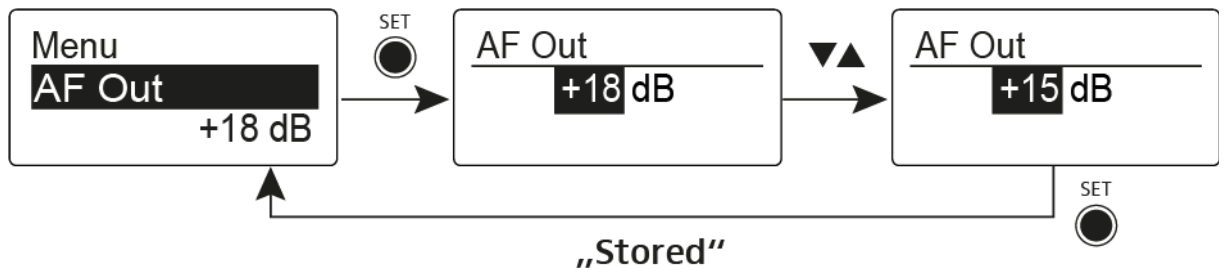
In the **AF Out** menu item you can adjust the level of the line audio output based on the level of the connected camera.

### Setting range:

- -24 dB to +18 dB in 6 dB steps

To open the **AF Out** menu item:

- ▷ On the home screen, press the **SET** button to open the operating menu.
- ▷ Press the **UP** or **DOWN** button until the **AF Out** menu item appears in the selection frame.
- ▷ Press the **SET** button to open the menu item.
- ▷ Adjust the settings as desired.



- ▷ Press the **SET** button to save the changes you made to the settings.  
or
- ▷ Press the **ON/OFF** button to cancel the entry without saving the settings.



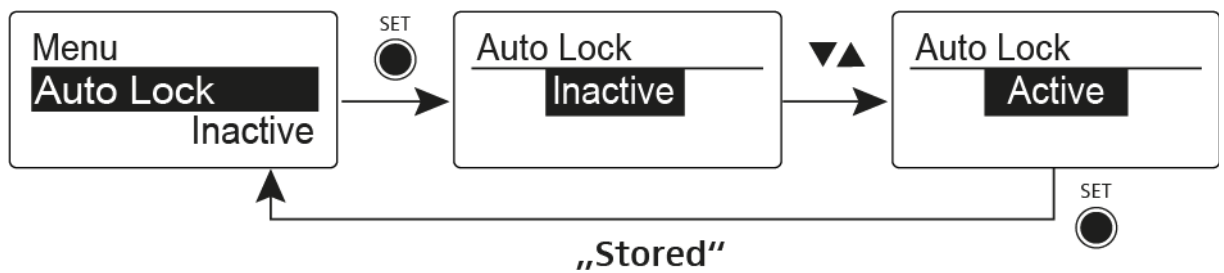
## Auto Lock menu item

In the **Auto Lock** menu item you can activate or deactivate the auto lock-off function.

**i** You can find information about temporarily deactivating the lock-off function during operation under “Lock-off function”.

To open the **Auto Lock** menu item:

- ▷ On the home screen, press the **SET** button to open the operating menu.
- ▷ Press the **UP** or **DOWN** button until the **Auto Lock** menu item appears in the selection frame.
- ▷ Press the **SET** button to open the menu item.
- ▷ Adjust the settings as desired.



- ▷ Press the **SET** button to save the changes you made to the settings.  
or
- ▷ Press the **ON/OFF** button to cancel the entry without saving the settings.



## Advanced menu item

In the **Advanced** submenu you can configure enhanced settings.

To open the **Advanced** submenu:

- ▷ On the home screen, press the **SET** button to open the operating menu.
- ▷ Press the **UP** or **DOWN** button until the **Advanced** menu item appears in the selection frame.
- ▷ Press the **SET** button to open the menu item.

The following sub-items are available:

---

### Adjusting the receiving frequency for the frequency bank U

- ▷ See “Advanced -> Tune menu item”

---

### Activating/deactivating the parameters to be transferred to the transmitters

- ▷ See “Advanced -> Sync Settings menu item”

---

### Activating/deactivating the pilot tone evaluation

- ▷ See “Advanced -> Pilot Tone menu item”

---

### Adjusting the contrast of the display panel

- ▷ See “Advanced -> LCD Contrast menu item”

---

### Resetting the receiver

- ▷ See “Advanced -> Reset menu item”

---

### Displaying the current software revision

- ▷ See “Advanced -> Software Revision menu item”
-

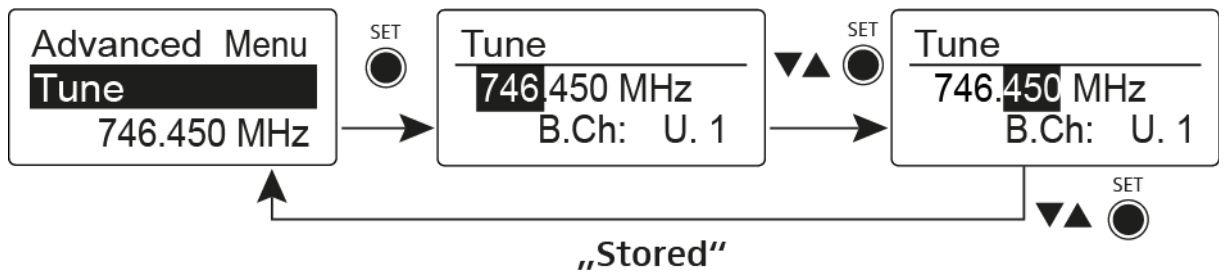


## Advanced -> Tune menu item

In the **Tune** menu item of the **Advanced** submenu, you can configure the receiving frequencies for the **U** frequency bank.

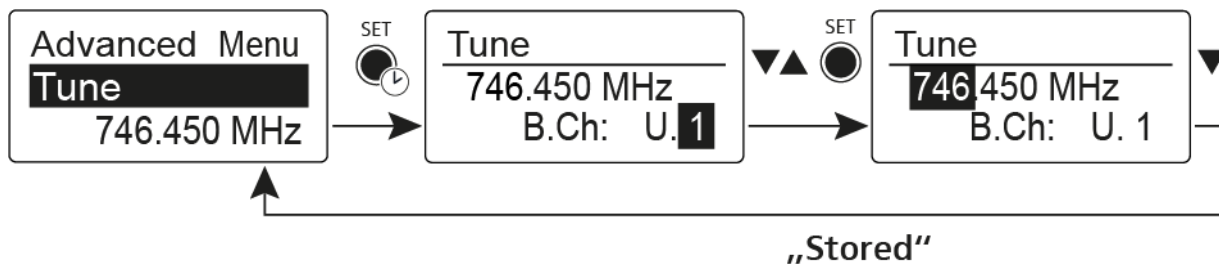
### Only adjusting the frequency

- ▷ Open the **Tune** menu item in the **Advanced** menu.
- ▷ Adjust the settings.



### Setting the channel and frequency

- ▷ Select the menu item and call it up by holding down the **SET** button until the channel selection appears.





## Advanced -> Sync Settings menu item

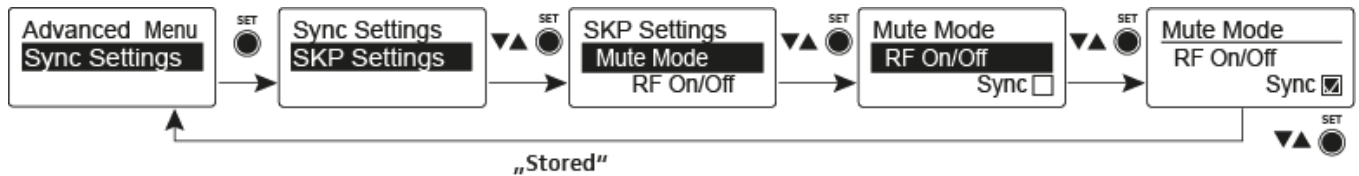
In the **Sync Settings** menu item of the **Advanced** submenu, you can configure the parameters to be sent to the transmitters and activate or deactivate transmission. The parameters are defined separately for the SK, SKM and SKP.

You can activate/deactivate the following parameters:

- Sensitivity
- Auto Lock
- Mute Mode
- RF Power
- Phantom Power 48 V (only SKP 500 G4)

To configure a parameter and activate or deactivate transmission:

- ▷ Go to the parameter in question in the **Advanced -> Sync Settings** menu.
- ▷ Press the **SET** button to open the sub-item.
- ▷ Press the **UP** and **DOWN** buttons to set the value.
- ▷ Press the **SET** button to save the setting.
- ▷ Press the **UP** and **DOWN** buttons to activate or deactivate the check box.



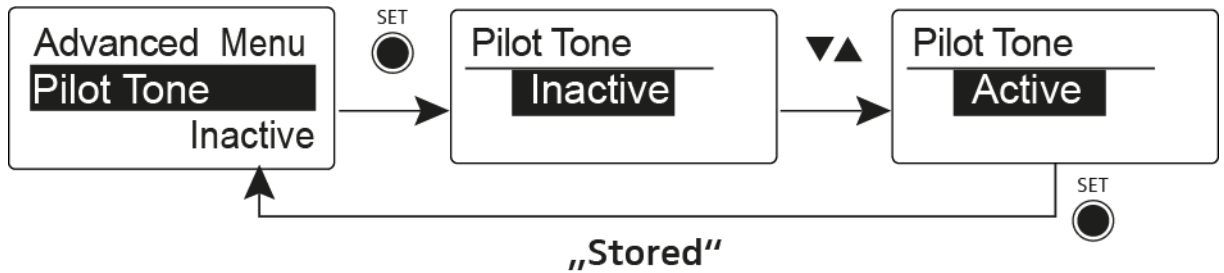
When the check box is activated, the value will be transmitted during synchronization. If it is deactivated, the value will not be transmitted.

- ▷ Press the **SET** button to save the setting.



## Advanced -> Pilot Tone menu item

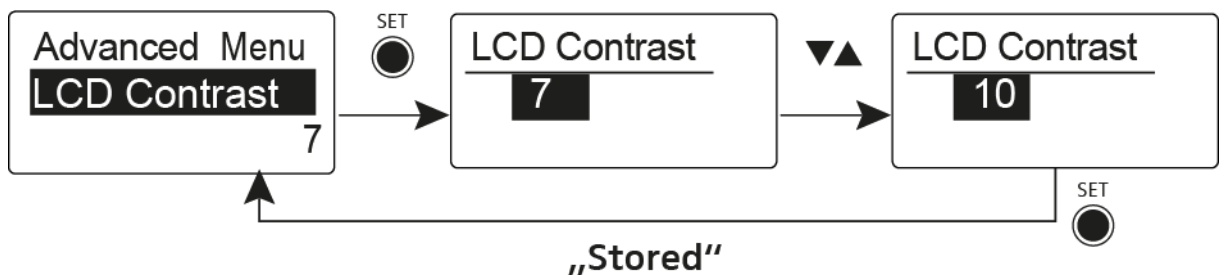
In the **Pilot Tone** menu item of the **Advanced** submenu, you can activate and deactivate the pilot tone evaluation.



The pilot tone has an inaudible frequency that is sent from the transmitter and evaluated by the receiver. It supports the receiver's squelch function.

## Advanced -> LCD Contrast menu item

In the **LCD Contrast** menu item of the **Advanced** submenu, you can adjust the display contrast of the display panel in 16 steps.

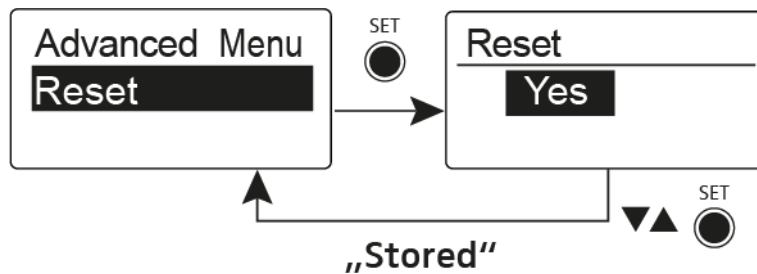




## Advanced -> Reset menu item

In the **Reset** menu item of the **Advanced** submenu, you can reset the settings of the receiver.

When you reset the diversity receiver, only the selected settings of the pilot tone and the **U** frequency bank are retained.



## Advanced -> Software Revision menu item

In the **Software Revision** menu item of the **Advanced** submenu, you can display the current software version of the receiver.

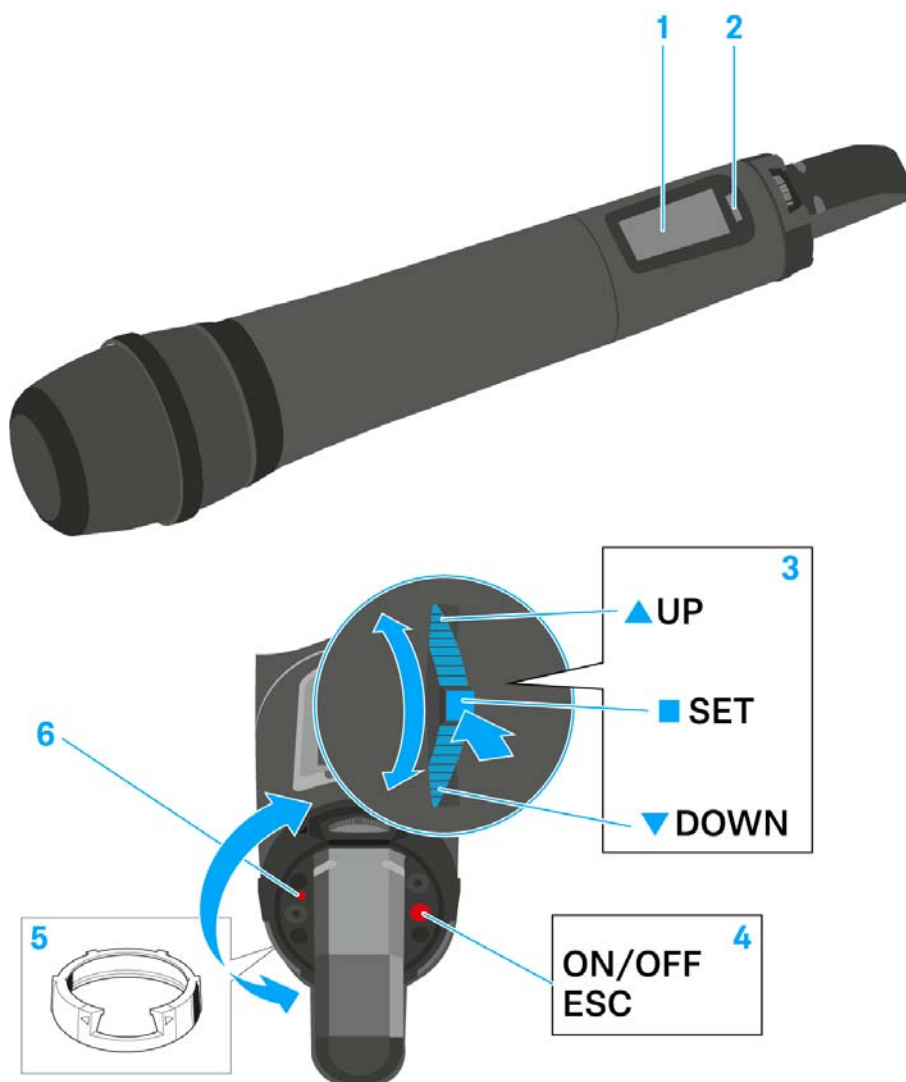


## Using the SKM 500 G4

These sections contain detailed information about using the SKM 500 G4.

You can find information on installation and startup of the SKM 500 G4 under “Installing the SKM 500 G4”.

### Operating elements of the SKM 500 G4 handheld transmitter



- 1** Display panel
  - See “Displays on the SKM 500 G4 handheld transmitter display panel”
- 2** Infra-red interface
  - See “Synchronizing devices”
- 3** **DOWN**, **UP** and **SET** multi-function switch
  - See “Buttons for navigating the SKM 500 G4 menu”



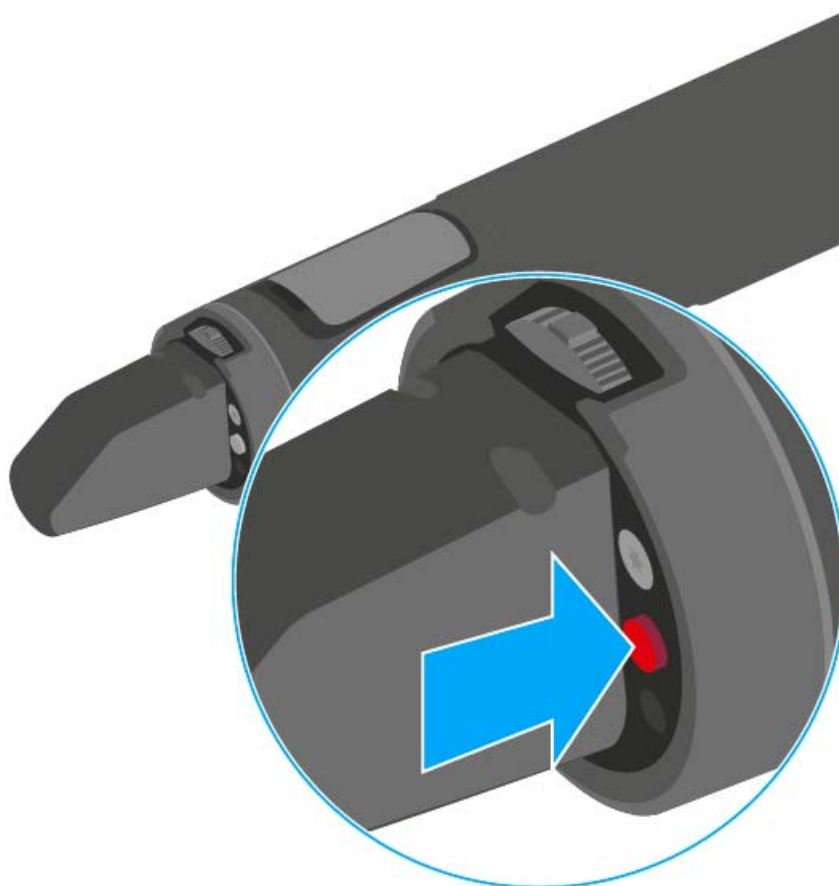


- 4 ON/OFF** button with ESC function in the operating menu
  - Switch the transmitter on or off  
See “Switching the SKM 500 G4 handheld transmitter on and off”
  - Escape function in the menu  
See “Buttons for navigating the SKM 500 G4 menu”
  - Deactivating the RF signal  
See “Deactivating the RF signal (RF mute)”
- 5 Colored ring**
  - Available in different colors (see “Additional accessories” and “Changing the colored ring”)
  - Can be turned to protect the multi-function switch
- 6 Operation and battery indicator, red LED**
  - illuminated = ON  
See “Switching the SKM 500 G4 handheld transmitter on and off”
  - flashing = LOW BATTERY  
See “Inserting and removing the batteries/rechargeable batteries”

## Switching the SKM 500 G4 handheld transmitter on and off

To switch on the SKM 500 G4:

- ▷ Hold down the **ON/OFF** button until the Sennheiser logo appears on the display.



To switch off the SKM 500 G4:

- ▷ Hold down the **ON/OFF** button until the display goes off.



## Muting the handheld transmitter (AF mute)

The audio signal of the transmitter cannot be muted.

However, when you deactivate the RF signal no AF signal is output. See “Deactivating the RF signal (RF mute)”.

## Deactivating the RF signal (RF mute)

You can deactivate the RF signal with the **ON/OFF** button.

To deactivate the RF signal:

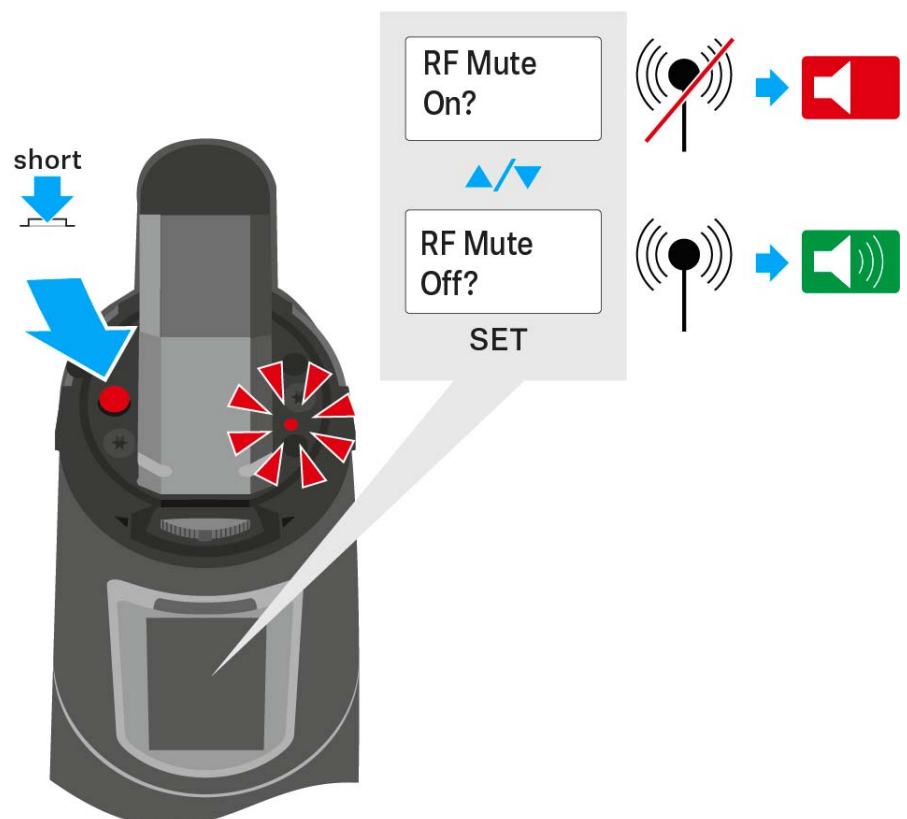
- ▷ Press the **ON/OFF** button.  
RF Mute On? appears.
- ▷ Press the **SET** button.

The transmission frequency is displayed, however the wireless microphone is not transmitting an RF signal. The transmission icon is not lit (see “Displays on the SKM 500 G4 handheld transmitter display panel”).

To **activate** the RF signal:

- ▷ Press the **ON/OFF** button.  
RF Mute Off? appears.
- ▷ Press the **SET** button.

The transmission icon appears again (see “Displays on the SKM 500 G4 handheld transmitter display panel”).





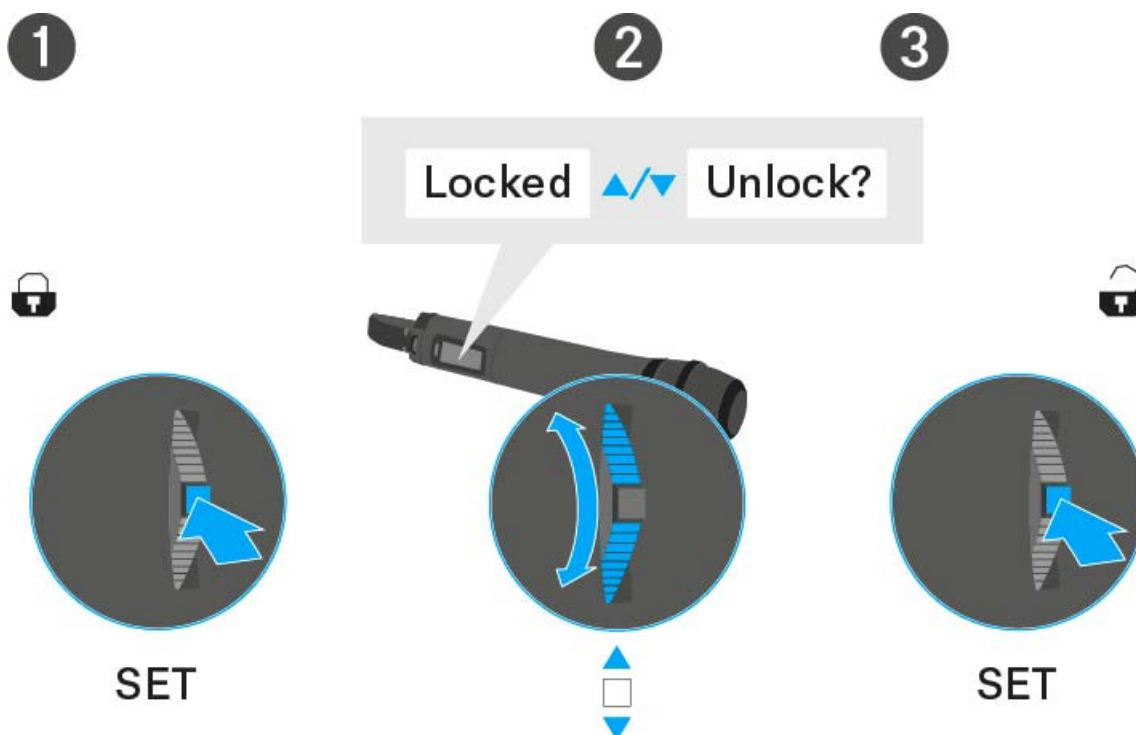
## Lock-off function

You can set the automatic lock-off function in the **Auto lock** menu (see “Auto Lock menu item”).

When you have switched on the lock-off function, you will have to turn the transmitter off and on again in order to operate it.

To temporarily deactivate the lock-off function:

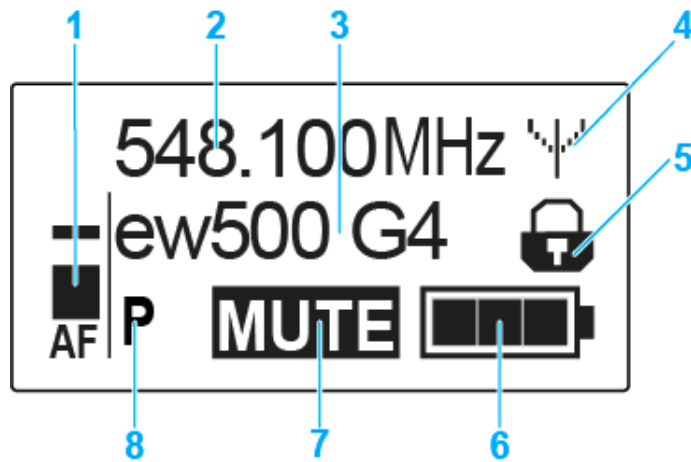
- ▷ Press the **SET** button.  
Locked appears in the display panel.
- ▷ Press the **UP** or **DOWN** button.  
Unlock? appears in the display panel.
- ▷ Press the **SET** button.  
Lock-off function is now temporarily deactivated.





## Displays on the SKM 500 G4 handheld transmitter display panel

You can view the following information on the transmitter display.



- 1 AF audio level**
  - Displays the audio level with peak hold function
  - See “Sensitivity menu item”
- 2 Frequency**
  - Configured transmission frequency
  - See “Frequency Preset menu item”
- 3 Name**
  - Freely selectable name of the receiver
  - See “Name menu item”
- 4 Transmission icon**
  - RF signal is being transmitted
  - See “Deactivating the RF signal (RF mute)”
- 5 Lock-off function**
  - Lock-off function is activated
  - See “Auto Lock menu item”
- 6 Battery status**
  - See “Battery status”
- 7 MUTE muting function**
  - The audio signal is muted
  - See “Muting the handheld transmitter (AF mute)”
- 8 P pilot tone**
  - Pilot tone transmission is activated
  - See “Advanced > Pilot Tone menu item”

---

>> “Buttons for navigating the SKM 500 G4 menu”

>> “Setting options in the menu”

---



### Select a standard display

- ▷ Move the **multi-function switch** to select a standard display:

#### Frequency/Name standard display



#### Channel/Frequency standard display



#### Name/Channel standard display





## Buttons for navigating the SKM 500 G4 menu

### Navigating through the menu

To open the menu:

- ▷ Press the **SET** button.  
The operating menu is shown on the transmitter display panel.

To open a menu item:

- ▷ Press the **UP** or **DOWN** buttons to navigate through the individual menu items.
- ▷ Press the **SET** button to open the selected menu item.



“Operating elements of the SKM 500 G4 handheld transmitter”

### Making changes in a menu item

After you open a menu item, you can make changes as follows:

- ▷ Press the **UP** or **DOWN** buttons to set the displayed value.
- ▷ Press the **SET** button to save the setting.
- ▷ Press the **ESC (ON/OFF)** button to leave the menu item without saving the setting.



“Operating elements of the SKM 500 G4 handheld transmitter”

---

>> “Displays on the SKM 500 G4 handheld transmitter display panel”

>> “Setting options in the menu”

---



## Setting options in the menu

In the SKM 500 G4 menu, you can configure the following settings.

---

### Adjusting the input sensitivity

- ▷ See “Sensitivity menu item”

---

### Setting the frequency bank and the channel

- ▷ See “Frequency Preset menu item”

---

### Entering a freely selectable name

- ▷ See “Name menu item”

---

### Activating/deactivating the automatic lock-off function

- ▷ See “Auto Lock menu item”

---

### Configuring enhanced settings in the **Advanced Menu**:

- Adjusting the transmission frequencies for the U frequency bank
  - Configuring the transmission power
  - Activating/deactivating the pilot tone evaluation
  - Adjusting the contrast of the display panel
  - Resetting the transmitter
  - Displaying the current software revision
  - ▷ See “Advanced menu item”
-

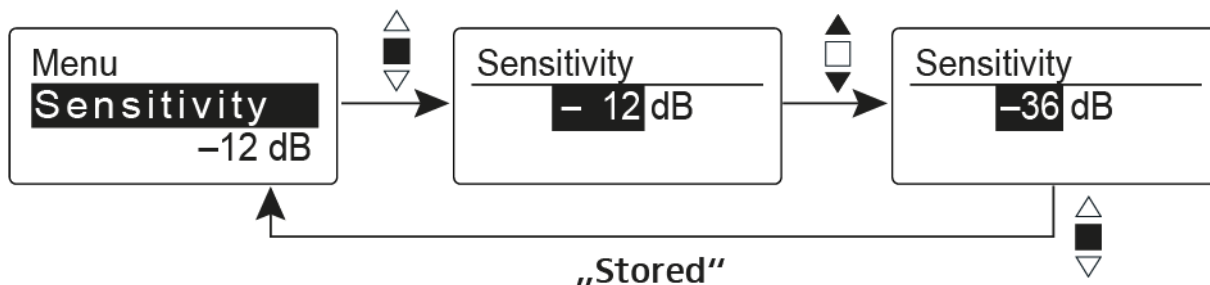


## Sensitivity menu item

- Adjusting the input sensitivity – **AF** audio level

**Setting range:** 0 dB to -48 dB in 6 dB steps

The **AF** audio level is also displayed when the wireless microphone is muted, e.g. to check the sensitivity before a live broadcast.

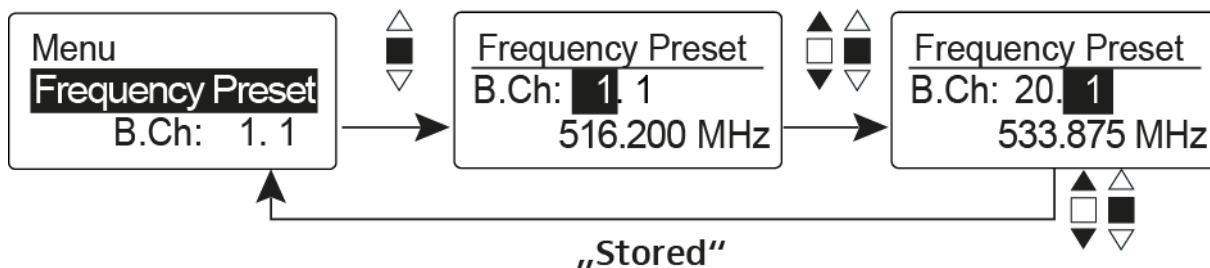


### Recommended presets:

- Loud music/vocals: -48 to -18 dB
- Moderation: -18 to -12 dB
- Interviews: -12 to 0 dB

## Frequency Preset menu item

- Manually selecting a frequency bank and channel



**i** While you work in the **Frequency Preset** menu, the RF signal is deactivated.

### Please note when creating multi-channel systems:

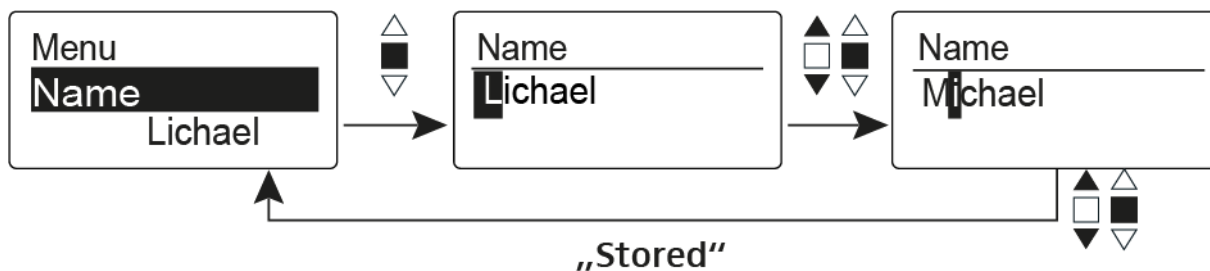
Only the factory-preset frequencies within one frequency bank are intermodulation-free. The wireless microphone and receiver must be set to the same frequency. Be sure to note the information on frequency selection under “Establishing a radio link”.





## Name menu item

- Entering names



In the **Name** menu item you can enter any name you want for the wireless microphone (e.g. the names of the musicians).

The name can be shown in the [Frequency/Name](#) and [Name/Channel](#) standard displays.

The names are a maximum of 8 characters:

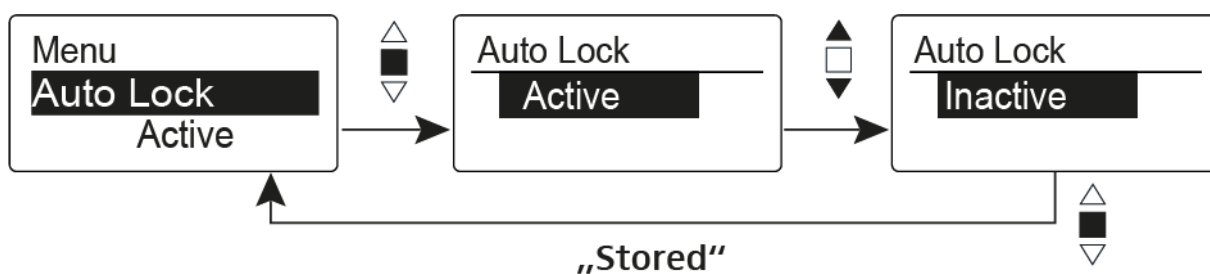
- All letters except umlauts.
- Numbers from 0 to 9
- Special characters and spaces

Enter the names as follows:

- ▷ Move the multi-function switch to select a character.
- ▷ Press the multi-function switch to jump to the next space or to save the name you have entered once it is complete.

## Auto Lock menu item

- Switching the automatic lock-off function on and off



This lock prevents the wireless microphone from being unintentionally switched off and also prevents any unintentional changes to the transmitter's configuration. In the current standard display, the lock icon shows whether the lock-off function is currently switched on.

You can find information about using the lock-off function under "Lock-off function".



## Advanced menu item

In the **Advanced** submenu you can configure enhanced settings.

The following sub-items are available:

---

### Adjusting the transmission frequencies for the U frequency bank

- ▷ See “Advanced > Tune menu item”

---

### Configuring the transmission power

- ▷ See “Advanced > RF Power menu item”

---

### Activating/deactivating the pilot tone evaluation

- ▷ See “Advanced > Pilot Tone menu item”

---

### Adjusting the contrast of the display panel

- ▷ See “Advanced > LCD Contrast menu item”

---

### Resetting the transmitter

- ▷ See “Advanced > Reset menu item”

---

### Displaying the current software revision

- ▷ See “Advanced > Software Revision menu item”
-



## Advanced > Tune menu item

- Configuring the transmission frequency and frequency bank U

When you have configured the wireless microphone to a system bank and you call up the **Tune** menu item, channel 1 of the frequency bank **U** is automatically set. The message **U.1** briefly appears in the display. In the factory settings, the channels of the frequency bank **U** are not assigned to any transmission frequency.

While you work in the **Tune** menu, the RF signal is deactivated.

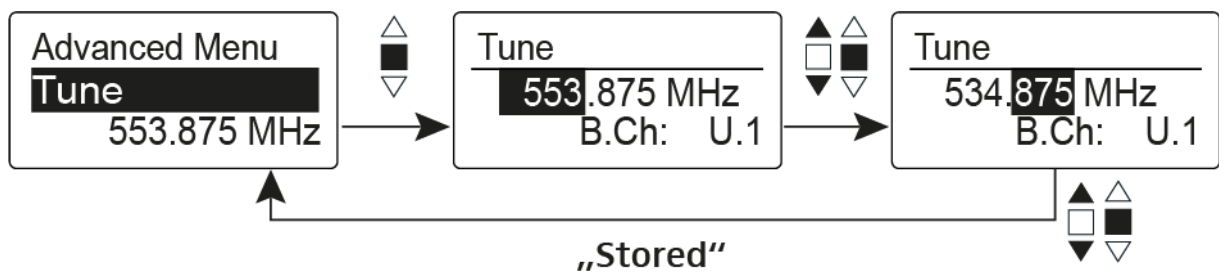
You can configure a transmission frequency for the current channel or select a channel in the frequency bank **U** and configure a transmission frequency for this channel in the **Tune** menu. Be sure to note the information on frequency selection, see “Setting notes”.

### Only adjusting the frequency

To configure the transmission frequency for the current channel:

- ▷ Move the multi-function switch until the **Tune** menu item appears.
- ▷ Press the multi-function switch.

The frequency selection appears.

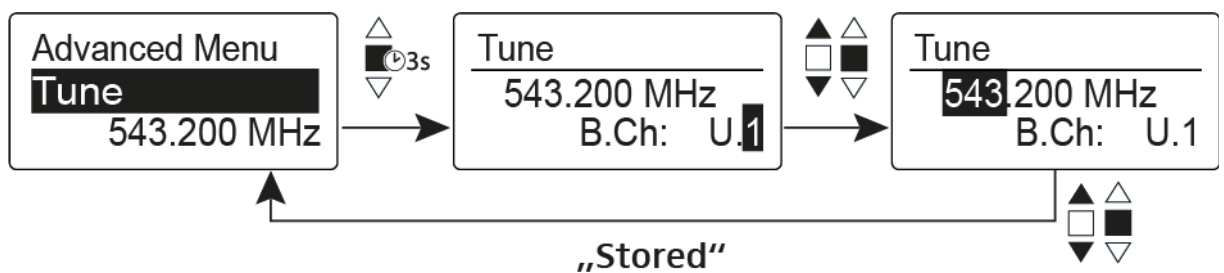


- ▷ Configure the desired frequency.
  - ▷ Press the multi-function switch.
- Your settings will be saved. You are now back in the operating menu.

### Setting the channel and frequency

To select a channel and assign it a frequency:

- ▷ Move the multi-function switch until the **Tune** menu item appears.
- ▷ Hold down the multi-function switch until the frequency bank selection appears.

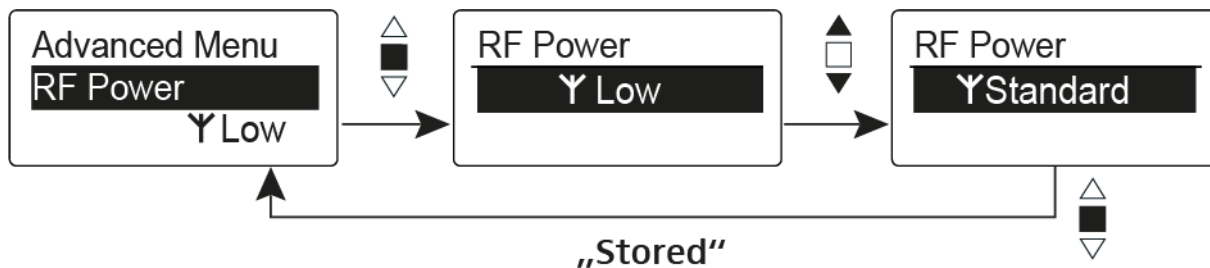


- ▷ Set the desired channel.
  - ▷ Press the multi-function switch.
- The frequency selection appears.
- ▷ Configure the frequency.



## Advanced > RF Power menu item

- Configuring the transmission power



You can configure the transmission power in three steps in the **RF Power** menu item. Please note the information at the following address:

General conditions and restrictions for the use of frequencies

### Setting range:

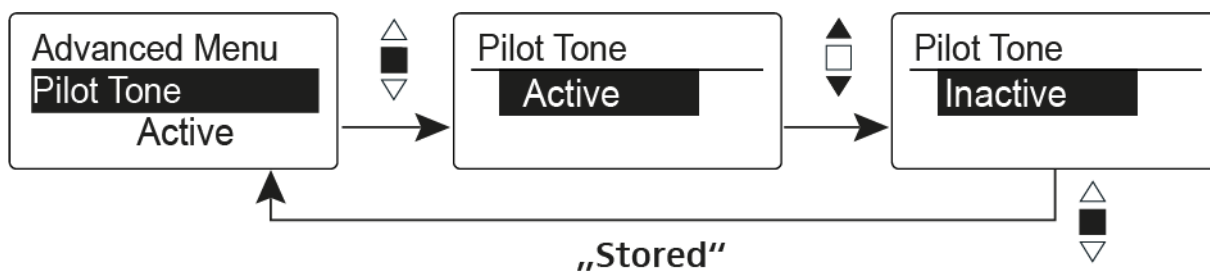
Low: 10 mW

Standard: 30 mW

High: 50 mW

## Advanced > Pilot Tone menu item

- Activating/deactivating pilot tone transmission



The pilot tone has an inaudible frequency that is sent from the transmitter and evaluated by the receiver. It supports the receiver's squelch function.



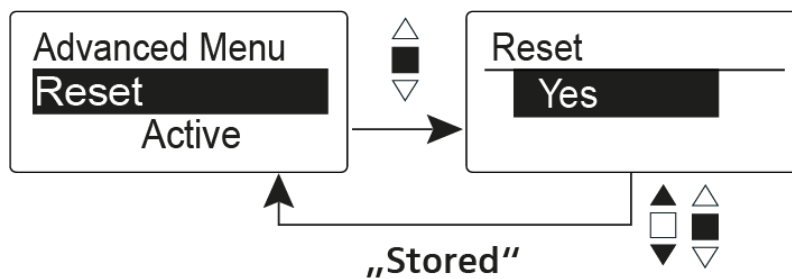
## Advanced > LCD Contrast menu item

- Adjusting the contrast of the display panel

You can configure the contrast of the display in 16 steps.

## Advanced > Reset menu item

- Resetting the wireless microphone



When you reset the wireless microphone, only the selected settings of the pilot tone and the **U1** to **U6** frequency banks are retained.

## Advanced > Software Revision menu item

- Show software revision

You can display the current software revision.

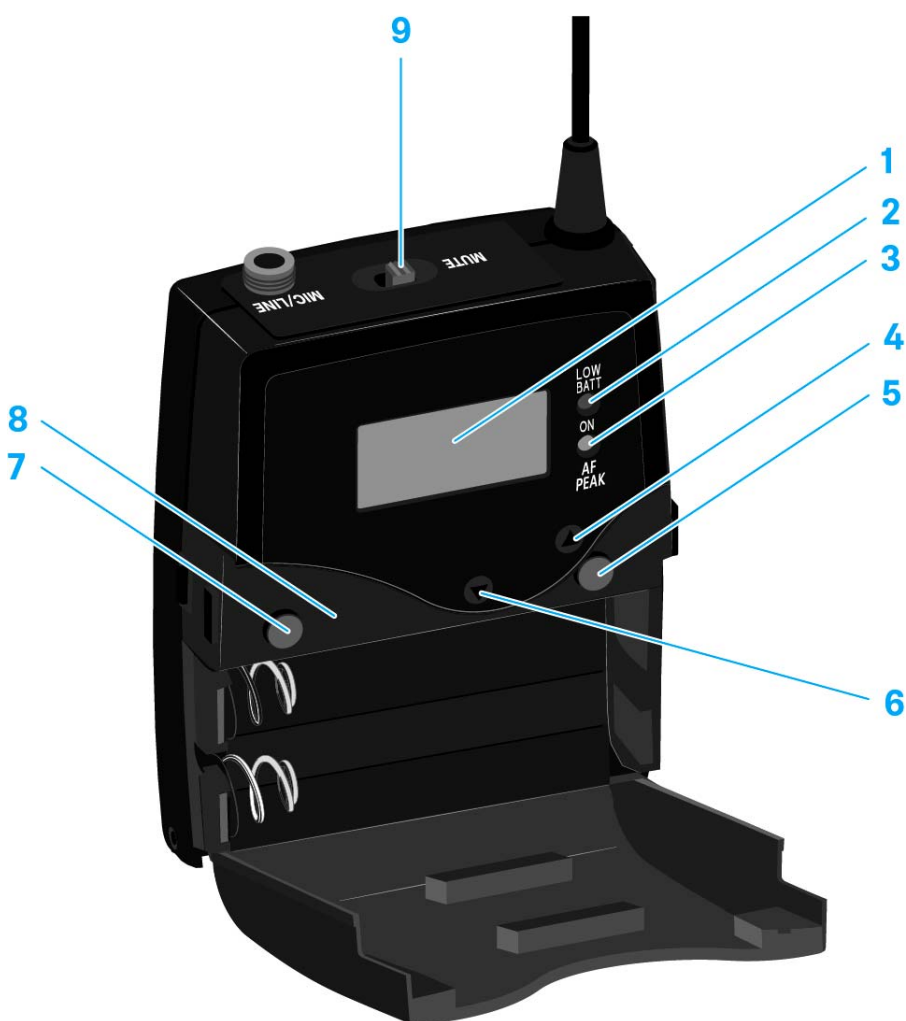


## Using the SK 500 G4

These sections contain detailed information about using the SK 500 G4.

You can find information on installation and startup of the SK 500 G4 under “Installing the SK 500 G4”.

### Operating elements of the SK 500 G4 bodypack transmitter



- 1** Display panel
  - See “Displays on the SK 500 G4 bodypack transmitter display panel”
- 2** Operation and battery indicator, red LED
  - illuminated = ON  
See “Switching the SK 500 G4 bodypack transmitter on and off”
  - flashing = LOW BATTERY  
See “Inserting and removing the batteries/rechargeable batteries”
- 3** Audio overload indicator, yellow LED
  - illuminated = AF PEAK (overload)  
See “Sensitivity menu item”



- 4 UP** button
  - See “Buttons for navigating the SK 500 G4 menu”
- 5 SET** button
  - See “Buttons for navigating the SK 500 G4 menu”
- 6 DOWN** button
  - See “Buttons for navigating the SK 500 G4 menu”
- 7 ON/OFF** button with ESC function in the operating menu
  - Switch the transmitter on or off  
See “Switching the SK 500 G4 bodypack transmitter on and off”
  - Escape function in the menu  
See “Buttons for navigating the SK 500 G4 menu”
- 8 Infra-red** interface
  - See “Synchronizing devices”
- 9 MUTE** switch
  - Deactivate and activate RF signal  
See “Deactivating the RF signal (RF mute)”
  - Deactivate and activate audio signal  
See “Muting the bodypack transmitter (AF mute)”

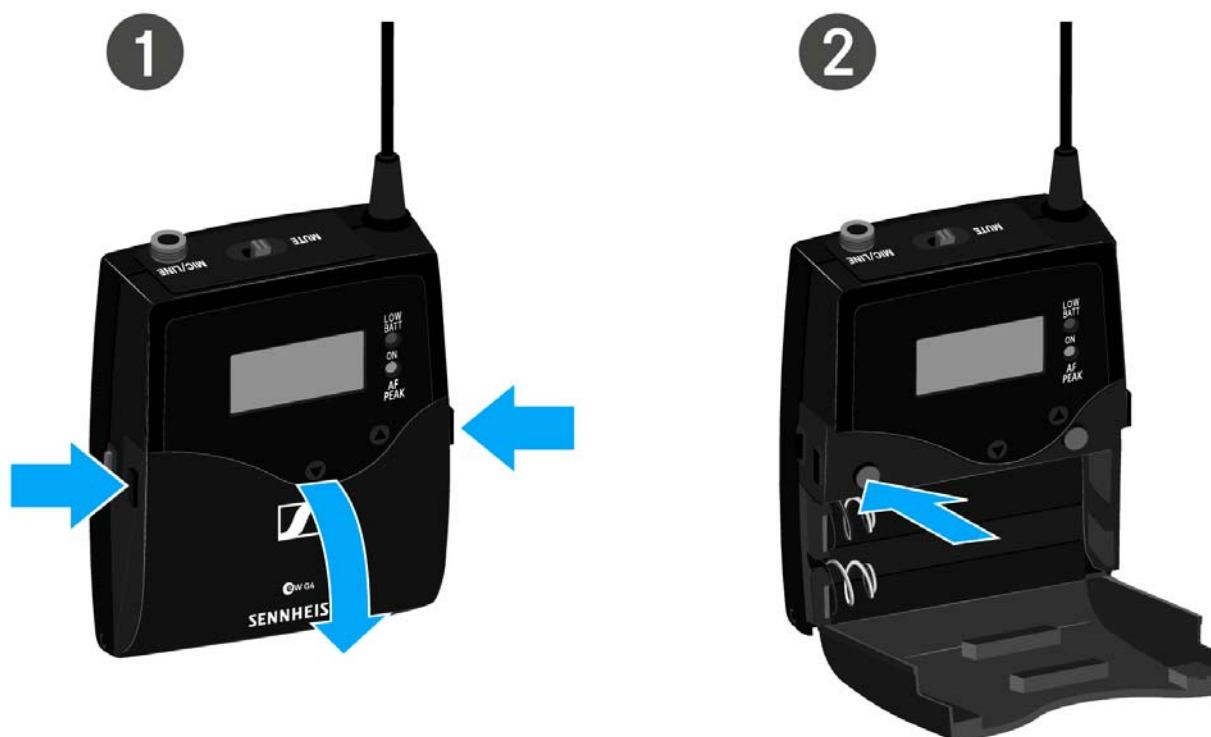


## Switching the SK 500 G4 bodypack transmitter on and off

- Press the two catches and open the battery compartment cover.

To switch on the SK 500 G4:

- Hold down the **ON/OFF** button until the Sennheiser logo appears on the display.



To switch off the SK 500 G4:

- Hold down the **ON/OFF** button until the display goes off.





## Muting the bodypack transmitter (AF mute)

You can mute the audio signal with the **MUTE** switch.

To do this, the **MUTE** switch function must be configured to **AF On/Off**. You can find more information about this subject under “Advanced > Mute Mode menu item”.



- ▷ Slide the **MUTE** switch to the **MUTE** position.  
The audio signal is muted. The message **MUTE** is shown on the display.



## Deactivating the RF signal (RF mute)

You can deactivate the RF signal in two ways:

### Deactivating the RF signal with the **MUTE** switch

You can deactivate the RF signal with the MUTE switch.

To do this, the MUTE switch function must be configured to RF On/Off. You can find more information about this subject under “Advanced > Mute Mode menu item”.



Slide the **MUTE** switch to the **MUTE** position.

The RF signal is deactivated. The message **MUTE** is shown in the display and the transmission icon no longer appears.





### Deactivating the RF signal with the **ON/OFF** button

You can deactivate the RF signal with the ON/OFF button.

To deactivate the RF signal:

- ▷ Short-press the **ON/OFF** button.  
RF Mute On? appears.
- ▷ Press the **SET** button.

The RF signal is deactivated. The message **MUTE** is shown in the display and the transmission icon no longer appears.



To activate the RF signal:

- ▷ Short-press the **ON/OFF** button.  
RF Mute Off? appears.
- ▷ Press the **SET** button.  
The transmission icon appears again.



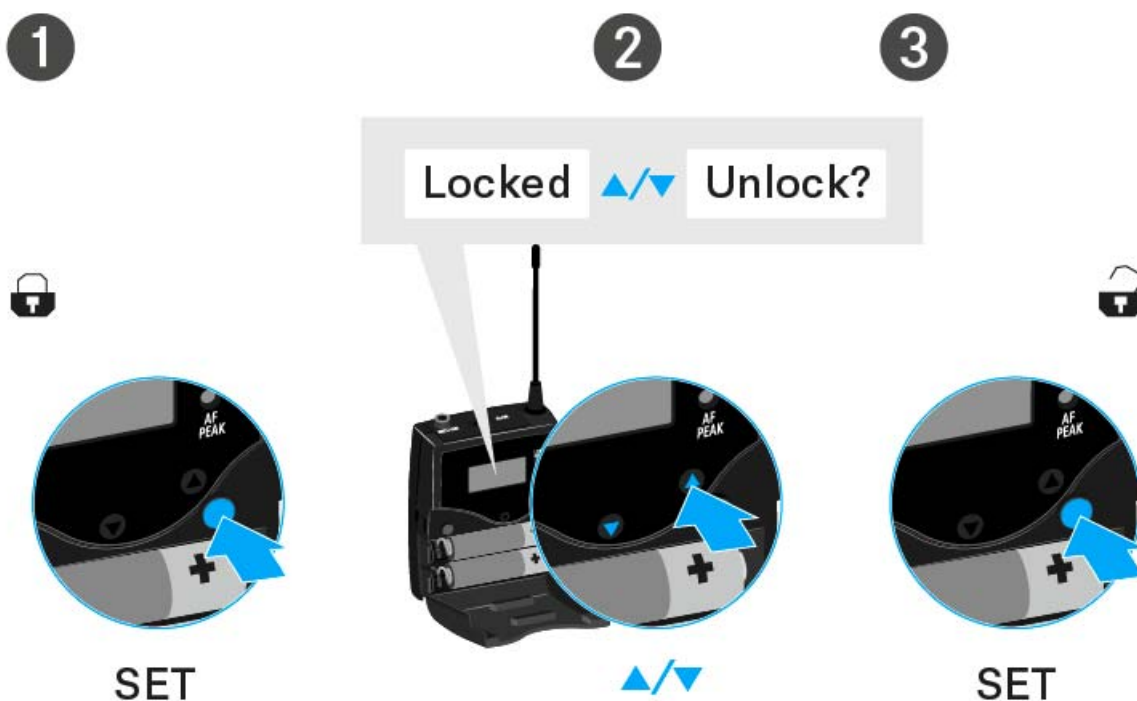
## Lock-off function

You can set the automatic lock-off function in the **Auto lock** menu (see “Auto Lock menu item”).

When you have switched on the lock-off function, you will have to turn the transmitter off and on again in order to operate it.

To temporarily deactivate the lock-off function:

- ▷ Press the **SET** button.  
Locked appears in the display panel.
- ▷ Press the **UP** or **DOWN** button.  
Unlock? appears in the display panel.
- ▷ Press the **SET** button.  
Lock-off function is now temporarily deactivated.



### When you are in the operating menu

>> Lock-off function is deactivated long enough for you to work in the operating menu.

### When one of the standard displays is shown

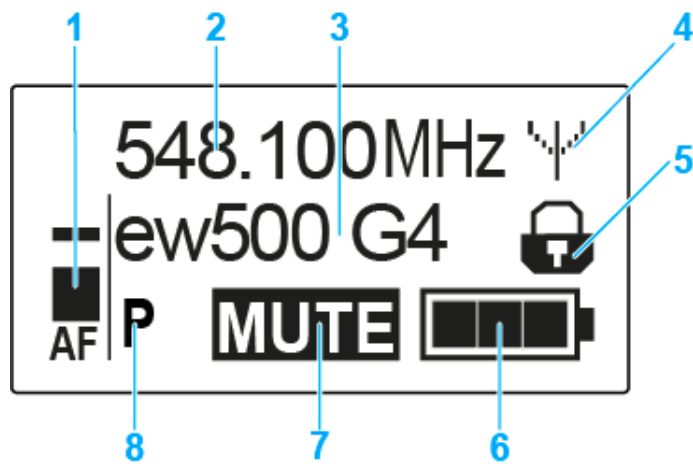
>> Lock-off function is automatically activated after 10 seconds.

The lock-off function icon flashes while the lock-off function is being activated again.



## Displays on the SK 500 G4 bodypack transmitter display panel

You can view the following information on the transmitter display.



- 1 AF** audio level
  - Displays the audio level with peak hold function
  - See “Sensitivity menu item”
- 2** Frequency
  - Configured transmission frequency
  - See “Frequency Preset menu item”
- 3** Name
  - Freely selectable name of the receiver
  - See “Name menu item”
- 4** Transmission icon
  - RF signal is being transmitted
  - See “Deactivating the RF signal (RF mute)”
- 5** Lock-off function
  - Lock-off function is activated
  - See “Auto Lock menu item”
- 6** Battery status
  - See “Battery status”
- 7 MUTE** muting function
  - The audio signal is muted
  - See “Muting the bodypack transmitter (AF mute)”
- 8 P** pilot tone
  - Pilot tone transmission is activated
  - See “Advanced > Pilot Tone menu item”

---

>> “Buttons for navigating the SK 500 G4 menu”

>> “Setting options in the menu”

---



### Select a standard display

- ▷ Press the **UP** or **DOWN** buttons to select a standard display.

#### Frequency/Name standard display



#### Channel/Frequency standard display



#### Name/Channel standard display





## Buttons for navigating the SK 500 G4 menu

### Navigating through the menu

To open the menu:

- ▷ Press the **SET** button.  
The operating menu is shown on the transmitter display panel.

To open a menu item:


- ▷ Press the **UP** or **DOWN** buttons to navigate through the individual menu items.
- ▷ Press the **SET** button to open the selected menu item.

 “Operating elements of the SK 500 G4 bodypack transmitter”

### Making changes in a menu item

After you open a menu item, you can make changes as follows:

- ▷ Press the **UP** or **DOWN** buttons to set the displayed value.
- ▷ Press the **SET** button to save the setting.
- ▷ Press the **ESC (ON/OFF)** button to leave the menu item without saving the setting.

 “Operating elements of the SK 500 G4 bodypack transmitter”

---

>> “Displays on the SK 500 G4 bodypack transmitter display panel”

>> “Setting options in the menu”

---



## Setting options in the menu

In the SK 500 G4 menu, you can configure the following settings.

---

### Adjusting the input sensitivity

- ▷ See “Sensitivity menu item”

---

### Setting the frequency bank and the channel

- ▷ See “Frequency Preset menu item”

---

### Entering a freely selectable name

- ▷ See “Name menu item”

---

### Activating/deactivating the automatic lock-off function

- ▷ See “Auto Lock menu item”

---

### Configuring enhanced settings in the **Advanced Menu**:

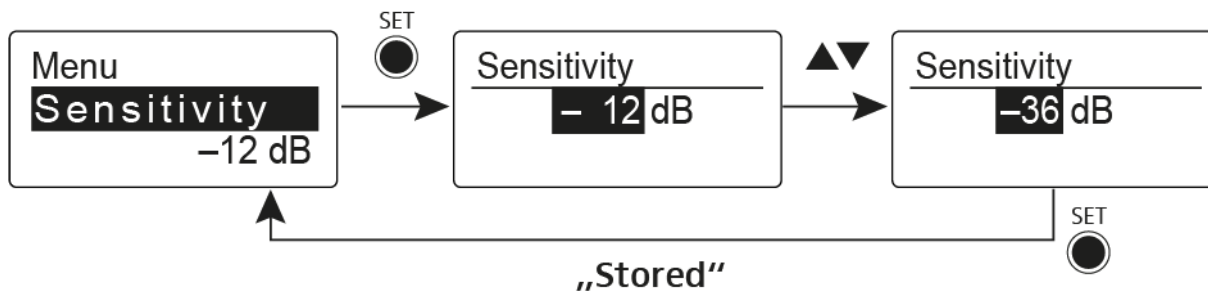
- Adjusting the transmission frequencies for the U frequency bank
  - Configuring the MUTE switch
  - Configuring the transmission power
  - Activating/deactivating the pilot tone evaluation
  - Adjusting the contrast of the display panel
  - Resetting the transmitter
  - Displaying the current software revision
  - ▷ See “Advanced menu item”
-





## Sensitivity menu item

- Adjusting the input sensitivity – **AF** audio level



**Setting range:** 0 dB to –60 dB in 6 dB steps.

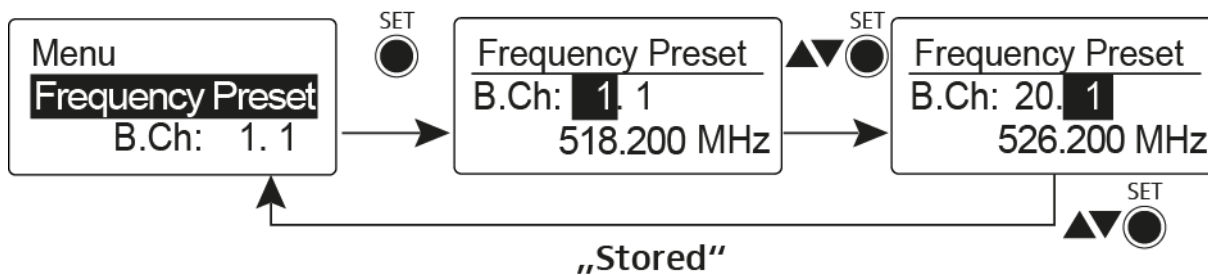
The **AF** audio level is also displayed when the bodypack transmitter is muted, e.g. to check the sensitivity before a live broadcast.

### Recommended presets:

- Loud music/vocals: –30 to –21 dB
- Moderation: –21 to 0 dB
- Electric guitar with single-coil pickups: –30 to –24 dB
- Electric guitar with Humbucker pickups: –45 to –30 dB
- Electric guitars with active electronics: –45 to –30 dB

## Frequency Preset menu item

- Manually selecting a frequency bank and channel



**i** While you work in the Frequency Preset menu, the RF signal is deactivated.

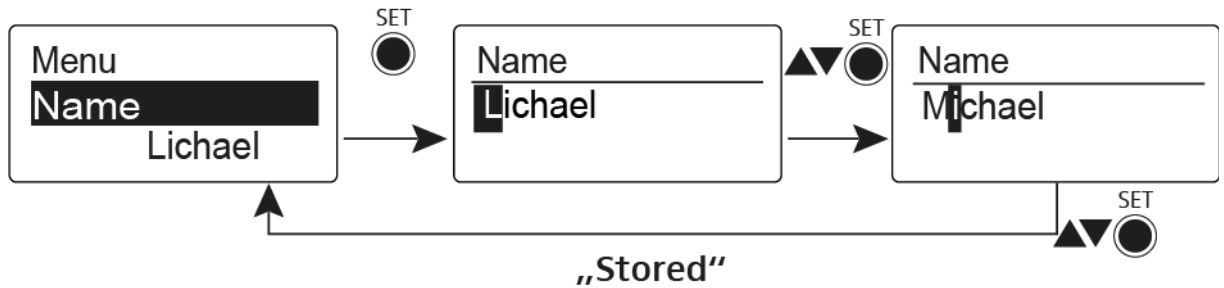
### Please note when creating multi-channel systems:

Only the factory-preset frequencies within one frequency bank are intermodulation-free. The bodypack transmitter and receiver must be set to the same frequency. Be sure to note the information on frequency selection under “Establishing a radio link”.



## Name menu item

- Entering names



In the **Name** menu item you can enter any name you want for the bodypack transmitters (e.g. the names of the musicians).

The name can be shown in the [Frequency/Name](#) and [Name/Channel](#) standard displays.

The names are a maximum of 8 characters:

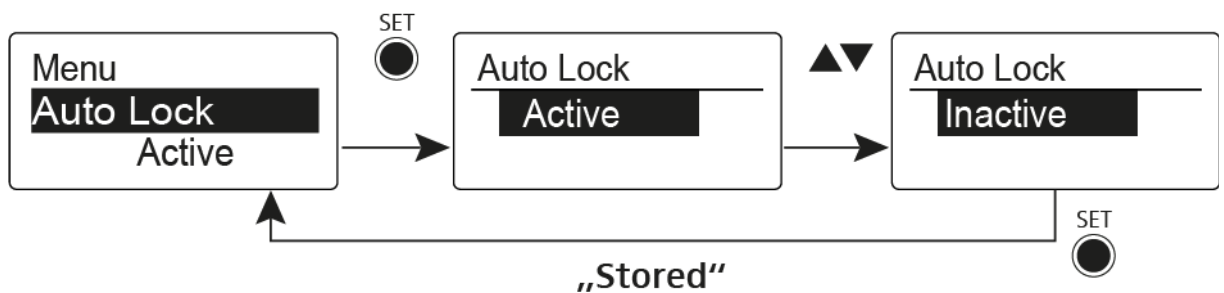
- All letters except umlauts.
- Numbers from 0 to 9
- Special characters and spaces

Enter the names as follows:

- ▷ Press the **UP** or **DOWN** buttons to select a character.
- ▷ Press the **SET** button to switch to the next space or to save the name you have entered once it is complete.

## Auto Lock menu item

- Switching the automatic lock-off function on and off



This lock prevents the wireless microphone from being unintentionally switched off and also prevents any unintentional changes to the transmitter's configuration. In the current standard display, the lock icon shows whether the lock-off function is currently switched on.

You can find information about using the lock-off function under "Lock-off function".



## Advanced menu item

In the **Advanced** submenu you can configure enhanced settings.

The following sub-items are available:

---

### Adjusting the transmission frequencies for the U frequency bank

- ▷ See “Advanced > Tune menu item”

---

### Configuring the function of the MUTE switch and the RMS 1 remote mute switch

- ▷ See “Advanced > Mute Mode menu item”

---

### Configuring the transmission power

- ▷ See “Advanced > RF Power menu item”

---

### Activating/deactivating the pilot tone evaluation

- ▷ See “Advanced > Pilot Tone menu item”

---

### Adjusting the contrast of the display panel

- ▷ See “Advanced > LCD Contrast menu item”

---

### Resetting the transmitter

- ▷ See “Advanced > Reset menu item”

---

### Displaying the current software revision

- ▷ See “Advanced > Software Revision menu item”
-



## Advanced > Tune menu item

- Configuring the transmission frequency and frequency bank U

When you have configured the bodypack transmitter to a system bank and you call up the **Tune** menu item, channel 1 of the frequency bank **U** is automatically set. The message **U.1** briefly appears in the display. In the factory settings, the channels of the frequency bank **U** are not assigned to any transmission frequency.

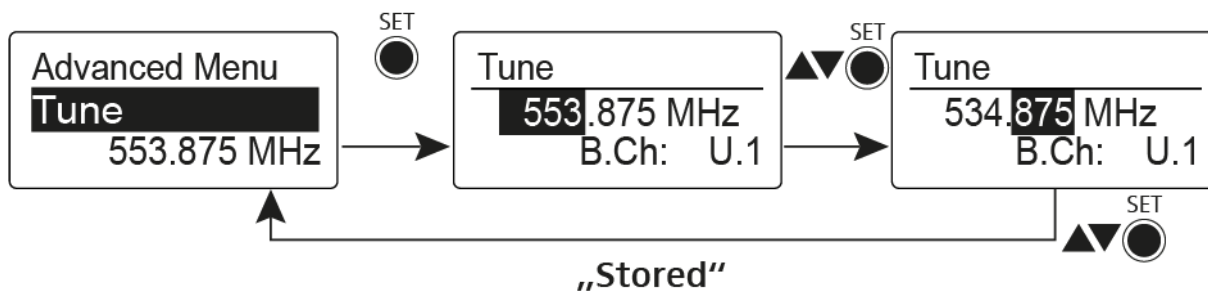
While you work in the **Tune** menu, the RF signal is deactivated.

You can configure a transmission frequency for the current channel or select a channel in the frequency bank **U** and configure a transmission frequency for this channel in the **Tune** menu. Be sure to note the information on frequency selection, see “Setting notes”.

### Only adjusting the frequency

To configure the transmission frequency for the current channel:

- ▷ Open the **Tune** menu item in the **Advanced** menu.  
The frequency selection appears.

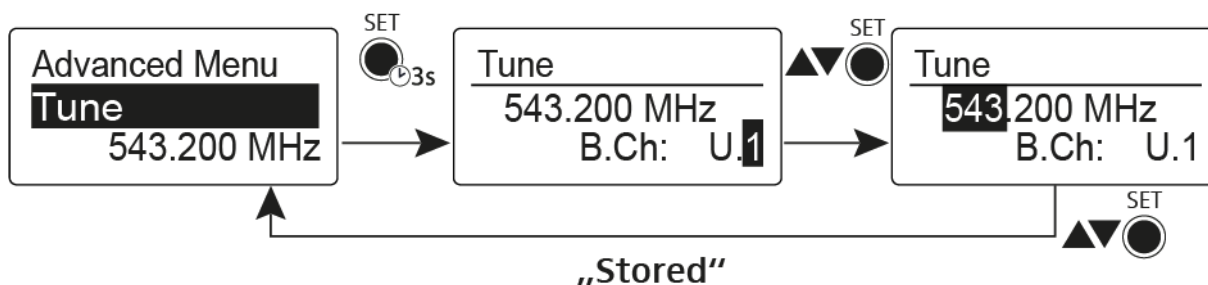


- ▷ Configure the desired frequency.
- ▷ Press the **SET** button.  
Your settings will be saved. You are now back in the operating menu.

### Setting the channel and frequency

To select a **channel** and assign it a frequency:

- ▷ Open the **Tune** menu item in the **Advanced** menu by pressing and holding the **SET** button until the frequency bank selection appears.

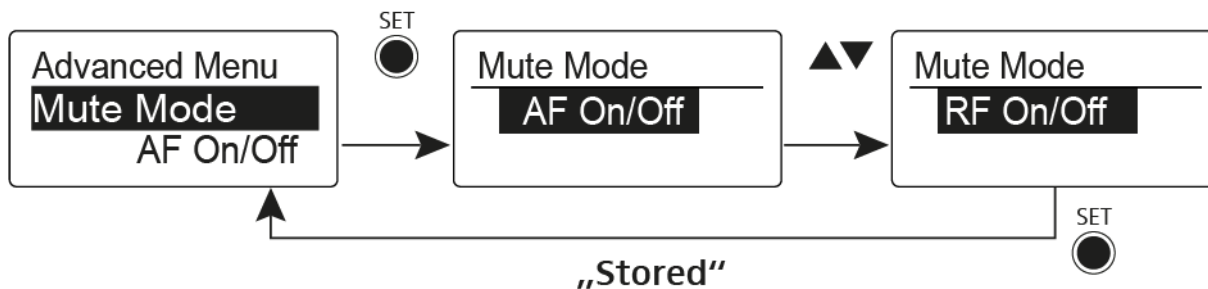


- ▷ Set the desired channel.
- ▷ Press the **SET** button.  
The frequency selection appears.
- ▷ Configure the frequency.



## Advanced > Mute Mode menu item

- Configuring the **MUTE** switch



### AF On/Off mode

- If set to position **MUTE**, the audio signal is muted

### RF On/Off mode

- If set to the **MUTE** selector position, the RF signal is deactivated.

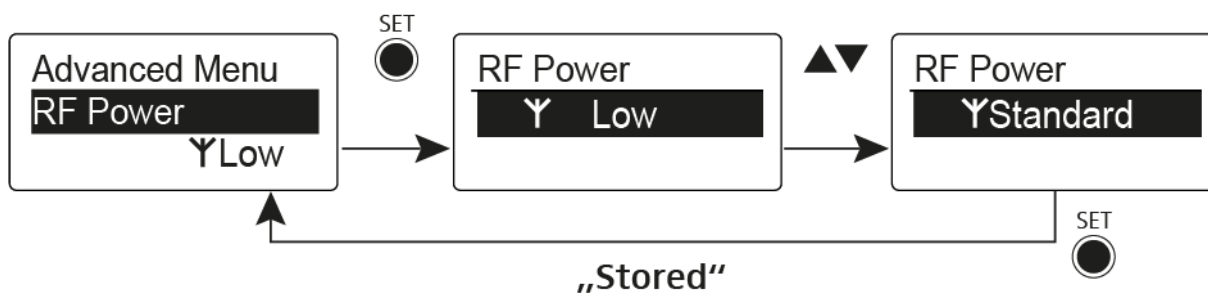
### Disabled mode

- No function

You can find information about operating the mute switch under “Muting the bodypack transmitter (AF mute)” and “Deactivating the RF signal (RF mute)”.

## Advanced > RF Power menu item

- Configuring the transmission power



You can configure the transmission power in three steps in the **RF Power** menu item. Please note the information at the following address:

General conditions and restrictions for the use of frequencies

### Setting range:

**Low:** 10 mW

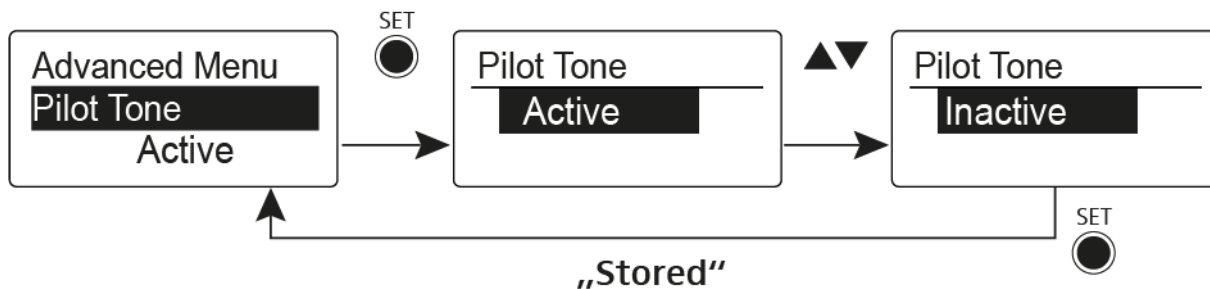
**Standard:** 30 mW

**High:** 50 mW



## Advanced > Pilot Tone menu item

- Activating/deactivating pilot tone transmission



The pilot tone has an inaudible frequency that is sent from the transmitter and evaluated by the receiver. It supports the receiver's squelch function.

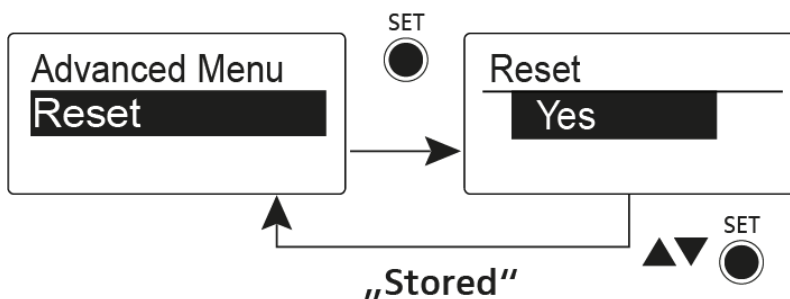
## Advanced > LCD Contrast menu item

- Adjusting the contrast of the display panel

You can configure the contrast of the display in 16 steps.

## Advanced > Reset menu item

- Resetting the bodypack transmitter



When you reset the bodypack transmitter, only the selected settings of the pilot tone and the **U** frequency bank are retained.

## Advanced > Software Revision menu item

- Show software revision

You can display the current software revision.

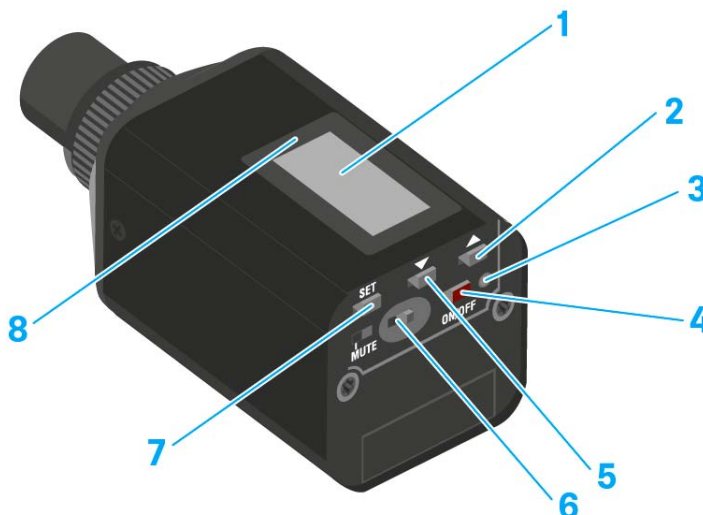


## Using the SKP 500 G4

These sections contain detailed information about using the SKP 500 G4.

You can find information on installation and startup of the SKP 500 G4 under “Installing the SKP 500 G4”.

### Operating elements of the SKP 500 G4 plug-on transmitter



- 1** Display panel
  - See “Displays on the SKP 500 G4 plug-on transmitter display panel”
- 2** UP button
  - See “Buttons for navigating the SKP 500 G4 menu”
- 3** Operation and battery indicator, red LED
  - illuminated = ON  
See “Switching the SKP 500 G4 plug-on transmitter on and off”
  - flashing = LOW BATTERY  
See “Inserting and removing the batteries/rechargeable batteries”
- 4** ON/OFF button with **ESC** function in the operating menu
  - Switch the transmitter on or off  
See “Switching the SKP 500 G4 plug-on transmitter on and off”
  - Escape function in the menu  
See “Buttons for navigating the SKP 500 G4 menu”
- 5** DOWN button
  - See “Buttons for navigating the SKP 500 G4 menu”
- 6** MUTE switch
  - See “Muting the plug-on transmitter (AF mute)”
- 7** SET button
  - See “Buttons for navigating the SKP 500 G4 menu”
- 8** Infra-red interface
  - See “Synchronizing devices”



## Switching the SKP 500 G4 plug-on transmitter on and off

To switch on the SKP 500 G4:

- Hold down the **ON/OFF** button until the Sennheiser logo appears on the display.



To switch off the SKP 500 G4:

- Hold down the **ON/OFF** button until the display goes off.





## Muting the plug-on transmitter (AF mute)

You can mute the audio signal with the **MUTE** switch.

To do this, the **MUTE** switch function must be configured to **AF On/Off**. You can find more information about this subject under “Advanced > Mute Mode menu item”.



- ▶ Slide the **MUTE** switch to the **MUTE** position.  
The audio signal is muted. The message **MUTE** is shown on the display.



## Deactivating the RF signal (RF mute)

You can deactivate the RF signal in two ways:

### Deactivating the RF signal with the **MUTE** switch

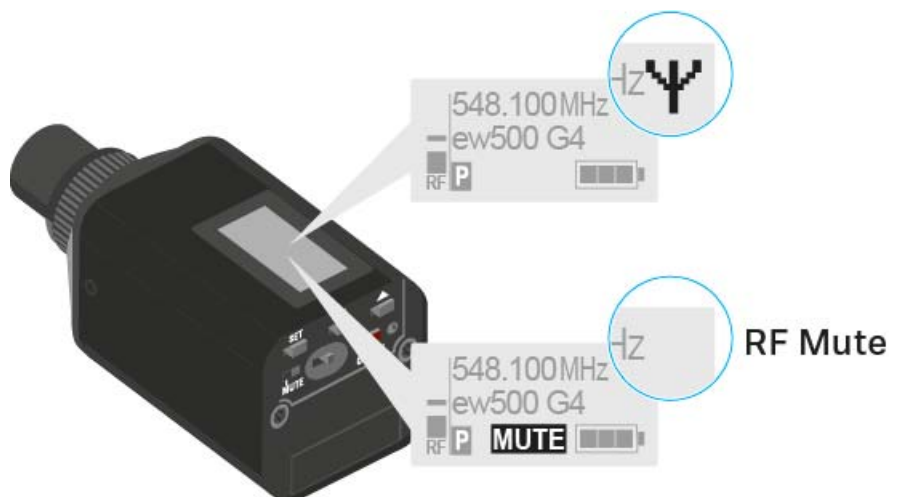
You can deactivate the RF signal with the MUTE switch.

To do this, the MUTE switch function must be configured to RF On/Off. You can find more information about this subject under “Advanced > Mute Mode menu item”.



Slide the **MUTE** switch to the **MUTE** position.

The RF signal is deactivated. The message **MUTE** is shown in the display and the transmission icon no longer appears.





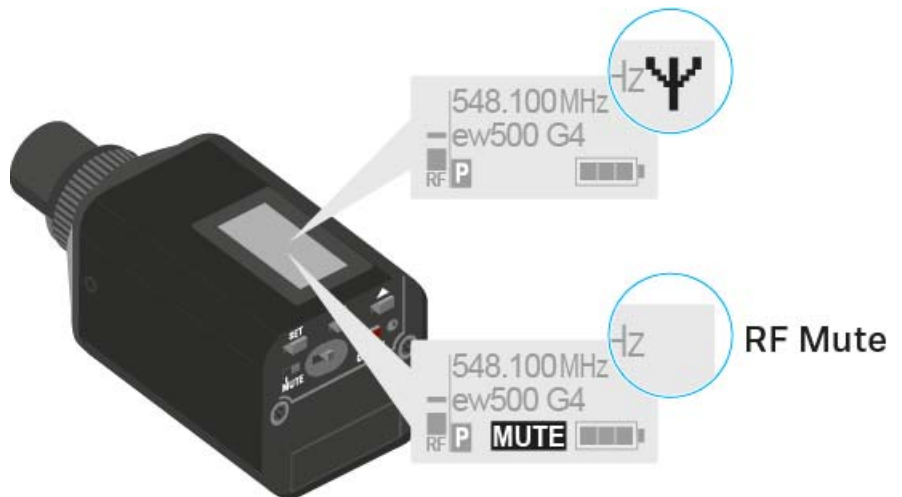
### Deactivating the RF signal with the **ON/OFF** button

You can deactivate the RF signal with the ON/OFF button.

To deactivate the RF signal:

- ▷ Short-press the **ON/OFF** button.  
RF Mute On? appears.
- ▷ Press the **SET** button.

The RF signal is deactivated. The message **MUTE** is shown in the display and the transmission icon no longer appears.



To activate the RF signal:

- ▷ Short-press the **ON/OFF** button.  
RF Mute Off? appears.
- ▷ Press the **SET** button.  
The transmission icon appears again.



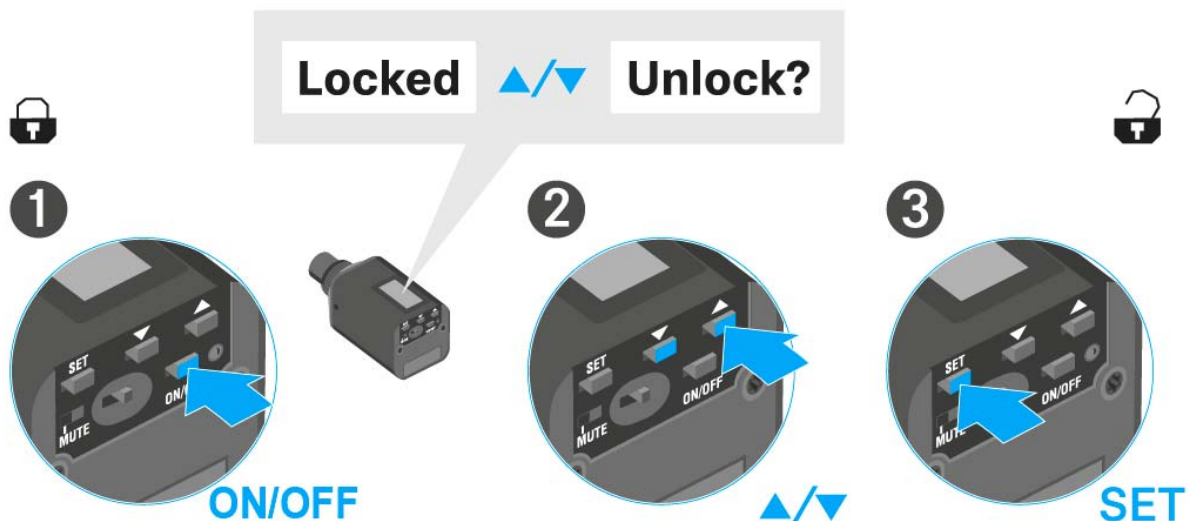
## Lock-off function

You can set the automatic lock-off function in the **Auto lock** menu (see “Auto Lock menu item”).

When you have switched on the lock-off function, you will have to turn the transmitter off and on again in order to operate it.

To temporarily deactivate the lock-off function:

- ▷ Press the **SET** button.  
Locked appears in the display panel.
- ▷ Press the **UP** or **DOWN** button.  
Unlock? appears in the display panel.
- ▷ Press the **SET** button.  
Lock-off function is now temporarily deactivated.



### When you are in the operating menu

>> Lock-off function is deactivated long enough for you to work in the operating menu.

### When one of the standard displays is shown

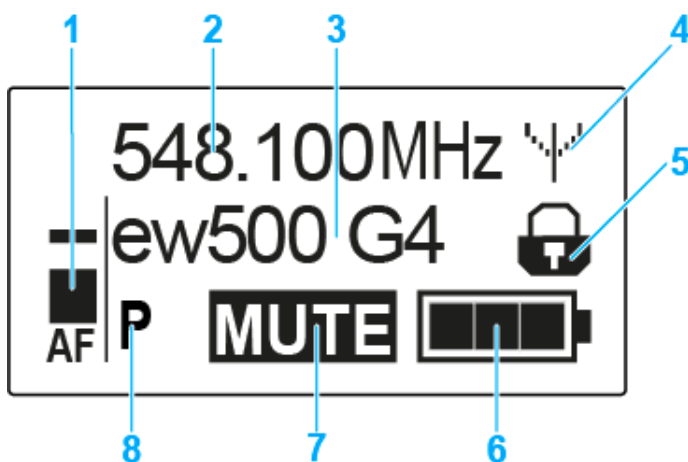
>> Lock-off function is automatically activated after 10 seconds.

The Lock-off function icon flashes while the lock-off function is being activated again.



## Displays on the SKP 500 G4 plug-on transmitter display panel

You can view the following information on the transmitter display.



- 1 AF** audio level
  - Displays the audio level with peak hold function
  - See “Sensitivity menu item”
- 2** Frequency
  - Configured transmission frequency
  - See “Frequency Preset menu item”
- 3** Name
  - Freely selectable name of the receiver
  - See “Name menu item”
- 4** Transmission icon
  - RF signal is being transmitted
  - See “Deactivating the RF signal (RF mute)”
- 5** Lock-off function
  - Lock-off function is activated
  - See “Auto Lock menu item”
- 6** Battery status
  - See “Battery status”
- 7 MUTE** muting function
  - The audio signal is muted
  - See “Muting the plug-on transmitter (AF mute)”
- 8 P** pilot tone
  - Pilot tone transmission is activated
  - See “Advanced > Pilot Tone menu item”

---

>> “Buttons for navigating the SKP 500 G4 menu”

>> “Setting options in the menu”

---



### Select a standard display

- ▷ Press the **UP** or **DOWN** buttons to select a standard display.

#### Frequency/Name standard display



#### Channel/Frequency standard display



#### Name/Channel standard display





## Buttons for navigating the SKP 500 G4 menu


### Navigating through the menu

To open the menu:

- ▷ Press the **SET** button.  
The operating menu is shown on the transmitter display panel.

To open a menu item:


- ▷ Press the **UP** or **DOWN** buttons to navigate through the individual menu items.
- ▷ Press the **SET** button to open the selected menu item.

 “Operating elements of the SKP 500 G4 plug-on transmitter”

### Making changes in a menu item

After you open a menu item, you can make changes as follows:

- ▷ Press the **UP** or **DOWN** buttons to set the displayed value.
- ▷ Press the **SET** button to save the setting.
- ▷ Press the **ESC (ON/OFF)** button to leave the menu item without saving the setting.

 “Operating elements of the SKP 500 G4 plug-on transmitter”

---

>> “Displays on the SKP 500 G4 plug-on transmitter display panel”

>> “Setting options in the menu”

---



## Setting options in the menu

In the SKP 500 G4 menu, you can configure the following settings.

---

### Adjusting the input sensitivity

- ▷ See “Sensitivity menu item”

---

### Setting the frequency bank and the channel

- ▷ See “Frequency Preset menu item”

---

### Entering a freely selectable name

- ▷ See “Name menu item”

---

### Activating/deactivating the automatic lock-off function

- ▷ See “Auto Lock menu item”

---

### Configuring enhanced settings in the **Advanced Menu**:

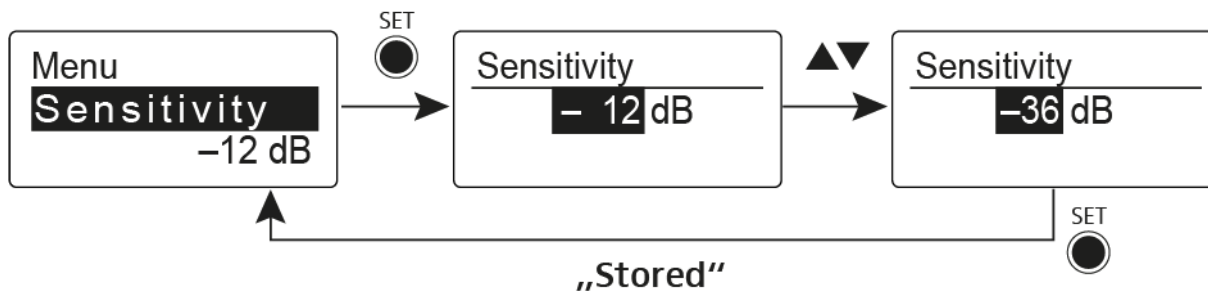
- Adjusting the transmission frequencies for the U frequency bank
  - Configuring the MUTE switch
  - Configuring the transmission power
  - Activating phantom powering
  - Activating/deactivating the pilot tone evaluation
  - Adjusting the contrast of the display panel
  - Resetting the transmitter
  - Displaying the current software revision
  - ▷ See “Advanced menu item”
-





## Sensitivity menu item

- Adjusting the input sensitivity – **AF** audio level

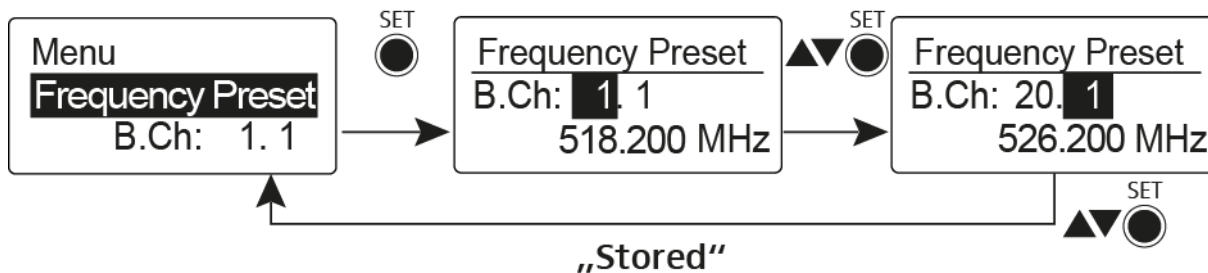


**Setting range:** 0 dB to -48 dB in 6 dB steps.

The **AF** audio level is also displayed when the plug-on transmitter is muted, e.g. to check the sensitivity before a live broadcast.

## Frequency Preset menu item

- Manually selecting a frequency bank and channel



**i** While you work in the Frequency Preset menu, the RF signal is deactivated.

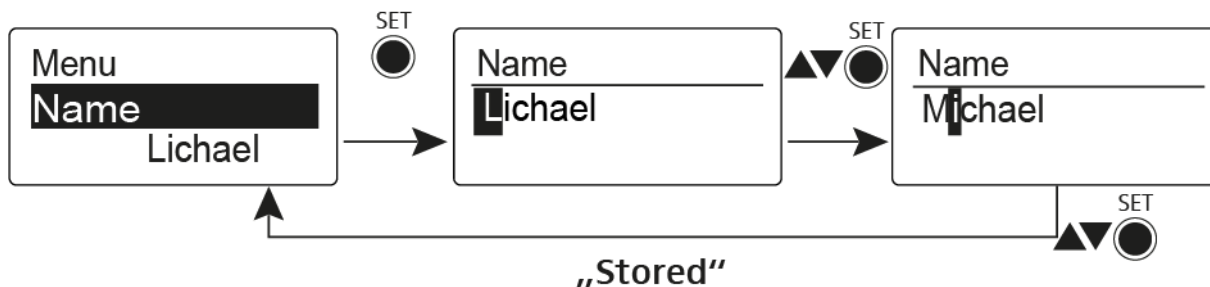
### Please note when creating multi-channel systems:

Only the factory-preset frequencies within one frequency bank are intermodulation-free. The bodypack transmitter and receiver must be set to the same frequency. Be sure to note the information on frequency selection under “Establishing a radio link”.



## Name menu item

- Entering names



In the **Name** menu item you can enter any name you want for the bodypack transmitters (e.g. the names of the musicians).

The name can be shown in the [Frequency/Name](#) and [Name/Channel](#) standard displays.

The names are a maximum of 8 characters:

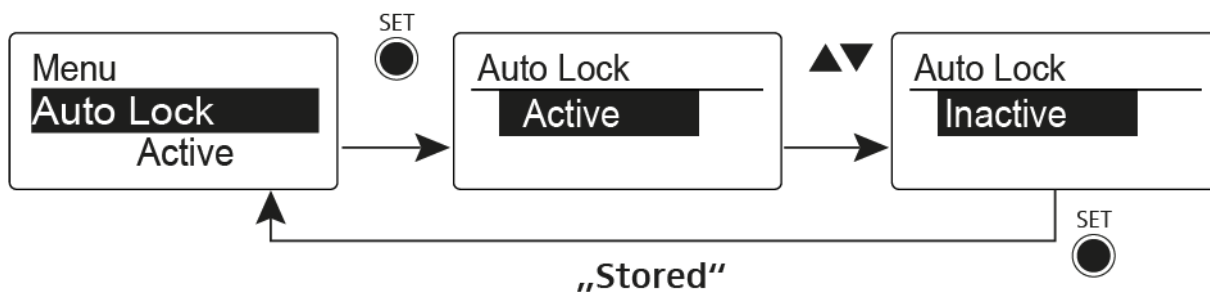
- All letters except umlauts.
- Numbers from 0 to 9
- Special characters and spaces

Enter the names as follows:

- ▷ Press the **UP** or **DOWN** buttons to select a character.
- ▷ Press the **SET** button to switch to the next space or to save the name you have entered once it is complete.

## Auto Lock menu item

- Switching automatic the lock-off function on and off



This lock prevents the wireless microphone from being unintentionally switched off and also prevents any unintentional changes to the transmitter's configuration. In the current standard display, the lock icon shows whether the lock-off function is currently switched on.

You can find information about using the lock-off function under "Lock-off function".



## Advanced menu item

In the **Advanced** submenu you can configure enhanced settings.

The following sub-items are available:

---

### Adjusting the transmission frequencies for the U frequency bank

- ▷ See “Advanced > Tune menu item”

---

### Configuring the function of the MUTE switch and the RMS 1 remote mute switch

- ▷ See “Advanced > Mute Mode menu item”

---

### Configuring the transmission power

- ▷ See “Advanced > RF Power menu item”

---

### Activating phantom powering

- ▷ See “Advanced > Phantom Power 48V menu item”

---

### Activating/deactivating the pilot tone evaluation

- ▷ See “Advanced > Pilot Tone menu item”

---

### Adjusting the contrast of the display panel

- ▷ See “Advanced > LCD Contrast menu item”

---

### Resetting the transmitter

- ▷ See “Advanced > Reset menu item”

---

### Displaying the current software revision

- ▷ See “Advanced > Software Revision menu item”
-



## Advanced > Tune menu item

- Configuring the transmission frequency and frequency bank U

When you have configured the bodypack transmitter to a system bank and you call up the **Tune** menu item, channel 1 of the frequency bank **U** is automatically set. The message **U.1** briefly appears in the display. In the factory settings, the channels of the frequency bank **U** are not assigned to any transmission frequency.

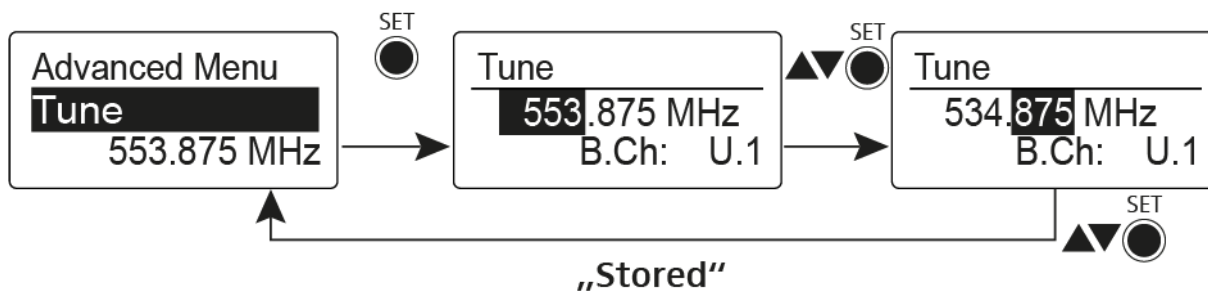
While you work in the **Tune** menu, the RF signal is deactivated.

You can configure a transmission frequency for the current channel or select a channel in the frequency bank **U** and configure a transmission frequency for this channel in the **Tune** menu. Be sure to note the information on frequency selection, see “Setting notes”.

### Only adjusting the frequency

To configure the transmission frequency for the current channel:

- ▷ Open the **Tune** menu item in the **Advanced** menu.  
The frequency selection appears.

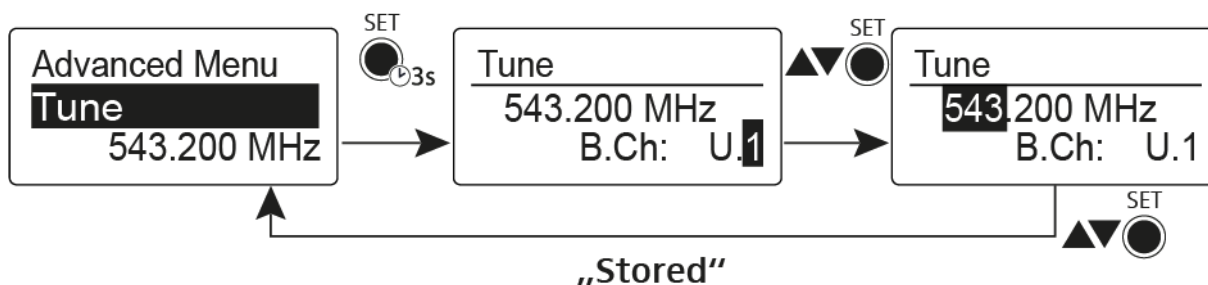


- ▷ Configure the desired frequency.
- ▷ Press the **SET** button.  
Your settings will be saved. You are now back in the operating menu.

### Setting the channel and frequency

To select a **channel** and assign it a frequency:

- ▷ Open the **Tune** menu item in the **Advanced** menu by pressing and holding the **SET** button until the frequency bank selection appears.

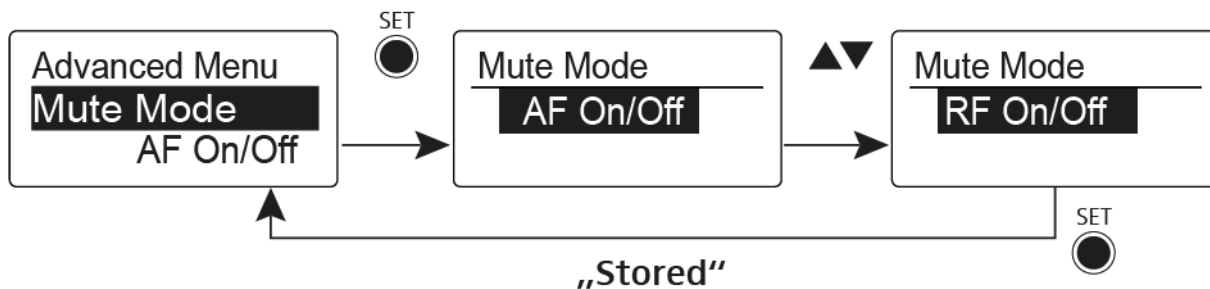


- ▷ Set the desired channel.
- ▷ Press the **SET** button.  
The frequency selection appears.
- ▷ Configure the frequency.



## Advanced > Mute Mode menu item

- Configuring the **MUTE** switch



### AF On/Off mode

- If set to position **MUTE**, the audio signal is muted

### RF On/Off mode

- If set to the **MUTE** selector position, the RF signal is deactivated.

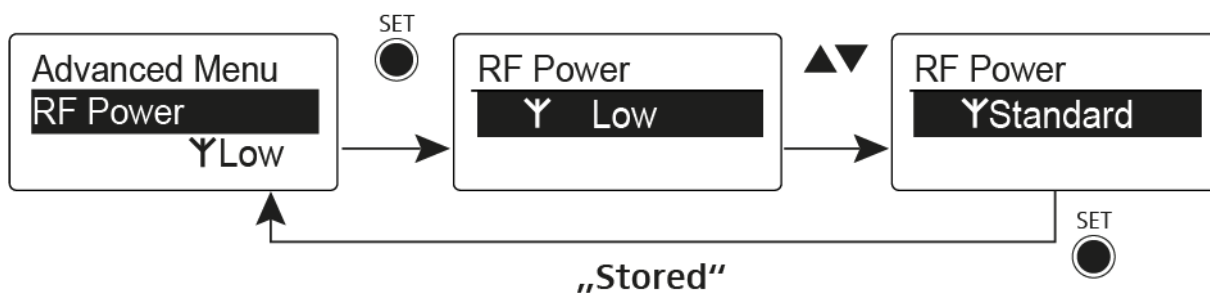
### Disabled mode

- No function

You can find information about operating the mute switch under “Muting the plug-on transmitter (AF mute)” and “Deactivating the RF signal (RF mute)”.

## Advanced > RF Power menu item

- Configuring the transmission power



You can configure the transmission power in three steps in the **RF Power** menu item. Please note the information at the following address:

General conditions and restrictions for the use of frequencies

### Setting range:

**Low:** 10 mW

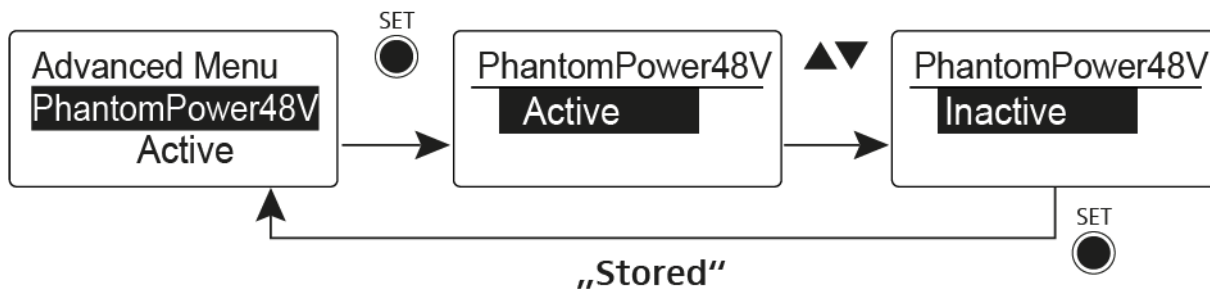
**Standard:** 30 mW

**High:** 50 mW



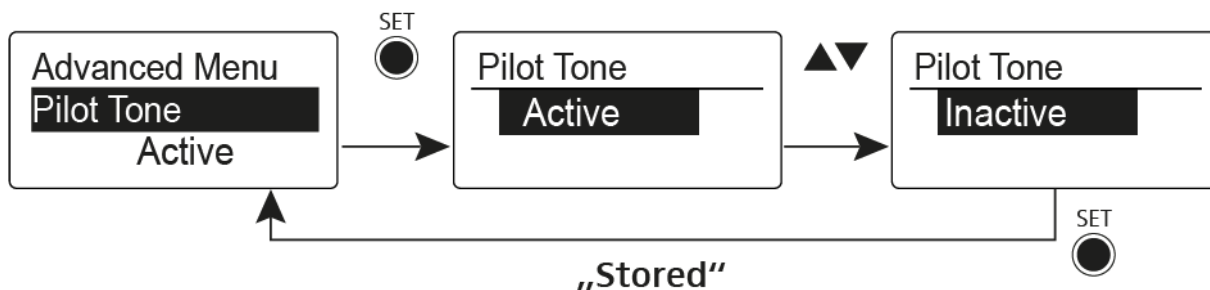
## Advanced > Phantom Power 48V menu item

- Activating phantom powering



## Advanced > Pilot Tone menu item

- Activating/deactivating pilot tone transmission



The pilot tone has an inaudible frequency that is sent from the transmitter and evaluated by the receiver. It supports the receiver's squelch function.

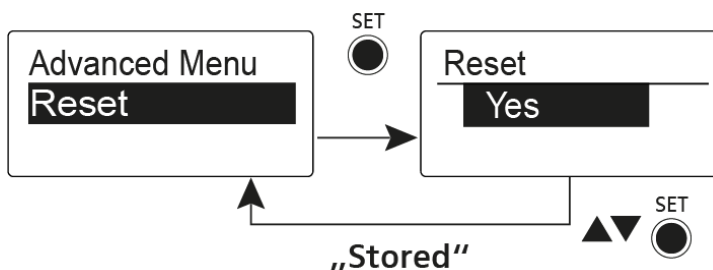
## Advanced > LCD Contrast menu item

- Adjusting the contrast of the display panel

You can configure the contrast of the display in 16 steps.

## Advanced > Reset menu item

- Resetting the plug-on transmitter



When you reset the plug-on transmitter, only the selected settings of the pilot tone and the **U** frequency bank are retained.

## Advanced > Software Revision menu item

- Show software revision

You can display the current software revision.



## Establishing a radio link

To establish a radio link between the transmitter and receiver, the same frequency must be set in both devices.

You can do this in a number of different ways:

1. Use the **Easy Setup** function to perform an **automatic frequency set-up** (see “Easy Setup menu item”).
2. Set a frequency in the receiver **manually** (see “Frequency Preset menu item”) and **synchronize** it with the transmitter (see “Synchronizing devices”).
3. Set the frequency on the receiver and the transmitter **manually** (EK 500 G4: “Frequency Preset menu item”, SKM 500 G4: “Frequency Preset menu item”, SKP 500 G4: “Frequency Preset menu item”, SKP 500 G4: “Frequency Preset menu item”)

### Setting notes

Please note the following when synchronizing a transmitter with a receiver:

- ▷ Only use transmitters and receivers from the same frequency range (see the type plate on the transmitter and receiver).
- ▷ Make sure that your chosen frequencies are listed in the frequency table for the particular frequency range (see “Frequency tables”).
- ▷ Ensure that the desired frequencies are permitted in your country and apply for an operating license if necessary.



**Please note the information at the following address:**

General conditions and restrictions for the use of frequencies

---



## Synchronizing devices

You can synchronize ew 500 P G4 series transmitters and receivers via the receiver's infrared interface.

You can adjust the **Parameters** to be transferred to the transmitter here: "Advanced -> Sync Settings menu item"

To synchronize the devices:

- ▷ Switch the transmitter and the receiver on.
- ▷ Call up the **Sync** menu item on the receiver.  
**Sync** appears in the receiver's display.
- ▷ Hold the infra-red interface of the transmitter in front of the infra-red interface of the receiver.

The parameters are transferred to the transmitter. When the transfer is complete, a tick appears in the receiver's display as a confirmation. Then the receiver will return to the current standard display.



To cancel synchronization:

- ▷ Press the **ON/OFF** button on the receiver.  
An **X** appears in the display.

This icon also appears when:

- no transmitter is found or the transmitter is not compatible.
- no transmitter is found and the synchronization process automatically ends after 30 seconds.





# SPECIFICATIONS

## Overview

In the sections below, you can find information about the different variants of the products in the **ew 500 P G4** series as well as technical data for the individual products.

- Product variants and frequency variants >> “Product variants”
- Frequency tables with overviews of all banks and channels >> “Frequency tables”
- Product-specific technical data >> “Specifications”
- Information on pin assignment (jack and XLR) >> “Pin assignment”

You can also find information about safely cleaning and maintaining **evolution wireless G4** series products.

- “Cleaning and maintenance”



## Product variants

### EK 500 G4 product variants

#### Made in Germany

EK 500 G4-K+	925 – 937.5 MHz	Art. no. 507822
EK 500 G4-GBw	606 – 678 MHz	Art. no. 507823
EK 500 G4-Gw	558 – 626 MHz	Art. no. 507824
EK 500 G4-Bw	626 – 698 MHz	Art. no. 507825
EK 500 G4-Cw	718 – 790 MHz	Art. no. 507826
EK 500 G4-Dw	790 – 865 MHz	Art. no. 507827
EK 500 G4-Aw+	470 – 558 MHz	Art. no. 508419

#### Assembled in the USA

EK 500 G4-AS	520 – 558 MHz	Art. no. 508161
EK 500 G4-JB	806 – 810 MHz	Art. no. 508162
EK 500 G4-Gw	558 – 626 MHz	Art. no. 508163
EK 500 G4-Bw	626 – 698 MHz	Art. no. 508164
EK 500 G4-Cw	718 – 790 MHz	Art. no. 508165
EK 500 G4-Dw	790 – 865 MHz	Art. no. 508166
EK 500 G4-Aw+	470 – 558 MHz	Art. no. 508440
EK 500 G4-Gw1	558 – 608 MHz	Art. no. 508461



## SKM 500 G4 product variants

### Made in Germany

SKM 500 G4-K+	925 – 937.5 MHz	Art. no. 507782
SKM 500 G4-GBw	606 – 678 MHz	Art. no. 507783
SKM 500 G4-Gw	558 – 626 MHz	Art. no. 507784
SKM 500 G4-Bw	626 – 698 MHz	Art. no. 507785
SKM 500 G4-Cw	718 – 790 MHz	Art. no. 507786
SKM 500 G4-Dw	790 – 865 MHz	Art. no. 507787
SKM 500 G4-Aw+	470 – 558 MHz	Art. no. 508414

### Assembled in the USA

SKM 500 G4-AS	520 – 558 MHz	Art. no. 508121
SKM 500 G4-JB	806 – 810 MHz	Art. no. 508122
SKM 500 G4-Gw	558 – 626 MHz	Art. no. 508123
SKM 500 G4-Bw	626 – 698 MHz	Art. no. 508124
SKM 500 G4-Cw	718 – 790 MHz	Art. no. 508125
SKM 500 G4-Dw	790 – 865 MHz	Art. no. 508126
SKM 500 G4-Aw+	470 – 558 MHz	Art. no. 508435
SKM 500 G4-Gw1	558 – 608 MHz	Art. no. 508459



## SK 500 G4 product variants

### Made in Germany

SK 500 G4-K+	925 – 937.5 MHz	Art. no. 507774
SK 500 G4-GBw	606 – 678 MHz	Art. no. 507775
SK 500 G4-Gw	558 – 626 MHz	Art. no. 507776
SK 500 G4-Bw	626 – 698 MHz	Art. no. 507777
SK 500 G4-Cw	718 – 790 MHz	Art. no. 507778
SK 500 G4-Dw	790 – 865 MHz	Art. no. 507779
SK 500 G4-Aw+	470 – 558 MHz	Art. no. 508413

### Assembled in the USA

SK 500 G4-AS	520 – 558 MHz	Art. no. 508113
SK 500 G4-JB	806 – 810 MHz	Art. no. 508114
SK 500 G4-Gw	558 – 626 MHz	Art. no. 508115
SK 500 G4-Bw	626 – 698 MHz	Art. no. 508116
SK 500 G4-Cw	718 – 790 MHz	Art. no. 508117
SK 500 G4-Dw	790 – 865 MHz	Art. no. 508118
SK 500 G4-Aw+	470 – 558 MHz	Art. no. 508434
SK 500 G4-Gw1	558 – 608 MHz	Art. no. 508455



## SKP 500 G4 product variants

### Made in Germany

SKP 500 G4-K+	925 – 937.5 MHz	Art. no. 507814
SKP 500 G4-GBw	606 – 678 MHz	Art. no. 507815
SKP 500 G4-Gw	558 – 626 MHz	Art. no. 507816
SKP 500 G4-Bw	626 – 698 MHz	Art. no. 507817
SKP 500 G4-Cw	718 – 790 MHz	Art. no. 507818
SKP 500 G4-Dw	790 – 865 MHz	Art. no. 507819
SKP 500 G4-Aw+	470 – 558 MHz	Art. no. 508418

### Assembled in the USA

SKP 500 G4-AS	520 – 558 MHz	Art. no. 508153
SKP 500 G4-JB	806 – 810 MHz	Art. no. 508154
SKP 500 G4-Gw	558 – 626 MHz	Art. no. 508155
SKP 500 G4-Bw	626 – 698 MHz	Art. no. 508156
SKP 500 G4-Cw	718 – 790 MHz	Art. no. 508157
SKP 500 G4-Dw	790 – 865 MHz	Art. no. 508158
SKP 500 G4-Aw+	470 – 558 MHz	Art. no. 508439
SKP 500 G4-Gw1	558 – 608 MHz	Art. no. 508460



## Frequency tables

You can find frequency tables for all available frequency ranges in the download section of the Sennheiser website under [www.sennheiser.com/download](http://www.sennheiser.com/download).

Download area of the Sennheiser website

Enter **ew G4** into the search bar to show the frequency tables.



## Specifications

You can find the product-specific technical data in the sections below.



## EK 500 G4

### RF characteristics

<b>Modulation</b>	Wideband FM
<b>Receiving frequency ranges</b>	Aw: 470 – 558 MHz AS: 520 – 558 MHz Gw1: 558 – 608 MHz Gw: 558 – 626 MHz GBw: 606 – 678 MHz Bw: 526 – 698 MHz Cw: 718 – 790 MHz Dw: 790 – 865 MHz JB: 806 – 810 MHz K+: 925 – 937.5 MHz
<b>Receiving frequencies</b>	Max. 2880 receiving frequencies, adjustable in 25 kHz steps  20 frequency banks, each with up to 32 factory-preset channels, no intermodulation  6 frequency banks with up to 32 programmable channels
<b>Switching bandwidth</b>	up to 88 MHz
<b>Nominal/peak deviation</b>	$\pm 24$ kHz / $\pm 48$ kHz
<b>Receiver principle</b>	Adaptive diversity
<b>Sensitivity (with HDX, peak deviation)</b>	$< 1.6 \mu\text{V}$ for 52 dBA <sub>eff S/N</sub>
<b>Adjacent channel selection</b>	$\geq 65$ dB
<b>Intermodulation attenuation</b>	$\geq 65$ dB
<b>Blocking</b>	$\geq 70$ dB
<b>Squelch</b>	Low: 5 dB $\mu\text{V}$ Middle: 15 dB $\mu\text{V}$ High: 25 dB $\mu\text{V}$
<b>Pilot tone squelch</b>	Can be switched off





### AF characteristics

<b>Compander system</b>	Sennheiser HDX
<b>Signal-to-noise ratio (1 mV, peak deviation)</b>	Line: $\geq 110$ dBA Phones: approx. 90 dBA
<b>Total harmonic distortion (THD)</b>	$\leq 0.9$ %
<b>AF output voltage (at peak deviation, 1 kHz AF)</b>	3.5 mm jack socket +17 dBu (mono, unbalanced)
<b>“AF Out” setting range</b>	42 dB in 6 dB steps

### Overall device

<b>Temperature range</b>	-10 °C to +55 °C (14 °F to 131 °F)
<b>Power supply</b>	2 AA batteries, 1,5 V or BA 2015 accupack
<b>Nominal voltage</b>	3 V battery / 2.4 V rechargeable battery
<b>Power consumption</b>	at nominal voltage: typically 180 mA  with transmitter switched off: $\leq 25$ $\mu$ A
<b>Operating time</b>	Typically 8 h
<b>Dimensions</b>	Approx. 82 x 64 x 24 mm
<b>Weight (with batteries)</b>	Approx. 130 g



## SKM 500 G4

### RF characteristics

<b>Modulation</b>	Wideband FM
<b>Receiving frequency ranges</b>	Aw+: 470 – 558 MHz AS: 520 – 558 MHz Gw1: 558 – 608 MHz Gw: 558 – 626 MHz GBw: 606 – 678 MHz Bw: 526 – 698 MHz Cw: 718 – 790 MHz Dw: 790 – 865 MHz JB: 806 – 810 MHz K+: 925 – 937.5 MHz
<b>Transmission frequencies</b>	Max 2880 receiving frequencies, adjustable in 25 kHz steps  20 frequency banks, each with up to 32 factory-preset channels, no intermodulation  6 frequency banks with up to 32 programmable channels
<b>Switching bandwidth</b>	up to 88 MHz
<b>Nominal/peak deviation</b>	$\pm 24$ kHz / $\pm 48$ kHz
<b>Frequency stability</b>	$\leq \pm 15$ ppm
<b>RF output power at 50 ?</b>	Switchable: Low: typically 10 mW Standard: typically 30 mW High: typically 50 mW
<b>Pilot tone squelch</b>	Can be switched off



### AF characteristics

<b>Compander system</b>	Sennheiser HDX
<b>AF frequency response</b>	80 – 18,000 Hz
<b>Signal-to-noise ratio (1 mV, peak deviation)</b>	≥ 115 dBA
<b>Total harmonic distortion (THD)</b>	≤ 0.9 %
<b>Setting range for input sensitivity</b>	48 dB in 6 dB steps

### Overall device

<b>Temperature range</b>	-10 °C to +55 °C (14 °F to 131 °F)
<b>Power supply</b>	2 AA batteries, 1,5 V or BA 2015 accupack
<b>Nominal voltage</b>	3 V battery / 2.4 V rechargeable battery
<b>Power consumption</b>	
<b>at nominal voltage with transmitter switched off</b>	typically 180 mA ≤ 25 µA
<b>Operating time</b>	Typically 8 h
<b>Dimensions</b>	Approx. Ø 50 x 265 mm
<b>Weight (with batteries)</b>	Approx. 450 g



## SK 500 G4

### RF characteristics

<b>Modulation</b>	Wideband FM
<b>Receiving frequency ranges</b>	Aw+: 470 – 558 MHz AS: 520 – 558 MHz Gw1: 558 – 608 MHz Gw: 558 – 626 MHz GBw: 606 – 678 MHz Bw: 526 – 698 MHz Cw: 718 – 790 MHz Dw: 790 – 865 MHz JB: 806 – 810 MHz K+: 925 – 937.5 MHz
<b>Transmission frequencies</b>	Max 2880 receiving frequencies, adjustable in 25 kHz steps  20 frequency banks, each with up to 32 factory-preset channels, no intermodulation  6 frequency banks with up to 32 programmable channels
<b>Switching bandwidth</b>	up to 88 MHz
<b>Nominal/peak deviation</b>	$\pm 24$ kHz / $\pm 48$ kHz
<b>Frequency stability</b>	$\leq \pm 15$ ppm
<b>RF output power at 50 ?</b>	Switchable: Low: typically 10 mW Standard: typically 30 mW High: typically 50 mW
<b>Pilot tone squelch</b>	Can be switched off



### AF characteristics

<b>Compander system</b>	Sennheiser HDX
<b>AF frequency response</b>	Microphone: 80 – 18,000 Hz Line: 25 – 18,000 Hz
<b>Signal-to-noise ratio (1 mV, peak deviation)</b>	≥ 115 dBA
<b>Total harmonic distortion (THD)</b>	≤ 0.9 %
<b>Max. input voltage Microphone/line</b>	3 V <sub>eff</sub>
<b>Input impedance Microphone/line</b>	40 kΩ, unbalanced/1 MΩ
<b>Input capacitance</b>	Switchable
<b>Setting range for input sensitivity</b>	60 dB in 3 dB steps

### Overall device

<b>Temperature range</b>	-10 °C to +55 °C (14 °F to 131 °F)
<b>Power supply</b>	2 AA batteries, 1,5 V or BA 2015 accupack
<b>Nominal voltage</b>	3 V battery 2.4 V rechargeable battery
<b>Power consumption</b>	
<b>at nominal voltage with transmitter switched off</b>	typically 180 mA ≤ 25 μA
<b>Operating time</b>	Typically 8 h
<b>Dimensions</b>	approx. 82 x 64 x 24 mm
<b>Weight (with batteries)</b>	Approx. 160 g



## SKP 500 G4

### RF characteristics

<b>Modulation</b>	Wideband FM
<b>Receiving frequency ranges</b>	Aw: 470 – 558 MHz AS: 520 – 558 MHz Gw1: 558 – 608 MHz Gw: 558 – 626 MHz GBw: 606 – 678 MHz Bw: 526 – 698 MHz Cw: 718 – 790 MHz Dw: 790 – 865 MHz JB: 806 – 810 MHz K+: 925 – 937.5 MHz
<b>Transmission frequencies</b>	Max. 2880 transmission frequencies, adjustable in 25 kHz steps  20 frequency banks, each with up to 32 factory-preset channels, no intermodulation  6 frequency banks with up to 32 programmable channels
<b>Switching bandwidth</b>	up to 88 MHz
<b>Nominal/peak deviation</b>	±24 kHz / ±48 kHz
<b>Frequency stability</b>	≤ ±15 ppm
<b>RF output power at 50 ?</b>	Switchable: Low: typically 10 mW Standard: typically 30 mW High: typically 50 mW
<b>Pilot tone squelch</b>	Can be switched off



### AF characteristics

<b>Compander system</b>	Sennheiser HDX
<b>AF frequency response</b>	80 – 18,000 Hz
<b>Signal-to-noise ratio (1 mV, peak deviation)</b>	≥ 120 dBA
<b>Total harmonic distortion (THD)</b>	≤ 0.9 %
<b>Input voltage</b>	6 V <sub>eff</sub>
<b>Input impedance</b>	68 kΩ, unbalanced
<b>Input capacitance</b>	Switchable
<b>Setting range for input sensitivity</b>	48 dB in 6 dB steps

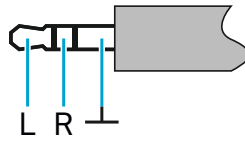
### Overall device

<b>Temperature range</b>	-10 °C to +55 °C (14 °F to 131 °F)
<b>Power supply</b>	2 AA batteries, 1,5 V or BA 2015 accupack
<b>Nominal voltage</b>	3 V battery / 2.4 V rechargeable battery
<b>Power consumption</b>	at nominal voltage: typically 180 mA  with transmitter switched off: ≤ 25 μA
<b>Operating time</b>	Typically 8 h
<b>Dimensions</b>	Approx. 105 x 43 x 43 mm
<b>Weight (with batteries)</b>	Approx. 195 g



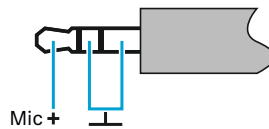
## Pin assignment

### 3.5 mm stereo jack plug



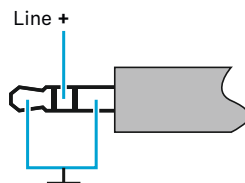
- Plug for headphone and earphone cables, e.g. IE 4.
- Connect to:
  - EK IEM G4
  - EK 500 G4

### 3.5 mm mic jack plug



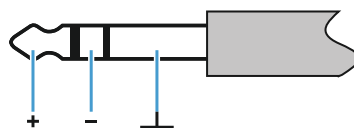
- Plug for lavalier and headset microphone, e.g. ME 2.
- Connect to:
  - SK 100 G4
  - SK 300 G4
  - SK 500 G4

### 3.5 mm line jack plug



- Plug for line and instrument cables, e.g. Ci 1-N
- Connect to:
  - SK 100 G4
  - SK 300 G4
  - SK 500 G4

### 6.3 mm stereo jack plug, balanced (audio in/loop out)

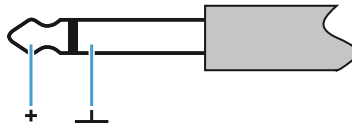


- Connect to:
  - SR IEM G4 Audio In
  - SR IEM G4 Loop Out



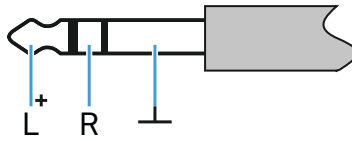


### 6.3 mm mono jack plug, unbalanced



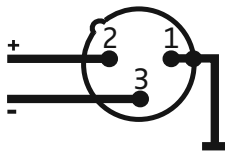
- Connect to:
  - EM 100 G4 Audio Out
  - EM 300-500 G4 Audio Out

### 6.3 mm stereo jack plug for headphone jack



- Connect to:
  - EM 100 G4 headphone input
  - EM 300-500 G4 headphone input
  - SR IEM G4 headphone input

### XLR-3 plug, balanced



### Hollow jack plug for power supply





## Cleaning and maintenance

Note the following information when cleaning and maintaining evolution wireless G4 series products.

---

### CAUTION

#### Liquids can damage the products' electronics.

Liquids entering the product housing can cause a short-circuit and damage the electronics.

- ▷ Keep all liquids away from the products.
  - ▷ Do not use any solvents or cleansing agents.
- 
- ▷ Disconnect the products from the power supply system and remove rechargeable batteries and batteries before you begin cleaning.
  - ▷ Clean all products only with a soft, dry cloth.
  - ▷ Note the special cleaning instructions below for the following products.

#### Cleaning the sound inlet basket of the microphone module

- ▷ Unscrew the top sound inlet basket from the microphone module by turning it counterclockwise.
- ▷ Remove the foam insert.



You can clean the sound inlet basket in two ways:

- ▷ Use a slightly damp cloth to clean the top sound inlet basket from the inside and outside.
- ▷ Use a brush and rinse with clean water.
- ▷ If necessary, clean the foam insert with a mild detergent or replace the foam insert.
- ▷ Dry the top sound inlet basket and foam insert.
- ▷ Reinsert the foam insert.



- ▷ Screw the sound inlet basket back onto the microphone module.

From time to time, you should also clean the microphone module contacts:

- ▷ Wipe the contacts of the microphone module with a soft, dry cloth.



# CONTACT

## Contact

### Instruction manual as a PDF

You can find this instruction manual as a PDF (German and English) in the download section of the Sennheiser website at **[www.sennheiser.com/download](http://www.sennheiser.com/download)**.

Download area for the Sennheiser website

- ▷ Enter **ew G4** into the search bar to show the instruction manuals for products in the ew G4 series.

### Customer service

If you have technical questions or experience problems with the product, you can access Sennheiser customer service at **[www.sennheiser.com/service-support](http://www.sennheiser.com/service-support)**.

Sennheiser customer service online area

### Feedback

Do you have any questions or suggestions about this instruction manual? Write to us at **[techcomm@sennheiser.com](mailto:techcomm@sennheiser.com)**.



**Sennheiser electronic GmbH & Co. KG**

Am Labor 1, 30900 Wedemark, Germany  
[www.sennheiser.com](http://www.sennheiser.com)