

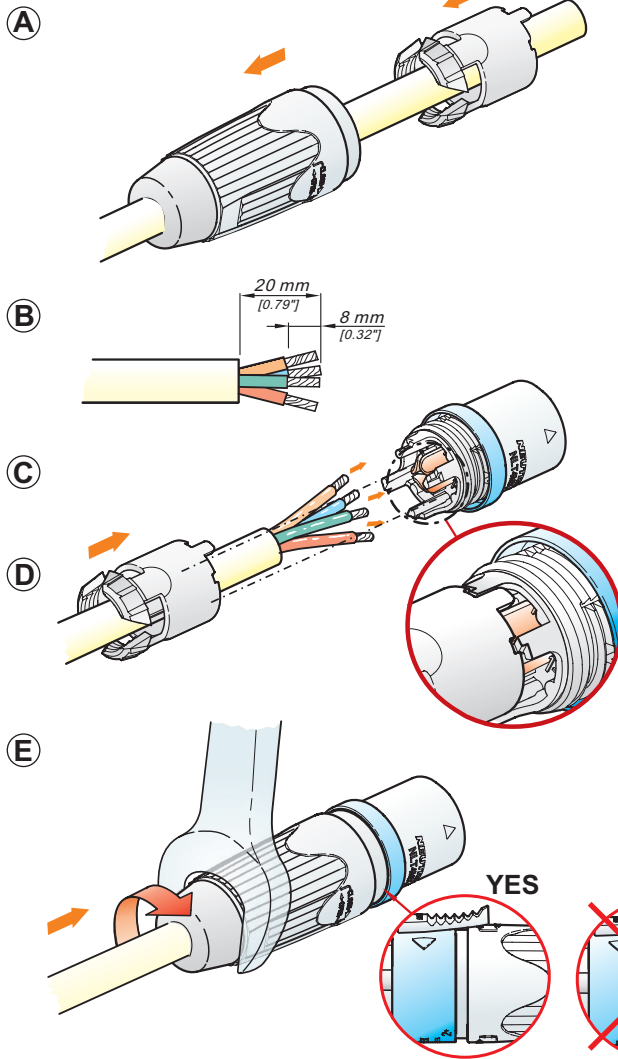
Lockable Loudspeaker Connector

Speakon® STX Series

New 4 pole Speakon® series with metal housing

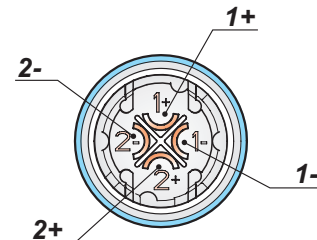
Assembly Instructions

Assembly of the Cable Connector:

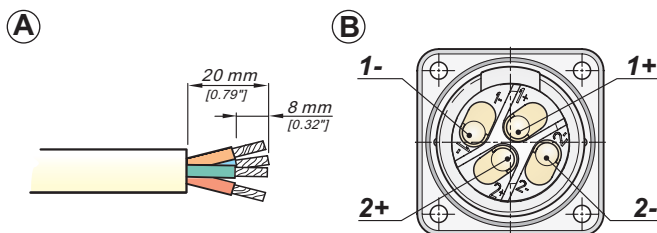


- (A) Place bushing and chuck over the cable.
- (B) Prepare cable as shown.
- (C) Solder the wire ends to contacts of insert.
- (D) Slide the chuck up the cable and align with the housing.
Important: Align the chuck by positioning the nose into the smaller recess.
- (E) Slide the bushing up the cable and tighten it (flat wrench SW 22mm).
Important: Bushing must be screwed onto housing minimum 3 turns thus there is no gap between housing and bushing.

Wiring:



Wiring of the Receptacle and the Female Cable Connector:



- (A) Prepare cable as shown.
- (B) Insert the wires into the terminals and solder it.

NEUTRIK AG
Liechtenstein
Tel.: +423/237 24 24
Fax: +423/232 53 93
www.neutrik.com

NEUTRIK Zürich AG
Switzerland
Tel.: +41 44/736 5010
Fax: +41 44/736 5011

NEUTRIK (UK) Ltd.
Great Britain
Tel.: +44 1983/811 441
Fax: +44 1983/811 439

NEUTRIK USA INC.
USA
Tel.: +1 732/901 9488
Fax: +1 732/901 9608

NEUTRIK Tokyo Ltd.
Japan
Tel.: +81 3/3663 4733
Fax: +81 3/3663 4796

NEUTRIK France
France
Tel.: +33 1/4131 6750
Fax: +33 1/4131 0511

NEUTRIK Vertriebs GmbH
Germany/Netherlands/Austria
Tel.: +49 8131/28 08 90
Fax: +49 8131/28 08-30

Draft. Nr.: BDA 118 / 3102M1181
Update: 20.06. 2005



NEUTRIK®
CONNECTING THE WORLD

Data subject to change without prior notice. ©2005 NEUTRIK®. ALL RIGHTS RESERVED.