

Technical Information

No. FO 4699

Edition: 02/02 - subject to change

Supersedes: Edition 09/01

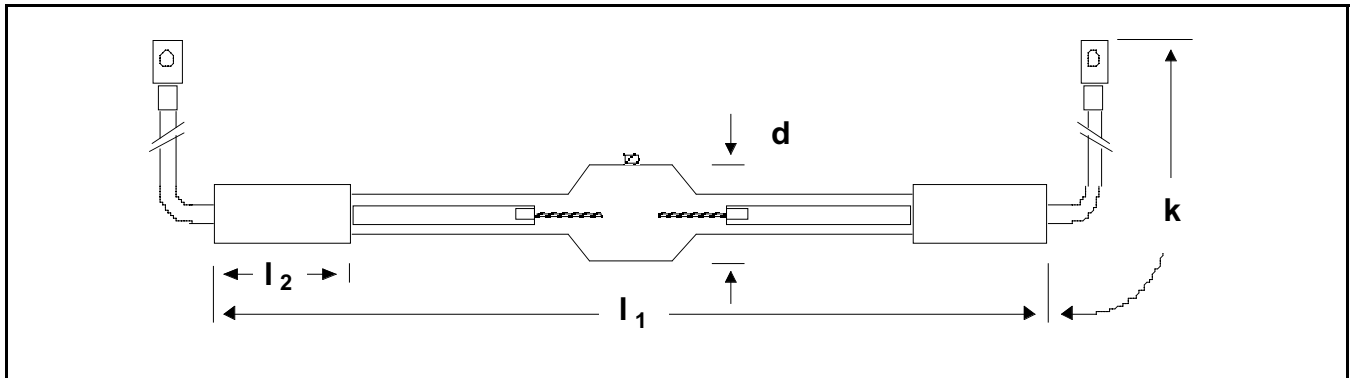
Status: valid

Metal Halide Lamp

HTI® 4000 W/DE

■ Product description

The OSRAM HTI® 4000W/DE is a double ended metal halide lamp of the high power stage in the HTI type range. The lamp is characterized by daylight-like spectrum, high luminous intensity and exceptional compact design. With 500 h the lamp show a high service life. The HTI® 4000W/DE is generally used in the disco and effect light field.



■ Technical data

lamp / order reference	HTI® 4000 W/DE			
Rated lamp wattage	W	4,000	Bulb diameter d	mm 40
Lamp voltage	V	115	Cable length k	mm 140
Ignition voltage (cold /	kV	9 / 50	Lamp length l ₁	mm max. 270
Lamp current (~)	A	40	Base length l ₂	mm 60
Luminous flux	lm	360,000	Average service life	h 500
Colour temperature	K	6,300	Base	S 25,5
Electrode gap (cold)	mm	15		

■ Lamp operation

Maximum base temperature allowed	°C	230	
Cooling	forced cooling		
Burning position	horizontal ± 30°, p30		

■ Manufacturers operating and control devices (not all officially approved by OSRAM)

The HTI® 4000W/DE can either be operated on standard ballasts as well as on electronic power supplies (ECG).

Further information on operating and control device requirements is available with the OSRAM brochure "Guidelines for Control Gear and Igniters - Metal Halide Lamps Photo Optic", order reference 123T01E.